

**NEW!** DIGITAL LIBRARY OF CATALOGS & LITERATURE *P.30*

May 2016  
**Rural  
Builder**<sup>®</sup>

The Business Management Magazine for Rural Contractors  
[www.ruralbuilder.com](http://www.ruralbuilder.com)

**PRODUCT  
PROFILE:**  
Nails & Screw  
**p. 12**

**BEST  
PRODUCTS  
AT THE  
EXPO  
P.10**

Starting at the top

# TRUSSES

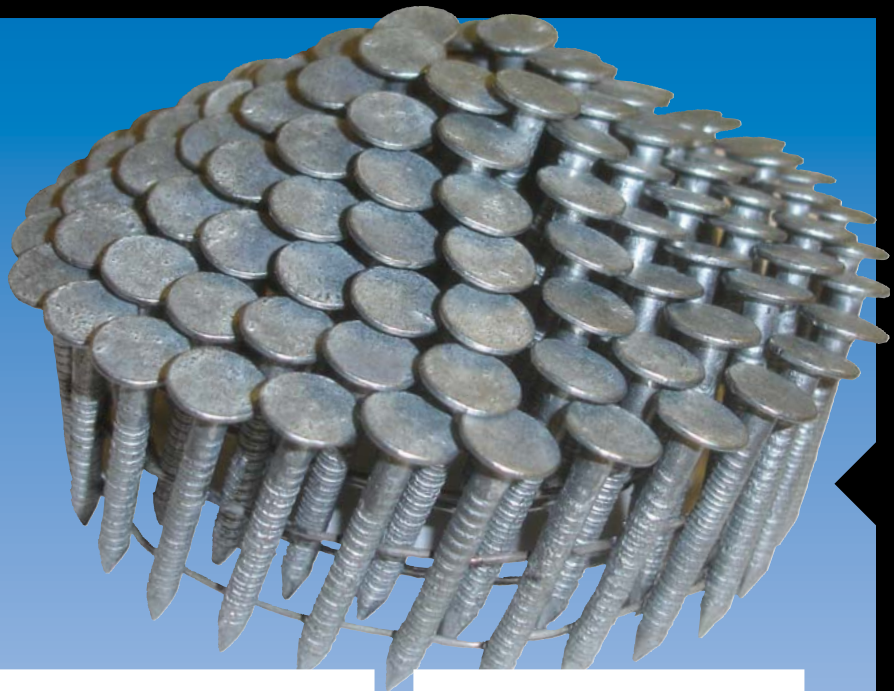
**a case for T-bracing**



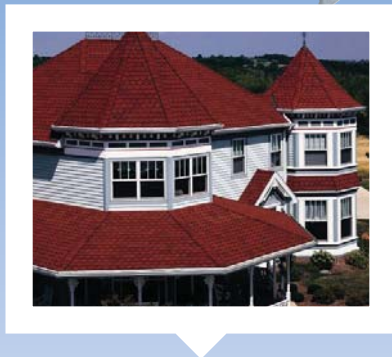
**PROJECT FEATURE:  
THE AVIATOR  
CABIN p.42**



**OUR** severe weather solution.



**MAZE** ring shank HDG roofing nails are Miami-Dade County Approved.



**MAZE** roofing nails are available in bulk for hand driving and coils for pneumatic tools.



**MAZE** roofing nails are 100% MADE IN THE USA.

**MAZE** roofing nails are available in double hot-dipped galvanized, stainless steel, copper and aluminum.

**MAZE** ring shank roofing nails provide more than twice the holding power of smooth shank nails.



**NAIL IT ONCE. NAIL IT RIGHT.®**

**1.800.435.5949 • mazenails.com**

**Helping to Build America Since 1848**

Miami-Dade County, Florida Notice of Acceptance (NOA)  
No: 11-0425.09 Expiration Date: 08/17/16

A Division of W.H. Maze Company

*Manufacturing 100% Made in the USA nails with pride, honor and tradition.*

Circle Reader Service #306

# Rural Builder

**Vice President/Group Publisher**  
Jamie Wilkinson

**Publisher/VP Advertising Sales**  
Dave Davel

**Editor**  
Sharon Thatcher  
sharon.thatcher@fwcommunity.com  
715-445-2214, ext. 13644

**Advertising Sales**  
Gary Reichert  
gary.reichert@fwcommunity.com  
715-445-2214, ext. 13381

Tyler Jenson  
tyler.jenson@fwcommunity.com  
715-445-2214, ext. 13322

**Publication Design**  
Nicole MacMartin

**Production Coordinators**  
Kathy Budsberg  
kathy.budsberg@fwcommunity.com  
715-445-2214, ext. 13309

Patti Kirchner  
patti.kirchner@fwcommunity.com  
715-445-2214, ext. 13319

**Subscription Services**  
386-246-3452

**Office Phone**  
715-445-2214

**Office Fax**  
715-445-4087

**F+W, A CONTENT + ECOMMERCE COMPANY**

**CEO** Thomas F.X. Beusse

**CFO/COO** James L. Ogle

**President** Sara Domville

**CDO** Chad Phelps

**SVP, Mfg. & Production** Phil Graham

**VP, Communications** Stacie Berger

## SUBSCRIPTION SERVICE

Subscription inquiries, orders and address changes can be made at [constructionmag-net.com](http://constructionmag-net.com) (click on "Subscribe"). Or by mail: Rural Builder, P.O. Box 421751, Palm Coast, FL 32142-1751. Or call (866)805-1574, International (386)246-3452

Rural Builder (ISSN: 0888-3025) Volume 50 Number 3 is published monthly, except January, April, June and November, by Krause Publications, a division of F+W Media, Inc., 700 E. State Street, Iola, WI 54990-0001. Periodical postage paid at Iola, Wis., and at additional mailing offices. Canadian Agreement Number: 40665675. POSTMASTER: send address changes to Rural Builder, Circulation Department, PO Box 420235, Palm Coast, FL 32142. Copyright 2014 by F+W. Rural Builder and its logo are registered trademarks. Other names and logos referred to or displayed in editorial or advertising content may be trademarked or copyright. Rural Builder assumes no responsibility for unsolicited materials sent to it. Publisher and advertisers are not liable for typographical errors that may appear in prices or descriptions in advertisements. Mailed free to rural contractors and their suppliers throughout North America. Others may subscribe: \$29.98 for 1 year, \$55.98 for 2 years, and \$79.98 for 3 years in the U.S.; \$39.98 for 1 year, \$74.98 for 2 years in Canada.



22

## FEATURES [MAY 2016]

### BEST PRODUCTS AT THE EXPO / 10

### PRODUCT PROFILE / 12

Nails & Screws

### IN FOCUS: STARTING AT THE TOP—TRUSSES

- A case for T-bracing / 22
- New truss products for old problems / 26
- Prefabricated roof trusses: They can make you or break you / 28

### CATALOG LIBRARY / 30

A digital library of product catalogs and literature

### PHOTO REVIEW OF THE 2016 EXPO / 36

### PROJECT FEATURES

- The aviator cabin / 42
- This project used foam for backfill / 48

[ON THE COVER] Photo provided by Wick Buildings.  
Design by Nicole MacMartin.

## DEPARTMENTS

Editor's Note.....	4
Market Pulse.....	4
Supplier News.....	6
People in the News.....	9
New Products.....	16
Index .....	34
Classifieds .....	49
Industry News .....	50
Calendar of Events.....	50

## JULY PREVIEW

- Are you charging enough for your work?
- 34<sup>th</sup> Annual Gold Key Awards

42



36



E-MAIL THE EDITOR AT  
sharon.thatcher@  
fwcommunity.com

Check our website at  
[www.ruralbuilder.com](http://www.ruralbuilder.com)

# Looking up

A good expo and strong trusses

## THE EXPO

It's an election year, and it's hard to turn around without hearing somebody spewing gloom and doom. But if it's a bellwether, then the 2017 Frame Building Expo was a good sign that the politicians and pundits are wrong and things are indeed looking up.

I always enjoy attending the Expo and this year's event was my favorite yet. I attended my first in Indianapolis in 2011, and the economy was still rocking its way out of a recession, taking with it the general mood of the show.

But this year, back in Indianapolis, it was decidedly different. While rural builders are a cautious bunch in general, there was optimism in the air.

I spent a fair amount of time behind a camera and offer a photographic review of the show starting on Page 36.

As well, check out the voting results for Best Products of the Expo on Page 10. Products were on display during the Expo, with a ballot box available for visitors to cast their votes.

Next year the Expo heads to Nashville for its 50th anniversary.

For more photos of the 2016 Expo visit our website ([rural-builder.com](http://rural-builder.com)) and visit us on our Facebook page (Construction Magazine Network).

## TRUSSES

Only coincidentally, this issue also looks up at one of the most important elements of a building: the truss system. Build it wrong, and the building won't hold up.

Rural builders spend a lot of time looking up into those systems, working to make them strong. In my interview with truss engineer Dave Brakeman, he noted that experienced post-frame builders are pretty smart when it comes to building trusses, but newcomers to the trade, and even builders with experience in small buildings or homes don't always make the proper transition when working with large span trusses. When problems do arise, it is generally a result of this inexperience.

One topic Brakeman feels would benefit all builders is T-bracing. He explains the system and why it's worth considering on Page 22, before a more technical explanation is provided by the Structural Building Components Association.

Remember, build safe, build strong. **RB**



Sharon Thatcher,  
editor  
[sharon.thatcher@fwcommunity.com](mailto:sharon.thatcher@fwcommunity.com)  
800-726-9966, ext. 13644

# MARKET PULSE

## JOB GROWTH NUMBERS

The U.S. construction industry added 37,000 net new jobs in March according to an analysis of U.S. Bureau of Labor Statistics by Associated Builders and Contractors (ABC). On a year-over-year basis, construction employment expanded by 301,000 net new jobs, the industry's largest annual increase since May 2015. The industry added 20,000 net new jobs in February (revised upward from 19,000) and 18,000 net new jobs in January.

## CONSTRUCTION LEADING GROWTH

"The headline job growth number tells us that construction remains one of the U.S. economy's leading economic drivers," said Associated Builders and Contractor's Chief Economist Anirban Basu. "While the broader economic recovery remains in place, construction accounts for a disproportionate share of that recovery. Many other aspects of the recovery remain at least somewhat unsatisfying, including surprisingly soft wage growth, weak corporate profits and sluggishness in business investment. However, demand for labor remains high, including in a number of key nonresidential construction segments."

## REGIONAL, STATE CONSTRUCTION EMPLOYMENT

The National Association of Home Builders's analysis of February regional employment data shows that states with the highest annual growth rates of total construction employment include Hawaii (19.09 percent); Rhode Island (14.63 percent); Massachusetts (10.97 percent); New Hampshire (10.17 percent) and Tennessee (8.80 percent). The largest construction job losses were recorded by the energy producing states, which are deeply affected by the plunging oil prices, such as North Dakota, Alaska and Wyoming.

## FANNIE MAE HOMESTYLE ENERGY MORTGAGE

Fannie Mae is introducing a new HomeStyle Energy mortgage, an enhanced option for borrowers who want to finance energy efficiency improvements to their home.

Borrowers with an existing, higher-interest energy improvement loan can more easily roll that loan into a new mortgage or into a refinance of an existing mortgage. Borrowers will also have options to finance new energy upgrades when purchasing or refinancing a home. The HomeStyle Energy mortgage can be used on 1-4 unit properties, including condominium units, and is available for all approved Fannie Mae lenders.

# DYNAMIC FASTENER

*Everything for the Metal Builder & Roofer™*



**FREE 132 Page Full Color Tool & Fastener Hand Guide** provides prices, engineering data & details product offering.

**DYNAMIC FASTENER** is specifically geared to handle the needs of the Rural Building Contractor. We provide in-house custom color painting of screws and rivets with just a one or two day (days, *NOT* weeks) lead time. **TENS OF THOUSANDS** of power tools are stocked and sold at the lowest prices. Highest quality, top name brand fasteners are stocked and sold at the lowest prices. Same day shipment on orders received by 4:00 p.m. CST. We are a supplier to the largest metal building manufacturers.

We want to be **YOUR** source for screws, anchors, flashings, **DYNA-GUARD™** snow retention system, safety equipment, hand tools, power tools and accessories.

**7 warehouses to serve your construction needs for tools and fasteners**

(MAIN OFFICE)  
Kansas City • Chicago • Houston • Las Vegas • Memphis • St. Louis • St. Paul

**CALL 800-821-5448 or FAX 800-844-1199**

Call for your Free Full Color 132 Pg. Hand Guide. Better yet, call us for your next tool or fastener requirement. Discover for yourself why your peers enjoy doing business with our company!



## ■ VALSPAR TO BE ACQUIRED BY SHERWIN-WILLIAMS

In late March, the Sherwin-Williams Co. said it has agreed to acquire Valspar Corp. for about \$11.3 billion, or \$113 per share, in an all-cash transaction.

The transaction has been unanimously approved by the boards of directors of both companies.

Because the two companies have complementary paints and coatings offerings, the combination is expected to enhance Sherwin-Williams' global paints and coatings business.

According to a joint news release, Sherwin-Williams and Valspar expect the transaction to close by the end of the first quarter of 2017, subject to the approval of Valspar shareholders and customary closing conditions.

The sale would give Sherwin-Williams the ability to expand its retail paint brands to new markets inside and outside of the U.S., but as well it would allow the company to enter new areas such as steel coil coating, a market covered by Valspar's coil and extrusion division. Some of Valspar's coil coating products for the construction industry include WeatherXL and Fluropon.

**For product information Circle 101.**

## ■ DYNAMIC FASTENER RELEASES LATEST TOOL AND FASTENER HAND GUIDE



Dynamic Fastener just released the newest version of its popular *Tool and Fastener Hand Guide*. This one-of-a-kind *Guide* provides many answers to common and uncommon issues that arise in the frame-building and metal-building industries.

The free 132-page full color publication provides clear and concise answers to questions pertaining to fastener applications, engineering data, available types, size ranges and fastener materials.

In addition to discussing screws and anchors, the *Hand Guide* provides prices and other useful information relating to: flashings, sealants, insulation tapes, safety equipment, hand tools, power tools and more.

The 2016 publication also includes the new Dyna-Guard snow retention system for metal roofs. Dyna-Clamps are also available to accommodate many different profiles of standing seam roofs.

**For product information Circle 102.**

## ■ GREEN SPAN PROFILES RECEIVES APPROVALS FOR USE IN HIGH-WIND AREAS

Green Span Profiles has received FM 4881 Approval for its insulated panels installed using a new fastening pattern at several support spacings.

The approval comes following tests that models the dynamic wind event of a hurricane.

Green Span Profiles' entire line of insulated wall panels earned approval, including Infinity, Stucco, Impression, MesaLine, VeeLine, WaveLine and ShadowLine. It covers all Green Span panels of all widths, gauges and thicknesses. The spans covered by the approval are from 9 feet to 3 feet, and all spans in between.

Also recently, Green Span received Dade County Approval for its IWP Series of composite wall panels. Its IWP Series insulated steel wall panels successfully passed tests that allow for their installation in High Velocity Hurricane Zones.

**For product information Circle 103.**

## ■ BECKERS GROUP OPENS NEW PRODUCTION SITE IN MEXICO

Beckers Group officially opened a new production site in Monterrey, Mexico on April 6. Beckers' expects it to enhance its' operations and development of industrial coatings for Latin American markets.

In making the announcement, Beckers Group CEO Boris Gorella said: "Our new plant enables us to ramp up our activities in this region and meet the demands of the industrial coating industry. This investment clearly demonstrates our commitment to Beckers Group customers in the region."

**For product information Circle 104.**

## ■ VARCO PRUDEN PRESENTS ITS HALL OF FAME AWARDS

A total of 58 projects in 16 different building categories are included in this year's Varco Pruden Hall of Fame Awards. The annual competition recognizes top projects by VP builders that display innovation and excellence through the integration of VP building systems, products, architectural appearance, end use and design. The winner names can be accessed on the company's website at vp.com under News and Events.

**For product information Circle 105.**



## ***DOORS DONE RIGHT. DOORS THAT WORK!***

PHONE: 815-945-3667 • FAX: 815-945-7073 • WWW.IBEAMDOOR.COM  
960 E. CEMETERY AVE. CHENOA, IL 61726

**Heavy duty durability for contractor & consumer peace of mind**



- Door kits are delivered to your desired location with all the hardware and frames pre-cut, pre-punched for ease of installation
- Doors are constructed of lightweight aluminum I-beams that are designed for openings up to 48' wide by 20' high
- Heavy duty military grade latches and high strength steel brackets and hardware are all included with door kits
- 15 year 90mph wind warranty; when you see it you will believe it; unlike any door out there
- Ultra Glide track is one piece of extruded aluminum with a 4,000 lbs. capacity and Ultra Glide trolleys have a weight capacity of 6,000 lbs.



## ■ REDESIGNED PETERSEN CATALOG FEATURES FIVE NEW PAC-CLAD PRODUCTS

Petersen Aluminum has redesigned its corporate catalog to include five new products in the PAC-CLAD lineup. The updated catalog includes new enhanced features and two new sections that highlight Petersen's perforated metal capabilities, plus its collection of coping and fascia systems.

The new catalog is available for viewing or downloading in the products section of [pac-clad.com](http://pac-clad.com). **For product information Circle 106.**

## ■ FIRST CROSS LAMINATED TIMBER HOTEL IN THE U.S. COMPLETE

The first hotel in the U.S. to be completely constructed using Cross Laminated Timber (CLT) is complete. The four-story Candlewood Suites on Redstone Arsenal, Alabama, is owned by Lend Lease, the developer, design-builder and asset manager for the project, and the exclusive developer for the Department of Defense's only lodging privatization program.

The 62,688 square foot structure includes 92 guest rooms, and utilized 1,200 CLT wall panels and 200,000 CLT fasteners. It took the 11-man Lendlease crew 10 working weeks to erect the building, which is a 40 percent reduction in crew size and man hours, and 37 percent faster than conventional framing materials and methods.

Lendlease has pioneered the use of CLT in Australia and the UK.

## milestones

### ► MFM BUILDING PRODUCTS CELEBRATES 55<sup>TH</sup> ANNIVERSARY

MFM Building Products is celebrating the company's 55<sup>th</sup> anniversary.

MFM Building Products was founded in 1961 by Robert E. Simpson. Initially, the company manufactured products used for wrapping underground pipe to protect from water penetration and pipe contents from becoming contaminated. MFM expanded this technology to develop sealing and waterproofing products for use within the general construction industry.

Today, MFM manufactures a full envelope of waterproofing and weather barrier products for the building industry. Its products are manufactured in the U.S. and sold through an extensive distributor network around the globe. **RB**

IS YOUR COMPANY CELEBRATING AN ANNIVERSARY 50 YEARS OR MORE?  
LET US KNOW ABOUT IT. CONTACT [SHARON.THATCHER@FWCOMMUNITY.COM](mailto:SHARON.THATCHER@FWCOMMUNITY.COM).



# People in the news

## VARCO PRUDEN BUILDINGS

announces that Bill Smock has been named District Manager for VP's Central Region. In this role, Smock will be responsible for managing, maintaining and growing the builder sales market in the Iowa and Illinois market.

Smock will be based in Aledo, Ill. and will report directly to Ross Braithwait, vice president of sales and marketing.



Smock has more than 10 years of industry experience, including eight years in field sales.

◀ Bill Smock

## EPDM COATINGS

has announced a new addition, Jim Ashbrook, to its sales team. He will be responsible for developing the company's sales within the company's commercial/property division. Ashbrook brings to EPDM Coatings more than 30 years of strategic sales management, account management and field support experience in a variety of industries.



## LEVI'S BUILDING COMPONENTS

announces the hiring of Glenndon Forsythe as Production/Operations Manager. As a new addition to the Levi's Building Components team, Forsythe brings over 14 years of manufacturing and leadership experience gained from working at Morton Buildings, Gettysburg and Shetron Manufacturing, Shippensburg, Pennsylvania.

# Build with Confidence Build with Wick Buildings

Wick Buildings has been helping farmers, families and businesses by providing long-lasting, low-maintenance buildings since 1954.

Buildings with quality and value...and no compromises. Join our team!

800-356-9682  
WickBuildings.com



Agriculture ■ Suburban ■ Equestrian ■ Commercial



Circle Reader Service #511

THE  
**BEST**  
PRODUCT  
OF THE

**2016 FRAME BUILDING EXPO**

Each year at the Frame Building Expo there is a special product area designated to showcase products from exhibitors. Visitors are then given an opportunity to vote for their favorite products.

For the second year in a row, the #1 choice among voters attending the Expo in Indianapolis was Novaflex from Novagard!

Other products making it into the top 5 were: the new Eclipse Roof System by Lester Building Systems; the T17 Wood-X from Lakeside Construction Fasteners; Master Grippers MDP from Leland Manufacturing; and the new Design-It! 3D program from Wick Buildings.

**1** **Novaflex**  
Circle 111

Novaflex metal roof sealant is one of the premier silicone sealants around, with its excellent adhesion to all metal types including Kynar, and its permanent flexibility. Novaflex extrudes down to -20°F and up to 120°F. It is tack free in 10-15 minutes. The seal stays flexible for years with minimal shrinkage, so there is no sagging, slumping or cracking.



**2** **Eclipse Roof System**  
Circle 112

Customers can now benefit from a roof system that combines the structural integrity and ease of installation of a through-fastened roof with the sleek appearance and leak-free performance of a standing seam roof. At a fraction of the price, the new 36-inch wide Eclipse panel, introduced by Lester Building Systems at the Expo, installs quicker and easier than the typical standing seam panel, requiring one-third to one-half the number of panels and fewer screws. Importantly, the 26-gauge Eclipse panel can be installed over open purlins. No roof deck is required.





3

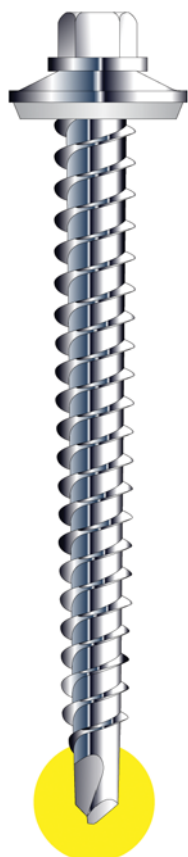
**T17 Wood-X**  
Circle 113

Lakeside Construction Fasteners is a full-service international manufacturing and distribution company offering a multitude of fastener solutions for the metal building industry. It was the T17 Wood-X that captured attention at the Expo. The #10 x 1- to 4-inch is designed for decking substrate materials including hardwoods. Its high-low threads and sharp-cut point allows the fastener to quickly penetrate the metal panel. With a quality focus, the T17 Wood-X can be used with battery-operated screw guns, including impact screw guns.

4

**Master Grippers MDP**  
Circle 114

Master Grippers MDP (Mini Drill Points) from Leland Industries is the original Mini Drill designed to drill and tap high tensile steel. Mini Drill Points eliminate dimpled panels and won't fracture fiberglass or PVC and the Master Grippers is capable of drilling up to 16 gauge steel. It's ideal for attaching to wood framing or light gauge steel: one fastener for two applications. Available to 4-inch lengths in hex washer or truss head styles, it can be powder coated to match panels, and comes with Leland's powder coating warranty to match your panel warranty.



5

**DESIGN-IT! 3D**  
Circle 115

With the Design-It! 3D web application, offered by Wick Buildings, a customer can see their building before they actually build it. They just go to WickBuildings.com and click on the Design-It! 3D graphic and they will be designing their own post-frame building in minutes. They can save it when they're done and share it with friends, family, business associates and their local Wick Builder.



**NEWS** &  
**SPECIAL FEATURES**  
[www.RuralBuilder.com](http://www.RuralBuilder.com)

# LAKE SIDE

CONSTRUCTION FASTENERS

## T17 WOOD-X

MIAMI DADE COUNTY  
APPROVED  
NOA#15-0423.02

**Bigger and Longer!**

10 x 1 - 10 x 4 in stock!

## T17 MASTERGRIP

Engineered Head Design for High Shear Environments!

## SD3 STEEL-X

- Innovative HEX Head Design!
- With and Without Washers
- Available Stock Sizes: 3/4" through 2-1/2"

## SV3 PROFILE CLOSURE

WEATHER RESISTANT BARRIER!

Contour Cut For Exact Panel Match!

## SC110 VENT

Your Complete Ridge Venting Solution!

- Dade County (HWHZ) 110 MPH Approved!
- Florida Building Code Approved! (FL # 4640-R1)

## Providing Alternative Fastener and Foam Solutions!™

To purchase contact us at:  
6476 Highway 135 North  
Paragould, AR 72450  
870-586-0703 (office)  
870-586-0643 (fax)  
800-537-4160 (toll free)  
www.lakeside-fasteners.com

Circle Reader Service #469

## product profile

BY RURAL BUILDER STAFF

# NAILS AND SCREWS

The basic necessities for a well-pointed fit



### 1. LELAND INDUSTRIES / CIRCLE 125

One Steppers, thermal expansion fasteners are designed to attach fiberglass or PVC panels to wood frame substrates. The revolutionary design self drills an expansion hole, allowing the panels to float, preventing cracking caused by expansion and contraction. The unique wings located on the shank, ream the drilled hole allowing the panel to move. One Steppers are available to handle panel thicknesses to .750 thick. Hex washer or pancake-head designs are available in carbon steel or stainless material.

### 2. DYNAMIC FASTENER / CIRCLE 126

Dynamic's DF Brand self-drilling screws are used for stitching and sheet-to-structural applications. Clip screws require a low clearance head when fastening to steel or wood. The D.F. Fenderhead line includes the #14 self-drilling T-5 fastener. Available at 1-1/2 to 8 inches long, the T-5 will fasten steel to structural steel from .250 to .625 inches total steel thickness. The 3/8-inch HWH also comes with a large 5/8-inch O.D. washer face. Fasteners are available in stainless steel and with the Dyna-Coat 1,000 hour salt spray premium coating.

### 3. FASCO AMERICA / CIRCLE 127

FASCO America offers a full range of Jumbo Nails and two Italian-designed FASCO Brand tool models by the Beck Fastener Group. These tools have a side handle for extra support while driving the Jumbo Nails. Jumbo Nails are available in 4 inch to 6-3/8 inch lengths and can be ordered in many different finishes, shank deformations, points, and collations to meet your exact needs.



**5. EAST COAST FASTENERS / CIRCLE 129**

East Coast Fasteners produces durable, long-lasting fasteners for all combinations of building materials. For fastening wood, aluminum, steel or any variety of applications East Coast's fastener line is manufactured to superior quality standards to guarantee optimal performance. With a variety of coatings to assure the builder has the best product on the market and the fastest cutting tips, East Coast fasteners are manufactured to standards that assure fast and reliable installation every time. East Coast Fasteners provides the strongest and most effective fasteners for your construction needs. For assistance in finding the best fastener, contact a Plyco/East Coast Fasteners building component professional.

**4. ATLAS BOLT & SCREW / CIRCLE 128**

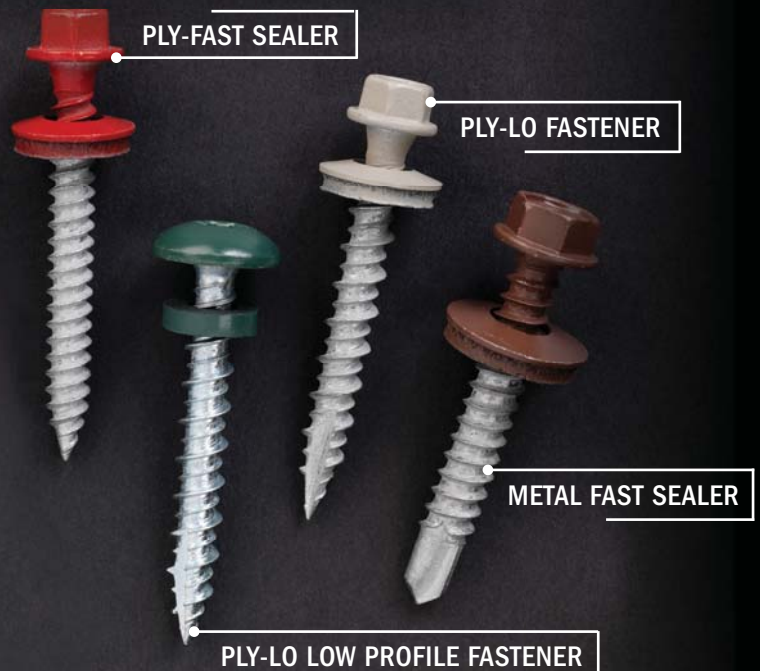
The Atlas #10 WoodTite HLX Atlas High-Low Fastener is engineered with a Type 17 point to penetrate the metal panel quickly. The Atlas HLX features specialized hybrid Aster threads that reduce pig-tails along with drive torque in hardwoods and knots. The high-major with low-minor threads assures faster drill times.

**6. LAKESIDE FASTENERS / CIRCLE 130**

Lakeside Construction Fasteners offers fastener solutions for the standing seam metal roof industry. The Pro ClipLok fastener line is available in a pancake, wafer or button head design. Pro ClipLok #10 x 1- to 2-inch is specifically designed for decking substrate materials including hardwoods with standing seam clips in mind. The Pro ClipLok family is available in self-drillers or self-tappers and are offered with #2 Square Drive, #2 Square Combo Drive, and #2 Phillips internal drive systems. They can be bagged in 100 piece or 250 piece bags. Drivers are included in each fastener carton.

“Still Making a **WORLD OF DIFFERENCE**”

- Colors to match any Rollformed Steel
- Hundreds of Closure Styles & Angle Cuts
- Dozens of Sales Professionals
- Factory Delivery Fleet & Fast Delivery
- High Quality Products for any Application



## product profile

BY RURAL BUILDER STAFF



7

### 7. ROSKO FASTENERS & SUPPLY INC. / CIRCLE 131

Rosko products range from metal-to-metal and metal-to-wood fasteners, including its Woody and Super Woody, which feature some of the strongest points in the industry today. Also, its self-drillers are being specified by various metal building manufacturers around the country. All of its painted fasteners are hand-racked prior to painting to guarantee that you have 100-percent usable parts on delivery.



10

### 10. SFS INTEC INC. / CIRCLE 134

SFS intec is a premier manufacturer of metal panel attachment fasteners for the metal building and post-frame markets. Fasteners include #9 woodGrips, #10 HiLo woodGrip with mill point and the #12 woodGrip XG with a large aggressive thread design for superior performance in OSB and plywood. Long-life fasteners include the everGrip bi-metal, woodZAC alloy cap and woodMAC SS capped fasteners. SFS intec is also now a distributor for S-5! clamps, brackets and snow retention products. Other accessories include panel clips, ProfileVent ridge ventilation, pipe flashing and WG-7 foam closure.

### 8. TFC / CIRCLE 132

Triangle Fastener Corporation is a leading commercial construction supplier of specialty fasteners, tools, sealants and accessories. Fastening systems for metal-to-metal, metal-to-wood, drywall and concrete applications are available. With 23 convenient locations and nine in-house painting facilities, TFC also provides expert job site support, technical assistance and inventory management programs.

### 9. IDEAL BUILDING FASTENERS / CIRCLE 133

Ideal Building Fasteners is a major supplier/manufacturer of fasteners for the metal construction and post-frame industries. The Dual Grip line of post-frame screws meets or exceeds the specifications of 99 percent of all building projects. Also stocked is a complete line of other fastener types, closure strips, butyl caulk tapes and pipe sealers. Other products available, including their physical and performance characteristics, are available online.



We don't need a fancy color ad to show you another picture of a fastener.



Rosko Fasteners & Supply is here in Black and White to let you know our 20 year history of **exceptional Customer Service & Quality Control** are what make us stand above the rest. But don't take our word for it.

**Read feedback from our customers:**

"Since 1993, Rosko Fasteners has always fulfilled our orders in a timely and cost efficient manner; we would not even consider another vendor. If you need quality with integrity, call the Rosko boys." - John A.

"Rosko Fasteners consistent attention to quality and on-time delivery keeps our business coming back to their products. In 15 years of doing business together, Rosko Fasteners has never failed to meet our expectations. Rosko Fasteners provides quality products with exceptional customer service." - Chris A.

"I've purchased from Rosko for 14 years. I keep coming back because they appreciate my business, they are family owned, they provide prompt service, and they have great customer service. Rosko provides excellent material and is a grade A company!" - Tom C.

**Rosko Fasteners & Supply, Inc.**  
(800) 404-6654  
roskofasteners.com

Okay, we can't help ourselves. One picture of our Super Duty Woody™



If you would like to see our catalog scan this QR Code or visit our website!



Circle Reader Service #449



**11**

**11. MAZE NAILS / CIRCLE 135**

Maze is the exclusive manufacturer of Stormguard double hot-dipped galvanized nails with a lifetime warranty against rust. In business since 1848, Maze offers a full line of specialty nails in bulk for hand driving and in collated sticks and coils for popular pneumatic nailers. Maze has been serving the post-frame industry for many years, providing painted rubber washer nails for corrugated roofing and siding. Maze post-frame nails meet the all-important ASTM F 1667 specification. In addition, Maze manufactures nails for fiber cement siding products, cedar and redwood sidings, fencing, decking and roofing. Maze Nails are proudly made in the USA in Peru, Illinois.

**12. LEVI'S BUILDING COMPONENTS / CIRCLE 136**



Levi's offers a variety of fasteners to suit every building need. Fastgrip handles metal-to-wood jobs and is a contractor favorite. It is sharper, has an easy drill-cut point and the paint color stays on during installation. Choose from 40-plus quick-ship colors or color match. The Fastgrip SS (stainless steel) line has a 50-year warranty. Levi's product offerings include a full line of fasteners: ProCap, ProZ, ProZSD, pancake head, replacement and Metalgrip screws.



**13**

**13. SEALITE BUILDING FASTENERS / CIRCLE 137**

Sealite supplies steel-frame and post-frame screws for agricultural, commercial, industrial and residential metal roof applications. Product strengths are drill quality and corrosion >>>

# FASTENERS TOOLS SEALANTS ACCESSORIES



**TFC**  
TRIANGLE FASTENER CORPORATION  
800.486.1832

Serving you since 1977, in 23 Locations Nationwide

Check out our new website for the most up-to-date products!  
[WWW.TRIANGLEFASTENER.COM](http://WWW.TRIANGLEFASTENER.COM)



Circle Reader Service #425

## product profile

BY RURAL BUILDER STAFF

>>>> resistance, as showcased on the Maxx SteelBinder and, new in 2016, the KwikSeal WoodBinder with micro-bit drill point. This new point is more consistent than the sharp-point Type 17 design and will drill multiple thickness of steel, while eliminating the metal “pigtailed” that can embed themselves in the rubber washer. All sharp-point screws will transition to this new point, including the ZXL WoodBinder zinc-aluminum alloy molded head and the WoodBinder HSS full hard stainless steel, both which carry 40-year warranties against red rust. Solid and vented foam closure strips, rubber pipe flashings, pancake and wafer head screws for standing seam roofs round out the product line.

## new products

BY RURAL BUILDER STAFF

### NEXT GENERATION FASTBACK FLIP UTILITY KNIFE



Milwaukee Tool's Fastback utility knife series has just been redesigned for better storage and quicker blade changes.

Recently introduced is the next generation Fastback Flip, as well as a smaller, more compact version called the Fastback Compact Flip.

Similar to the original Fastback and Fastback II, the new Fastback Flip allows users to fit an entire 5-pack of blades in their tool, all while maintaining the same thickness of the Fastback II. It also incorporates a 45-degree cut position, designed to make easier pull cuts. The Fastback Flip also includes an integrated gut hook, wire form clip, and wire stripper to improve overall productivity.

For users who prefer a smaller-sized knife, the Compact Fastback was designed to easily fit in the pocket. And, while many other small knives on the market require special blades, the Compact Fastback uses a standard size utility blade.

► For more information circle 140.

# Is Your Catalog Available Online? Is Your Catalog In Our Library?

Rural Builder, Metal Roofing and Frame Building News are combining resources to create a CATALOG LIBRARY for our readers.

**Rural  
Builder**

**METAL  
ROOFING  
MAGAZINE**

**FRAME  
BUILDING  
NEWS**



For the first time, Rural Builder, Metal Roofing, Frame Building News, Roofer Express and Builder Express subscribers can find advertisers' catalogs and products literature in one place, online 365 days per year.



**Contact us today for more details**

Gary Reichert • 715-350-7080 • gary.reichert@fwcommunity.com  
Tyler Jenson • 715-318-4505 • tyler.jenson@fwcommunity.com

## new products

BY RURAL BUILDER STAFF



### DYNAMIC FASTENER

Dyna-Guard is a snow retention system designed to be used on metal roofs. This system can be easily installed on a new construction project or retrofitted to an existing metal roof. During installation, first, either clamps or brackets are attached to the metal roof. Dynamic stocks a variety of Dyna-Clamps to accommodate many different profiles of standing seam.



Once the clamps or brackets are attached to the metal roof then the Dyna-Guard is bolted to those attachment devices. Dyna-Guard is an 8-foot long extruded aluminum stick with a T-shape profile. Simply insert a 2-inch wide painted strip of metal from the same material as the roof to maximize roofline aesthetics and to provide year round protection from devastating snow and ice avalanches.

► For more information circle 141.



### NEW PNEUMATIC CONSTRUCTION NAILERS

DeWalt is bringing several new construction nailers to market. It includes the 21° Plastic Collated Frammer, 30° Paper Collated Frammer, 28° Wire Weld Frammer, 15° Coil Frammer and Coil Roofing Nailers.

With new engines designed to minimize recoil, these durable new nailers are optimal for a wide variety of framing, sheathing and roofing applications.

DeWalt's new construction nailers come standard with a 7-year limited warranty, 90-day money-back guarantee, and 1-year free service contract.

► For more information circle 142.

### FASCO® - AIR DRIVEN TOOLS

- The latest in pneumatic fastening technology
- Distinctive style, ergonomic design, superior dependability
- Fine-tuned Italian craftsmanship
- Over 100 tool models

Master Distributor  
**FASCO**  
AMERICA

Get professionally connected  
by visiting  
[www.fascoamerica.com](http://www.fascoamerica.com)  
or call 800-239-8665.

BECK Fastener Group®, FASCO America® and FASCO Italy® are registered trademarks of the BECK Fastener Group.

Circle Reader Service #359

[WWW.RURALBUILDER.COM](http://WWW.RURALBUILDER.COM)

When **Quality Matters**  
**SELECT THE**  
**BEST**

### SNOW RETENTION SYSTEMS



**Snow DEFENDER™**  
**4500**

### METAL TO WOOD FASTENERS



AVAILABLE IN  
**ANY COLOR**

**Fastgrip™**



### METAL ROOFING ACCESSORIES

**DEKS**  
Easy to Work With



**FloVent™**



on over **1,600** Metal Roofing  
Accessories and Fasteners

**LEVI'S™**  
BUILDING COMPONENTS

Call for a FREE Catalog!  
**(877) 897-7020**

[www.levisbuildingcomponents.com](http://www.levisbuildingcomponents.com)

Circle Reader Service #392

# Should you lease or buy?

New rules to impact the lease/buy decision

**EVEN AS CREDIT BECOMES MORE READILY AVAILABLE**, whether to buy or lease is a question facing many builders and contractors.

While there is no one correct answer that fits every situation, nor every rural building business, compared to the simplicity of buying, leasing is far more complicated and may be getting more complex.

Thanks to negotiations between the International Accounting Standards Board (IASB) which sets rules for many countries around the globe, and the U.S. Financial Accounting Standards Board (FASB) which writes the rules in the United States, the lease accounting rules as we currently know them are changing. The new rules will soon require many businesses to add all but the shortest leases to their balance sheets as liabilities, much like debt, affecting the way potential lenders, investors and suppliers view the building operation.

Today, few leases get recorded because the guidelines allow lease contracts to be structured to appear as simple rentals. If an obligation is not recorded on a balance sheet, it makes a business appear less leveraged than it really is.

The existing guidance under the “Generally Accepted Accounting Principles” (GAAP) says businesses are only required to record lease obligations on their balance sheets when the arrangements are comparable to financing transactions, such as rent-to-own contracts for buildings or vehicles.

According to the Accounting Standards Update (ASU) No. 2016-02, Leases (Topic 842), businesses that lease assets—or lessees—will now be required to recognize assets and liabilities on their balance sheets for leases with lease terms of more than 12 months. Previously, the recognition, measurement, and presentation of expenses and cash flows arising from a lease for lessees primarily depended on its classification as a finance (capital) lease or operating lease. But unlike current GAAP in the U.S., which requires only capital leases to be recognized on the balance sheet, the new standard requires businesses to include both types of leases.

Obviously, this is a huge change from current practice requiring lessees to record a large asset and a large liability on their balance sheet. Businesses will no longer be able to structure lease agreements to achieve off-balance-sheet reporting and will, in many cases, have to monitor the effect of this change on their debt-to-capital ratio and related

debt covenants, among other things.

The new guidance is not expected to prevent any builder or contractor from acquiring the equipment and business assets necessary to grow their operations. In fact, there are many reasons to lease equipment, and the primary factors will remain intact under the new rules—from maintaining cash flow, to preserving capital, to obtaining flexible financial solutions, to avoiding obsolescence.

In addition to making balance sheets larger, the new guidelines will change income statements for many building businesses. Currently, a business that leases equipment for \$1,000 a year for five years would show a \$1,000 expense each year.

Under the new guidelines, that same business would show a larger expense in early years and a smaller one in later years. That is because the accounting would be similar to a situation where the builder or contractor had borrowed money to purchase the asset, paying off the loan in equal payments over five years. In early years, the interest expense would be higher than in later ones.

Another significant change will mean that most real estate leases will be accounted for differently. While they, too, would go on the lessee’s balance sheet, the value would be based on the expected lease payments over the life of the lease. The lessee would not, fortunately have to assume that it would exercise renewal options—unless those options were so favorable as to clearly give it a financial incentive to renew.

If, however, the rent would vary based on an index—like the Consumer Price Index—the initial value would be based on the current level of the index. The values of the asset and liability would be updated every year as the index changed.

Equipment leasing is similar to a loan in which the lender buys and owns equipment and then “rents” it to a lessee at a flat monthly rate for a specified number of months. Although lease financing is generally more expensive than bank financing, in most instances it is also more easily obtained.

Admittedly, leasing offers real advantages, including reduced cash outflows and greater control. Among the reasons given by small business owners for leasing are the ability to have the latest equipment, consistent expenses for budgeting purposes, help in managing company growth and no down payment.

The new lease accounting guidelines, like the FASB’S slightly older set of rules on recognizing



Mark Battersby has more than 35 years experience in small business issues, tax and financial matters. Contact him at 610-789-2480 or [MCBatt12@Earthlink.net](mailto:MCBatt12@Earthlink.net).

## new rules

The new rules will soon require many businesses to add all but the shortest leases to their balance sheets as liabilities.

# NEW QUAD<sup>®</sup> MAX

THE FIRST LINE OF  
DEFENSE AGAINST  
THE ELEMENTS.

Simply put, QUAD<sup>®</sup> MAX delivers the toughness that really makes a job last. By providing superior protection against air and moisture, it gives you zero reasons to worry about a job once you've done it right the first time.

COME GET SOME AT  
[OSITOUGH.COM](http://OSITOUGH.COM)



BY MARK BATTERSBY

income, also offers a treat for many small businesses, albeit a somewhat hidden and hard-earned good thing. The new leasing guidelines will, admittedly, require a detailed collecting and spread-sheeting of existing leases held by the building busi-

ness. Fortunately, such an accounting will allow a serious study of how well all of those leases fit into the operation's business model.

Should the business continue on its past course with automatic "as is" lease

renewals? After all, while much focus is on the cost of compliance, there are also ways to identify cost savings by examining the leasing activities of the building business. Another question is whether existing contracts with customers that generate revenue are still the right one for the business now that new guidelines exist for when revenue must be recognized?

Publicly-traded companies will be required to adopt the new standard for fiscal years beginning after December 15, 2018. For calendar year-end public companies, this means an adoption date of January 1, 2019, and retroactive application to previously-issued annual and interim financial statements for 2017 and 2018.

Non-public companies, such as many privately-owned building operations and businesses, will be required to apply the new leasing standard for fiscal years beginning after December 15, 2019. Thus, for most builders and contractors this means an adoption date of January 1, 2020, and retroactive application to previously issued annual financial statements for 2018 and 2019. And, no one will object if an organization jumps the gun in applying the new guidelines.

Although these effective dates might seem like they are quite far away, every builder and contractor business should begin preparing for the new lease accounting requirements now. After all, with many building operations involved with a number of leases—and lessors—the long adoption period can mean fewer surprises with existing leases.

Should your building operation or business lease or buy equipment? Leasing equipment and other business property can be a good option for a business with limited capital or in need of equipment that must be upgraded every few years. Purchasing equipment can be a better option for established businesses or for equipment that has a long usable life.

Although taxes play a role in whether to lease or to purchase, they should not be the deciding factor. But, will the new accounting guidelines and the accompanying impact on the operation's financial status come as a surprise? Most importantly, when should your building business begin playing under the new rules? **RB**



**MB™ New Micro-Bit™ Engineering**  
Patent Pending

**Stronger, More Consistent, Drill Point**

The #1 complaint regarding sharp point screws is that they often drill slowly or not at all. SEALTITE has married its metal building fastener technology into its new KWIKSEAL® MB™ with micro-bit engineering. This KWIKSEAL® MB™ will eliminate the slow drill or no drill complaint. The transition thread will still generate superior holding strength in all wood substrates. The point will generate small metal shavings & eliminate the long "pigtail" prevalent with sharp point screws. It all adds up to a cleaner, more consistent application.



**Easy Multi-Layer Penetration**

The MICRO-BIT will penetrate multiple thicknesses of metal panel often found at ridge cap applications more consistently than sharp point screws.



**Eliminates Slow or No Drill**



**No Pig Tails**

**Call Today 800-352-4864**

Most powder colors of the 10 x 1", 10 x 1 1/2", & 10 x 2" KWIKSEAL & ZXL WOODBINDER are available with the micro-bit point. The 10 x 2 1/2", 10 x 3", & 12 x 3/4" Stitch will be available 3rd quarter 2016



© 2016 Sealtite Building Fasteners

Circle Reader Service #429

# SPRING POLYCARB PROJECT?

## WE'VE GOT YOU COVERED.

*Palram Sunsky®  
polycarbonate  
sheeting  
available through  
CannonBall.*

*Specialty profiles  
& MetalMatch™  
technology transition  
seamlessly into your  
steel profile.*

*Custom lengths and  
job-pack quantities  
available from  
CannonBall to meet  
project needs.*

*Speak to  
CannonBall about  
**special pricing  
opportunities**  
in May & June!*



800-766-2825 • Beloit, WI

[www.cnbhnp.com](http://www.cnbhnp.com)

# Starting at the top: Trusses

## A case for T-bracing

**BUILDING FAILURES OFTEN START AT THE TOP.** A strong truss ensures for a stronger building, adaptable to the rigorous winds and rumblings of nature.

One method worth considering as today's buildings grow bigger and more complex is T-bracing (or T-reinforcement).

An advocate for T-bracing is David Brakeman, engineering director and vice president for Alpine, an ITW Company; member of the Truss Plate Institute; and a 2016 inductee of the *Rural Builder* Hall of Fame. He believes post-frame builders in particular should consider its use as part of the permanent bracing system as an alternative to the conventional lateral and diagonal bracing system.

He starts with a brief description of the conventional system.

"Some parts of the truss are long and slender, and if that's a compression member, it can buckle if not held in place. What we find in post frame is what we call the lateral bracing, bracing that would run perpendicular to the trusses in the web," he said.

If done correctly, diagonal bracing is used in conjunction with lateral bracing to complete the job to help stabilize the forces that accumulate.

The use of permanent lateral and diagonal bracing is correct, but Brakeman thinks T-bracing offers added advantages in terms of safety and manpower, and at a lesser expense.

"Instead of running those laterals and diagonals, that have to be installed after the trusses are all up and in place, you can reinforce those members by nailing on a T-brace," Brakeman explains. He goes on to describe the process.

"For example, if the web is a 2x4, you would take another 2x4 the same length as that web, and nail it on the side, so the cross section would look like a T."

The advantage? Brakeman says it doesn't take any more material to do that because you're eliminating all the laterals and diagonals. "Instead, you're using that same material to put on these T-braces and you can do that on the ground before you lift the

truss. So you save a lot of labor on guys having to climb through trusses up in the air, and it's a lot safer."

Brakeman would like to see all post-frame builders using the T-bracing system and he will continue to advocate for its use. While his own experience with post-frame builders supports his comment that most are very good at building strong, safe buildings, he knows that not all of today's newer, long-span buildings are given an equal opportunity to survive.

"When we get substantial snowfalls, there's going to be buildings that have been built within the last few years that will be tested," he predicted.

Of particular concern are wide-span buildings, often used for animal confinement, with large, long corridors.

"They're wide buildings, 100 foot or 200 foot wide, and that's more than what can be spanned with one truss," he said, "so you have two half-trusses butting back-to-back and meeting in the middle. If those aren't braced well, they'll buckle. You don't even have to get the design load on it to have a problem when the bracing is incomplete.

"Any post-frame builder who has been around a few years knows about this issue," he continued. "In the northern tier of the United States it's pretty well known. But a solution is the use of the T-bracing technique, so if your crew doesn't get all the laterals and diagonals in all the right places, T-bracing is a more effective way to do it, and at a lower cost."

Can T-bracing be used for other types of construction? Brakeman said, "Yes! It's a good alternative for many roof truss-framing situations in any type of building, but it's particularly good in post-frame construction because the trusses are almost always placed at a 4 foot on center or greater and this makes it harder to install the lateral and diagonal type of bracing."

For a more technical explanation of the T-bracing method, read the following article provided by the Structural Building Components Association.

## T-REINFORCEMENT

**THE TRUSS INDUSTRY MAINTAINS THAT THE DESIGN OF TRUSS ROOF AND FLOOR SYSTEM PERMANENT RESTRAINT/BRACING IS THE RESPONSIBILITY OF THE BUILDING DESIGNER.**

System permanent bracing covers the entire structure and all reinforcing/bracing element interactions. An exception to this is identifying the locations of compression web

restraint. Compression web restraint is different because, as designers and manufacturers, we are taking responsibility for the design and structural performance of the

individual components. We must make certain that each truss is designed and built to support the loads stated on the truss design drawing.

Compression web restraint generally takes the form of continuous lateral web restraint. If it is required on a truss, the Truss Designer will point out the location on the Truss

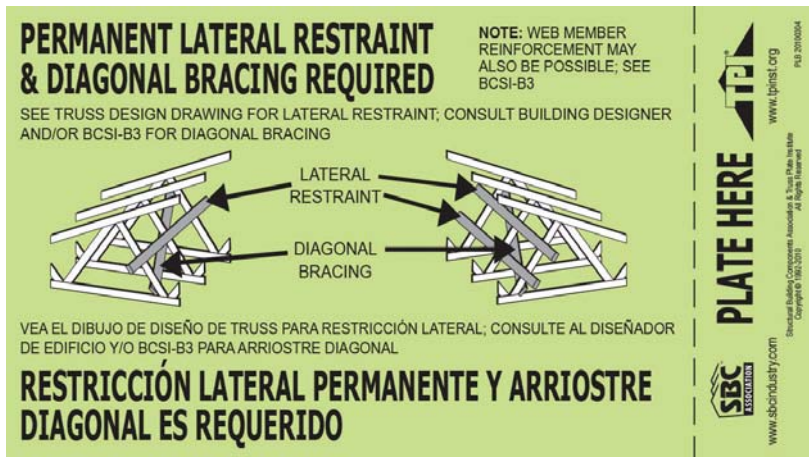


FIGURE 1: PERMANENT LATERAL RESTRAINT tag

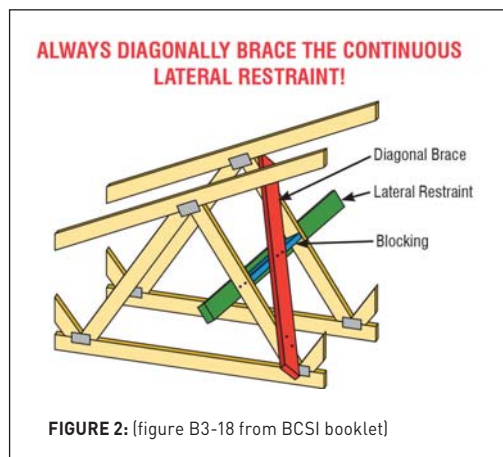


FIGURE 2: (figure B3-18 from BCSI booklet)

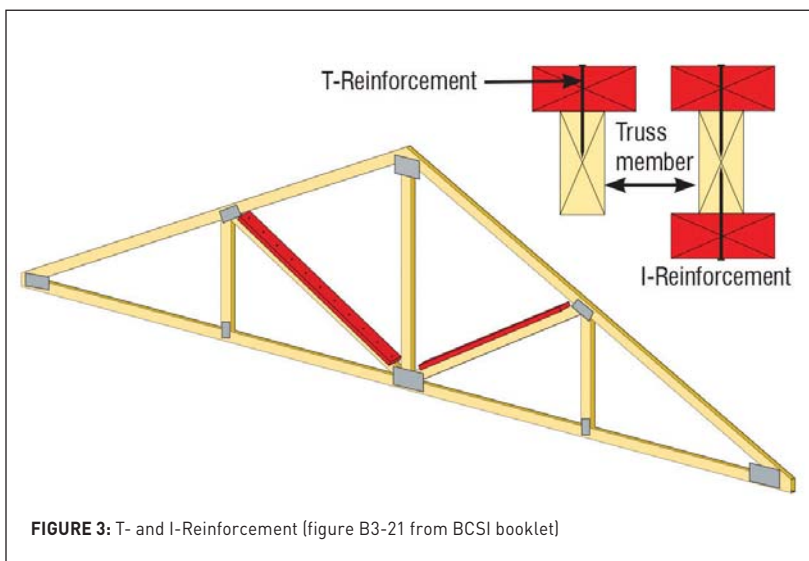


FIGURE 3: T- and I-Reinforcement (figure B3-21 from BCSI booklet)

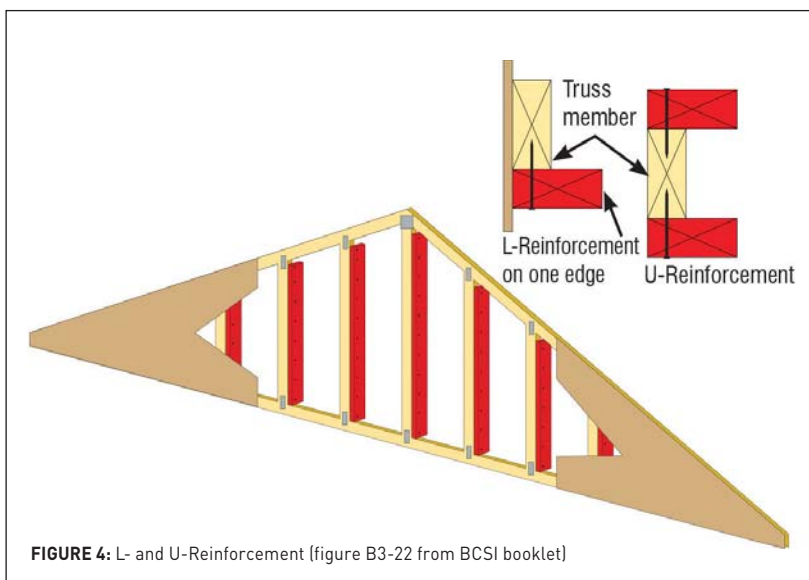


FIGURE 4: L- and U-Reinforcement (figure B3-22 from BCSI booklet)

Design Drawing. To avoid this from being overlooked in the field, manufacturers may also indicate the location of the restraint directly on the truss by using a SBCA/TPI PERMANENT LATERAL RESTRAINT tag (Figure 1). This lateral restraint stabilizes the web, decreases its tendency to buckle under compression forces and allows the web to reach its full design capacity.

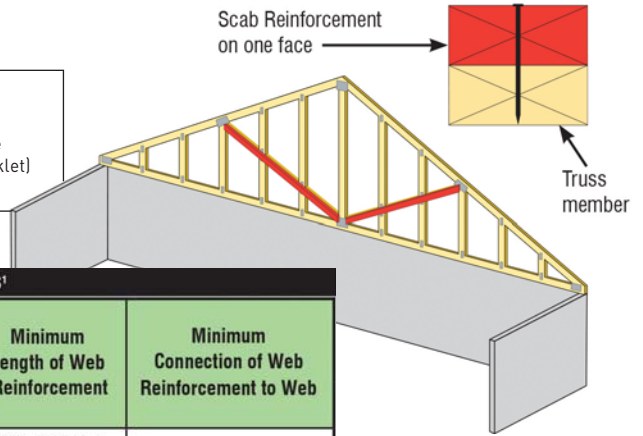
What happens when permanent lateral restraint is not possible to use for the given truss system or individual truss type? The following question deals with alternatives to continuous lateral restraint for webs.

**QUESTION:** What is T-Reinforcement? What is it used for?

**ANSWER:** T-reinforcement takes the place of continuous lateral restraint (Figure 2). With T-reinforcement, the web in question must be reinforced along approximately 90 percent of its length or extend to within 6 inches of the end of the member, whichever is greater. The reinforcing material is applied to the web such that in cross section it forms a “T” with the web (Figure 3). Other variations on this type of reinforcement are I-reinforcement (Figure 3), L-reinforcement (Figure 4), U-reinforcement (Figure 4) and scab reinforcement (Figure 5).

The end result of continuous lateral web restraint or T-reinforcement is to stabilize the web so that it will be able to transfer the compression loads for which it was designed. Refer to *Building Component Safety Information* (BCSI-B3) or standard details from the Truss Designer or Building Designer for minimum attachment of the required restraint/reinforcement to the truss

**FIGURE 5:** Scab Reinforcement (figure B3-23 from BCSI booklet)



**TABLE 1:** Web Reinforcement for Single-Ply Trusses (table B3-2 from BCSI booklet)

WEB REINFORCEMENT FOR SINGLE-PLY TRUSSES <sup>1</sup>								
Specified CLR	Size of Truss Web	Type & Size of Web Reinforcement				Grade of Web Reinforcement	Minimum Length of Web Reinforcement	Minimum Connection of Web Reinforcement to Web
		T	L	Scab <sup>2</sup>	I or U			
1 Row	2x4	2x4	2x4	2x4		Same species and grade or better than web member	90% of Web or extend to within 6" of end of web member, whichever is greater	16d (0.131x3.5") nails @ 6" on-center <sup>2</sup>
	2x6	2x6	2x6	2x6				
	2x8	2x8	2x8	2x8				
2 Rows	2x4	---	---	---	2-2x4			
	2x6	---	---	---	2-2x6			
	2x8	---	---	---	2-2x8			

<sup>1</sup>Maximum web length is 14'.

<sup>2</sup>Attach Scab Reinforcement to web with two rows of minimum 10d (0.120x3") nails at 6" on-center.

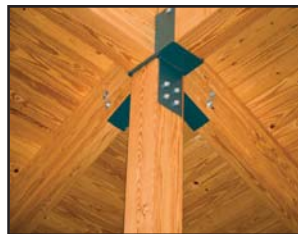
member (see Table 1).

Article Source: SBCA has been the voice of the structural building components industry since 1983, providing educational programs and technical information, disseminating industry news, and facilitating networking opportunities

for manufacturers of roof trusses, wall panels and floor trusses. SBCA endeavors to expand component manufacturers' market share and enhance the professionalism of the component manufacturing industry. Visit online at sbcin-dustry.com. **RB**



MANUFACTURERS OF - GLULAM BEAMS - POSTS - ARCHES  
- PAVILIONS - BRIDGES - HEAVY TIMBER TRUSSES



701 E. Linden Street Richland, PA 17087

Ph: (717) 866-6581 - Fx: (717) 866-7237

[www.rigidply.com](http://www.rigidply.com)

Circle Reader Service #382



Photo credit: Starwood Rafters

## QUICK GUIDE TO TRUSS PRODUCTS

### Truss manufacturers:

**STARWOOD RAFTERS / CIRCLE 145**  
Starwood's Lam-Ply is stronger than the conventional truss. In most applications it can be spaced farther apart to reduce erection time and labor costs. Its closed-web design makes the truss bird-proof.

**K&K INDUSTRIES INC. / CIRCLE 146**  
K&K manufactures roof trusses and is a full-line distributor for LVL and LSL beams, truss chords and roof OSB products. Based in Montgomery/Loogootee, Indiana, it primarily ships to lumberyards within a 170 mile radius.

**DL TRUSS/STRUCTURAL  
GLULAM LLC / CIRCLE 147**  
Its 3- and 4-lamination trusses are treated 0.60 retention, feature glued finger joints and come in standard lengths up to 36 feet.

**RIGIDPLY RAFTERS INC. / CIRCLE 148**  
Truss design is completed by an in-house design department that is supervised by a Mitek-registered professional engineer and sealed for the specific state.

### Truss connector manufacturers:

**SIMPSON STRONG-TIE / CIRCLE 149**  
Simpson Strong-Tie offers a full line of code-listed truss connector plates.

**EAGLE METAL PRODUCTS / CIRCLE 150**  
Eagle has truss connector plates, TrueBuild structural design software, engineering services and manufacturing equipment.

**SHEAR-X / CIRCLE 151**  
Shear-X is a truss bracket that allows the use of continuous ridge vents in both blocked or unblocked diaphragms.

### Truss installation / safety tools

**TRUSSMATE / CIRCLE 152**  
Reusable truss installation tool designed to reduce manpower and equipment while increasing safety.



## LAM-PLY TRUSS

The Truss That Will Carry The Load

- Spans up to 72 ft.
- Spacings up to 12 ft. on center, depending on the load you desire
- Bird Nesting Control
- Better Ventilation & Visibility
- No Feed Alley Post Obstruction
- Additional Ceiling Height

#### Starwood Rafter Uses

- Pole Sheds
- Free Stalls
- Pavilion Shelters
- Machinery Storage
- Riding Arenas
- Solar Barns

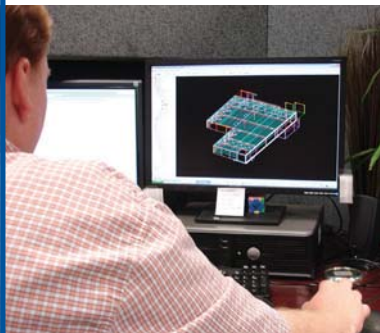


Starwood Rafters, Inc.  
W24141 Starwood Lane  
Independence, WI 54747  
(715) 985-3117 • 888-525-5878  
[www.starwoodrafters.com](http://www.starwoodrafters.com)

Circle Reader Service #375

*The building suppliers you can trust focus on*

## BUILDING STRONG RELATIONSHIPS.



The most solid foundation upon which to build a partnership is trust. That's why, for more than 60 years, Varco Pruden has focused on creating relationships that last.

Our interest is always your best interest. While we offer decades of experience and expertise, constantly educating ourselves on your environment and consumers, we also take pride in our loyalty and value our credibility. You can depend on us to work for you. Because we're not just reliable, we're dedicated. And we never compete against our builder partners.

We offer superior products and service, including:

- ◆ Unrivaled quality
- ◆ Cutting-edge technology and innovation
- ◆ Unequaled marketing tools and resources
- ◆ A wide array of products
- ◆ Experienced project management and field support

Contact Varco Pruden today. Let us show you how, together, we can add value to your business and your reputation.



BECOME AN AUTHORIZED VARCO PRUDEN BUILDER TODAY.

Call 1-866-538-0012 or log on to [www.VP.com/ad/RBM](http://www.VP.com/ad/RBM).

Circle Reader Service #301

# What's up with that?

New truss products for old problems

## Problem: How to stabilize buildings from shear affects (high winds and seismic activity)

When it comes to successful inventions, Marty Rotter is not a new kid on the block. He has more than 60 domestic and international patents and patents pending to his name. They range from sewing machines to machinery, from nails to ventilation systems. Ridge vents are a particular forte and his company, Garwood Manufacturing, Glenside, Pennsylvania, offers about 48 different types of ridge vents.

He developed Shear-X after an unfortunate business venture in California. As the story goes, he was working with a tile manufacturer to offer a ridge ventilation system on tile-roofed buildings in the Golden State when code officials stopped them cold.

"The building codes would not permit us to cut a slot in the roof to install the ridge vent system," he said.

There was no alternative available at the time, so he walked away from the project, but vowed he would one day develop a solution. About five years ago he started the research and development process for the Shear-X.

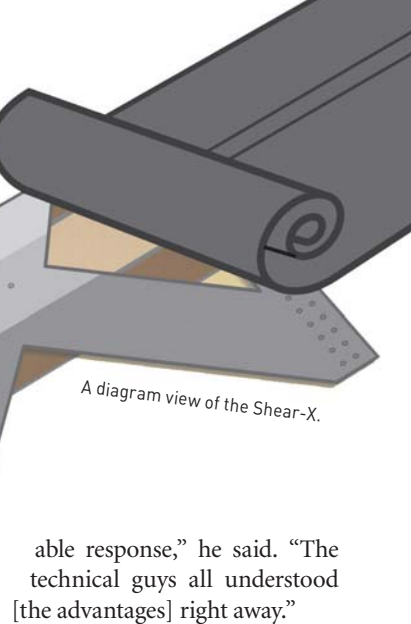
During development, someone noticed

the product's ability to handle seismic activity. "I started looking into it and found out that the Shear-X product had a significant affect on mitigating the shear effect from high winds and seismic activity," he said. "So tornadoes, hurricanes and seismic activity, all three, could be affected by using this bracket."

The research continued and so did more good news. "We also found out that in portal areas, where you have picture windows or garage doors, we can stabilize these areas on an ongoing basis. We found about 18 places within the building envelope where the bracket adds about 4,000 pounds of pressure value to the building with each bracket, which is rather significant."

He ultimately also developed a Shear-X ridge vent system to work specifically with the bracket.

When the product was finally ready, Rotter went back to where it all began, California, armed with his patent-pending, ANSI-certified Shear-X. He went right back into the belly of the beast, attending the CALBO (California Building Officials) show. "And we had an unbelievably favor-



A diagram view of the Shear-X.

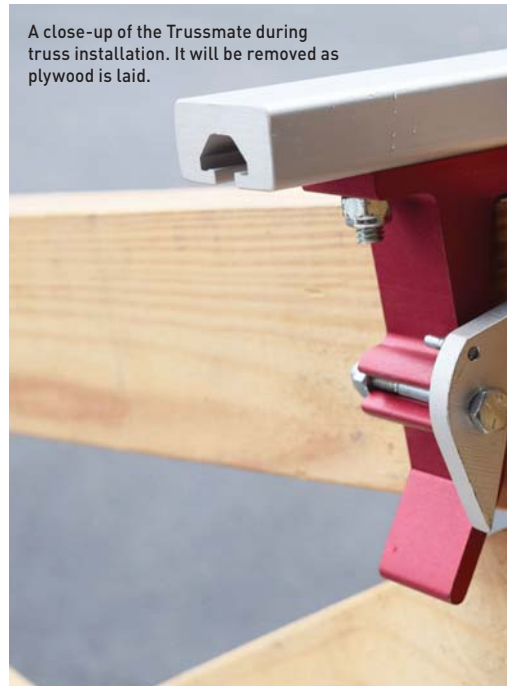
able response," he said. "The technical guys all understood [the advantages] right away."

As well, he attended the 2016 Frame Building Expo in Indianapolis this past March, where he was also well pleased with the response. There, he touted the advantages of the Shear-X to help stabilize wide-span buildings. "It can help to stabilize in all kinds of places in the barn, where there are lots of open corner areas, large doors, ridge vents," he said.

Though currently sold through Rotter's company, he is working to have the Shear-X available soon through additional suppliers.

## Problem: How to set trusses quicker and safer when the help doesn't show up for work

Throughout the construction industry, employers are facing the same dilemma: how to find people willing to



A close-up of the Trussmate during truss installation. It will be removed as plywood is laid.

# TRUSSMATE®

**Saves Time,  
Makes Money &  
Use Over and Over!**

*Easy steps...*  
*This tool is a must have for  
all your truss-setting jobs.*

**502.468.7541 • [www.trussmatetools.com](http://www.trussmatetools.com)**



Circle Reader Service #562

work and to work safely. Ray Koetter, owner of Ray Koetter Construction, was facing that problem more often when he took things into his own hands and developed the Trussmate tool.

"I was setting 50- to 60-foot trusses and I couldn't get enough help to do it," he said. "You need two or three guys in the middle and one on each end and two guys on the ground getting them ready to go. Setting trusses can be a timely and dangerous process. I believe there had to be a better, quicker and timely way of doing it, with safety being the key issue."

Several prototypes and six years of using the Trussmate tool on job sites resulted in a quality solid-aluminum tool that locks on.

Koetter explained how it works. "Where you would have a normal truss tie you would put [a Trussmate]," he said. "All you do is slide the Trussmate on the truss, and put a nail in it, tack it on pretty good so it doesn't fall off."

This is done safely on the ground.

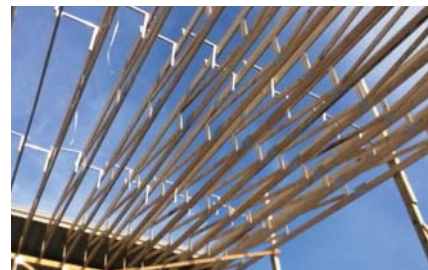
Then you're ready to hoist the truss with a crane. One man can set the truss in place from the safety of a manlift. "You get one end even with the wall, bump the guide and set the truss down and it will automatically lock on to an existing set truss," he went on to explain.

The Trussmate is easily removed and

reused for subsequent trusses.

If there is any learning curve with the tool, Koetter said, "it's making sure that you line up the end of the truss with the wall before setting it down."

Koetter decided to make his tool with solid aircraft aluminum after talk-



COMMERCIAL • RESIDENTIAL • INDUSTRIAL



# Master Flash®



### 35 Year Master Flash®



- 14 Sizes • Compound / Black EPDM
- Pipe Range: 1/8" to 28-1/2" (3-723mm)
- The Only Flashing listed with a Florida, California Residential and Building Codes®



### Electrical Mast Connection Master Flash® Specifically Designed for the Residential Industry

- Two Compounds / EPDM / Red / Grey Silicone
- Pipe Range: 0" to 5-3/8" (0-136mm)
- Built in 20° pitch allows adaptability to almost any roof pitch including 45°



### End Cap Master Flash® Standing Seam Roof End Cap Flashing

- Applications:**  
Skylights • Metal Curbs • Ridge Applications
- 3 Sizes • EPDM Black & Grey



### Standard Master Flash® Available Colors



- 14 Sizes • 10 Colors
- Two Compounds: EPDM / Red Silicone
- Pipe Range: 1/8" to 28-1/2" (3-723mm)



### Universal Master Flash® Available Colors



- 10 Sizes • 12 Colors
- Two Compounds: EPDM / Red or Grey Silicone
- Pipe Range: 1/4" to 19" (6 - 482mm)



800 WASHER 5 (927-4375) • PH: 858 513-4305  
www.aztecwasher.com • info@aztecwasher.com

Circle Reader Service #441



BY SHARON THATCHER

ing to an engineer who advocated that it would make the tool lightweight, yet strong, durable, anodized and weather resistant.

There is only one moving part, and that is a stainless steel spring. “There’s nothing on it that can rust,” Koetter said.

The tool was tested by Curtis-Wright Surface Technologies to determine the load value before slippage.

“The pull on the tool tested to over 4,400 pounds,” he said. “The truss will break before the tool. Using the normal way to set trusses, 2x4s nailed to a 2x6 will slip at 690 pounds.”

In a normal truss-setting operation, experienced builders take 15-20 minutes per truss using seven or eight crewmembers. “The whole process of setting trusses is set-one-and-wait,” Koetter said, noting that crane and labor costs quickly add up.

He claims he can set trusses in a fraction of the time and expense, and far more safely. He developed a YouTube video that shows the process for a 55-foot truss, 30 feet in the air, “and we’re doing it in 50 seconds,” he said, adding that it “stabilizes and spaces the trusses before anyone needs to be on them.”

The video shows the process using a couple guys on the ground prepping the truss with the Trussmates, the crane operator lifting the truss, and only one guy in the air guiding it in from the safety of a manlift.

At the Frame Building Expo Koetter had some guys buying Trussmates in small quantities to give them a try. “A lot would say they would buy enough to set a few trusses and then put their purlins on, but I was trying to explain to them that you’re going to be setting trusses so fast you’re going to want more to do the whole building.”

As a gauge, it takes about 45 Trussmates for a building with 40- or 50-foot wide trusses, 60 feet long. He does sell the tool individually as well as in bundles.

Another concern expressed at the expo was from builders who obviously don’t have the same issues of manpower that Koetter has. “Guys at the show said, what am I going to do with my extra guys? And I would tell them, use your crew wisely, have them go back and put purlins and plywood on. The days of using eight crew members to set trusses is over with using this tool.”

Koetter is selling the tool online and is negotiating with potential distributors. **RB**

BY MIKE MOMB

## Prefabricated roof trusses

They can make you or break you

**I WORKED FOR, MANAGED OR OWNED ROOF TRUSS MANUFACTURING FACILITIES** from 1977 until 1999—so we only ever had to operate under the pre-International Building Codes, which made our lives easy.

Regardless of roof slope, exposure to wind, roofing material, whether a building was heated or unheated, the top chord live load (or roof snow load) was the same within any localized geographic region, with the exception of differences in snow load caused primarily by elevation changes.

When a client brought in a set of plans, we took on the responsibility to insure the quantity of trusses, roof and ceiling profiles, etc., were correct. We looked upon ourselves as being the experts—rather than the builder or building owner who was purchasing the trusses.

Walk in the door of a truss company today with a set of plans for a truss quote and the expectation is the purchaser has to be “in the know,” which I personally find counter intuitive, but it is the current reality.

As a broad generalization, today’s truss manufacturers are looking out for one entity, and it is not the person writing the check to pay for their product.

I am going to share some secrets which should both increase your bottom line as well as allow you to sleep soundly at night.

First—do not assume the truss company is going to do it right. It is better to take the more realistic position of, they will do it wrong. Wrong can result in an increase in the probability of a catastrophic failure, having to pay more than one should, or both.

Secondly—if you are shopping various vendors, the best price on the truss order might not be the best buy for your building.

### **A little sharing into how to make sure the trusses you order actually meet the required load conditions.**

I am going to put in a plug here for Registered Design Professionals or RDPs. If you are constructing post-frame buildings, or providing post-frame building kit packages, and are not using originally RDP sealed plans, which are specific to the address where the building is being erected, you are seeing the light at the end of the tunnel and the light is a speeding train.

Maybe you have built or provided hundreds or even thousands of buildings and



**Mike Momb** is technical director for Hansen Pole Buildings, LLC of Browns Valley, Minn. His daily post-frame blog, as well as his weekly “Ask the Pole Barn Guru” column can be followed at [www.hansenpolebuildings.com/blog/](http://www.hansenpolebuildings.com/blog/).

never had a failure. Trust me, the failure is going to come, and may have nothing to do with how the building was designed, but if an RDP did not design it you are placing yourself and your business at a tremendous risk.

**On to important stuff, the Building Codes**

The IRC (International Residential Code) is a prescriptive code for stick-frame buildings within limited parameters of snow and wind loads. It does not address post-frame construction, therefore all post-frame buildings should be designed using the IBC (International Building Code).

The International Building Code (IBC) identifies the appropriate Ground Snow Load (*P<sub>g</sub>*) to use on a building based upon its location. When jurisdictions adopt the IBC, they should also be designating the *P<sub>g</sub>* value or values within their area of coverage. Some building officials are still rooted in the 1900's and (contrary to the current code) designate a Roof Snow Load, which often defies the laws of physics.

A case in point, not too many years ago, we provided the post-frame building kit package for the Nature Center at the Cheyenne Mountain Zoo in Colorado Springs, Colorado. The building department gave the ground snow load as 27 psf (pounds per square foot), yet wanted 40 psf as the roof snow load. When



Truss bracing is important, and when neglected can result in catastrophic failures. When overdone, it can kill a building budget in materials and labor.”

our engineer called the building department to discuss this, the explanation given was, “The snow is just different here!”

Truss design programs calculate the roof snow load using *P<sub>g</sub>* as the basis and multiplying it by several factors. This is the formula for the relationship between the ground snow load and the roof snow load adjusted for slope or *P<sub>s</sub>*:  $P_s = 0.7 \times C_s \times C_e \times C_t \times I \times P_g$ .

All of these factors should be clearly outlined on any set of plans being submitted for a structural plan check to a build-

**SNOBAR**

**THE SOLUTION IN PREVENTING AVALANCHING SNOW**

**“Free” Design Assistance**  
**“Free” Lifetime Warranty**

Don't be fooled, **SNOBAR** is the first patented snow bar system which works on most roof types.

- \* Fastest to install.
- \* We may not be the cheapest but we have the best quality and service.
- \* **SNOBAR** has four clamps for standing seam roofs in lieu of a whole alphabet to get the job done.
- \* Major components can be painted to match the roof.
- \* Our bars drop into our clamps.
- \* Optional Ice Stoppers can be added after the fact.

**SNOBAR.com | 800.711.9724**



# Introducing the Digital Catalog Library

**DYNAMIC FASTENER**  
*Empowering for the Metal Builder & Buyer*  
 2016 TOOL & FASTENER HAND GUIDE  
 Over 90% of standard orders received by 4:00 p.m. EST will ship that same day!

**DYNAMIC FASTENER**  
 FULL LINE CATALOG,  
 DYNA-GUARD AND DYNA-CLAMP

**I-BEAM SLIDING DOORS**  
 FULL LINE CATALOG

**DOORS DONE RIGHT. DOORS THAT WORK!**

Models include: Ultra-Glide™, Ultra-Glide™ with Rollers™, Ultra-Glide™ with Rollers™ and Ultra-Glide™ with Rollers™

- Door kits are delivered to your desired location with all the hardware and hardware pre-cut, pre-painted for ease of installation.
- Doors are constructed of lightweight aluminum I-beams that are designed for openings up to 48' wide by 20' high.
- Heavy duty military grade rollers and high strength steel brackets and hardware are self-lubricating with grease-free.
- 12" x 12" steel rollers with built-in anti-rattle when you set it you will believe it.
- Ultra-Glide™ is the only line of overhead doors with a 4,000 lb. capacity and Ultra-Glide™ has a weight capacity of 6,000 lbs.

2015

**got clips?**  
 Building Products Development  
 Standing Seam Clips and Accessories

Toll Free: 888-386-2354 • Fax: 0176-729-2543  
 1100 East Main Street • Leavenworth, WI 54941  
[www.bpdclips.com](http://www.bpdclips.com)

**bpd**  
 Building Products Development, Inc.  
 FULL LINE CATALOG

**PAC-CLAD** 50 YEARS  
 PETERSEN ALUMINUM  
 ARCHITECTURAL METAL ROOF,  
 WALL AND PERIMETER/  
 ROOF EDGE SYSTEMS

**C.H.I.**  
 OVERHEAD DOORS  
 COMMERCIAL BUYER'S GUIDE

**PLYCO**  
 CORPORATION  
 FULL LINE CATALOG-WALK DOORS,  
 WINDOWS, FASTENERS, RIDGE  
 VENTS, CUPOLAS AND MORE

**rFOIL**™  
 Reflective Insulation  
 FULL LINE CATALOG

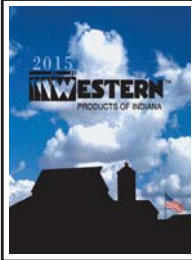
**S-5!**®  
 The Right Way!  
 FULL LINE CATALOG

**DMI**  
 DIRECT METALS INC.  
 POST FRAME CONSTRUCTION  
 COMPONENTS & ACCESSORIES

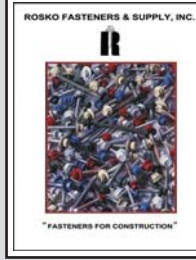
**ST**  
**SEALTITE**  
 BUILDING FASTENERS  
 FULL LINE CATALOG

Rural Builder, Metal Roofing Magazine and Frame Building News are combining resources to create a CATALOG LIBRARY for our readers.

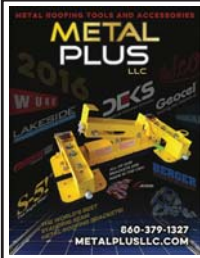
For the first time, Rural Builder, Metal Roofing Magazine, Frame Building News, Roofer Express and Builder Express subscribers can find advertisers catalogs and products literature in one place, online 365 days per year.



FULL LINE CATALOG



FULL LINE CATALOG



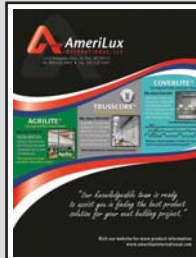
FULL LINE CATALOG



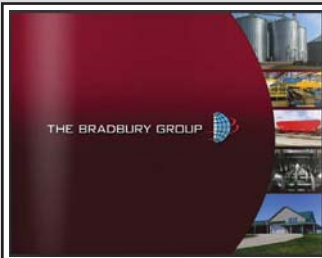
FULL LINE CATALOG



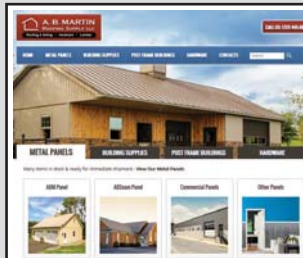
FULL LINE CATALOG



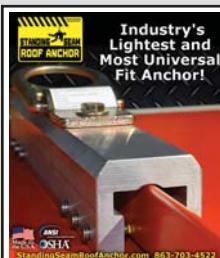
POLYCARBONATE PANELS  
PVC SHEET & LINER PANELS



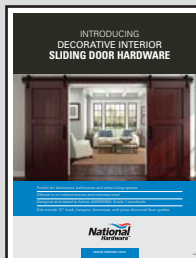
BRADBURY GROUP  
EQUIPMENT CATALOG



ROOFING & SIDING,  
HARDWARE & LUMBER



FALL PROTECTION ANCHOR



NATIONAL HARDWARE  
INTERIOR SLIDING DOOR  
SYSTEMS BROCHURE

## behind the hammer

BY MIKE MOMB

ing department. If not, or there is some doubt, the engineer of record for the building should be consulted to make a written determination.

$C_s$  is the sloped roof factor. Metal roofs are assumed to be slippery surfaces unless the presence of snow guards or other obstructions prevent snow from sliding. It is calculated based upon whether the roof is warm or cold, the nature of the roofing material, and the slope of the roof. With heated, steeply sloped and/or slippery roofs, these reductions can be significant.

The Exposure Factor ( $C_e$ ) is most often 1.0, but can vary from 0.7 to 1.2 and can make a huge difference in both truss design and price.

The Thermal Factor ( $C_t$ ) for heated buildings will be 1.0 or 1.1. However, most post-frame buildings are not heated year round, and if so the factor should be 1.2.

Most truss manufacturers assume a Risk Category II (shown as "Is" or "Importance" factors on truss design drawings). Many post-frame buildings will not result in the loss of human life in the event of a failure, given they are used for agriculture or storage and are Risk Category II. This alone can reduce the roof snow load by 20 percent as compared to residential, office or manufacturing type structures!

Will the building be in an area with little or no snowfall? Don't forget area reductions. If the truss span times the truss spacing is over 200 square feet, a reduction is in order. This calculated value can reduce the roof live load ( $L_r$ ) to as little as 12 psf.

Further, if  $L_r$  is greater than  $P_s$  (sloped roof snow load), the Duration of Load for roof loads is now 1.25, instead of the 1.15 typical default value.

### What can you do?

Make sure the values of  $P_g$ ,  $C_s$ ,  $C_e$ ,  $C_t$  and  $I$  as shown on the plans, are provided to the truss manufacturer and are reflected on the drawings you will be asked to sign off on.

One other important thing to look for—the "fine print" on the truss drawings should state the trusses are designed for an unbalanced snow load (think drifting). Some truss manufacturers will ignore this crucial component of design, in order to reduce their truss price.

### Now, let's save you some money

Truss bracing is important, and when neglected can result in catastrophic failures. When overdone, it can kill a building budget in materials and labor.



## BUILT FOR POST FRAME QUALITY WINDOWS

• AVAILABLE JUNE 2016 •



- Single Hung or Horizontal Slider
- Durable completely welded construction
- UV Stable white vinyl
- Cast / zinc painted window locks
- Insulated glass
- Continuous spacer primary seal
- Interior weeping system
- Deluxe wool pile seals
- Removable insect screen
- Tilt-in sash (Single Hung)
- Available with or without grids
- Four standard sizes available

### FEATURES



Cast Zinc Window Locks



Removable Insect Screen



Welded Construction



1015 32nd Ave West • Spencer, Iowa 51301

ph: 800-360-6467 • FAX: 800-361-3452

www.mwicomponents.com



Circle Reader Service #308



## behind the hammer

BY MIKE MOMB

“The best price on the truss order might not be the best buy for your building.

The truss company will produce preliminary drawings and ask you to “sign off” on them, prior to production. Look at the interior members (webs) which require lateral bracing. These are most typically longer webs which are in compression. Often bracing to web members can be reduced or eliminated by asking the truss designer to switch the direction these long webs run, which will place them in tension. Increasing the size and/or grade of the web can also help. These changes are generally less expensive than the cost of the added bracing.

Lateral bracing needs can also be reduced by using trusses which are physically doubled—installed face-to-face without blocking in between. If your standard building design is for single trusses every four feet placed on a truss carrier spanning eight feet between columns, consider going to a double truss every

eight feet, which eliminates the need for truss carriers.

Why would this reduce bracing? Because the double truss is now a 3-inch wide member, instead of 1-1/2 inches, for the most part cutting bracing needs in half.

Using trusses spaced over 10 feet apart? The truss drawings probably show lateral bracing as a single 2x spanning from truss to truss. Any truss braces spanning over 10 feet should be done as “T” or “L” braces, otherwise they can fail in weak axis bending (the skinny direction) under a load.

Learning to read and understand the information on truss drawings is crucial to the success of your business. Don’t make the assumption the truss company is going to be right. If there is something on a truss drawing which is unclear, ask the truss provider to explain it, in layperson’s terms. If still in doubt, ask your RDP. **RB**



**CERAMIC INSULATING TECHNOLOGY**

**SPACE AGE CERAMICS**

# COOL ROOFS COOL WALLS

## INSULATES, REDUCES HEAT & SAVES ENERGY

### ELASTOMERIC WATERPROOFING INSULATING CERAMIC COATINGS FOR ROOFS, WALLS & MORE

Warranties up to 20 Years!



**PERMAKOTE**  
WATERPROOFING CERAMIC ROOF COATING



**ULTRA SEAL**  
ELASTOMERIC WATERPROOFING INSULATING CERAMIC PROTECTIVE WALL COATING



**KEEP YOUR LIVESTOCK & BUILDINGS COOLER**



OVER 100 QUALITY PAINT & COATING PRODUCTS; CALL FOR A PRODUCT CATALOG!



**NATIONWIDE PROTECTIVE COATING MANUFACTURERS, INC.**  
SARASOTA - FLORIDA - USA



ACCREDITED BUSINESS  
A+ RATING  
Member Since 1997

**The PERMANENT Coating Solution™**

1.800.423.7264  941.753.7500

Circle Reader Service #463



Looking for more information from companies featured in this issue?

Use the Reader Service card facing this page to get **FREE** information from our advertisers!

Free online info at [www.bit.ly/info-rbfn](http://www.bit.ly/info-rbfn)

### ADVERTISERS

RS #	Company	Page #
291	AB Martin.....	37
441	Aztec Washer Co.....	27
	Bradbury Group, The.....	49
386	Cannonball: HNP, LLC.....	21
	Clark Industries.....	49
316	Dynamic Fastener.....	5
498	East Coast Fasteners.....	13
407	Everlast Roofing, Inc.....	37
359	Fasco America.....	17
473	Henkel Corporation.....	19
512	I Beam Sliding Doors.....	7
469	Lakeside Construction Fasteners.....	12
392	Levi's Building Components.....	17
	Marion Manufacturing.....	49
306	Maze Nails Company.....	2
	Metal Rollforming Systems.....	49
331	Metalcon.....	45
412	MFM Building Products Corp.....	43
308	MWI Components.....	32
378	National Frame Building Assn.....	35,39
463	Nationwide Protective Coating Mfrs., Inc.....	33
	Paint Valley Parts, LTD.....	49
313	Plyco Corporation.....	51
	Power Lift Hydraulic Doors.....	49
382	Rigidply Rafters.....	24
449	Rosko Fasteners.....	14
414	Schweiss Doors.....	38,49
429	Sealtite Building Fasteners.....	20
	Semmler Systems, Inc.....	49
589	SnoBar.....	29
540	Spectrum Brands HHI.....	31
375	Starwood Rafters, Inc.....	25
345	Sukup Manufacturing.....	52
425	Triangle Fastener Corp.....	15
576	Tri-State Lumber Company.....	38
562	Trussmate.....	26
301	VP Buildings, Inc.....	25
374	Western Products of Indiana.....	40
511	Wick Buildings.....	9

### STORY RESOURCES

RS #	Company	Page #
<b>SUPPLIER NEWS</b>		
101	Valspar.....	6
102	Dynamic Fastener.....	6
103	Green Span.....	6
104	Beckers Group.....	6
105	Varco Pruden.....	6
106	Petersen Aluminum.....	8
<b>BEST PRODUCT OF THE EXPO</b>		
111	Novaflex.....	10
112	Eclipse Roof System.....	10
113	T17 Wood-X.....	11
114	Master Grippers MDP.....	11
115	Design-It! 3D.....	11
<b>PRODUCT PROFILE: NAILS &amp; SCREWS</b>		
125	Leland Industries.....	12
126	Dynamic Fastener.....	12
127	FASCO America.....	12
128	Atlas Bolt & Screw.....	13
129	East Coast Fasteners.....	13
130	Lakeside Fasteners.....	13
131	Rosko Fasteners & Supply.....	14

RS #	Company	Page #
<b>PRODUCT PROFILE: NAILS &amp; SCREWS (CONT.)</b>		
132	Triangle Fastener Corp.....	14
133	Ideal Building Fasteners.....	14
134	SFS intec.....	14
135	Maze Nails.....	15
136	Levi's Building Components.....	15
137	Sealtite Building Fasteners.....	15

### NEW PRODUCTS

140	Milwaukee Tool.....	16
141	Dynamic Fastener.....	17
142	DeWalt.....	17

### IN FOCUS: TRUSS SUPPLIES

145	Starwood Rafters.....	25
146	K&K Industries.....	25
147	DL Truss/Structural Glulam.....	25
148	Rigidply Rafters.....	25
149	Simpson Strong-Tie.....	25
150	Eagle Metal Products.....	25
151	Shear-X.....	25
152	Trussmate.....	25

## DIGITAL CATALOG LIBRARY ADVERTISERS ON PAGES 30-31

View online at: [www.constructionmagnet.com/catalogs](http://www.constructionmagnet.com/catalogs)



# JOIN NFBA AND SAVE!

Save **50%** on your first year's membership dues\* when you apply through **May 31, 2016!**

\*A company is eligible for the 50% discount on membership rates only if it has never been an NFBA member or has not been a member for at least 3 years. The membership discount applies to the first year of NFBA membership dues and does not apply to PFMI assessments or to unified chapter dues in states where applicable.



## 2016 Expo was one for the history books

Strong crowds, sell-out vendor space



**THE WEATHER WAS NICE ENOUGH FOR TRAVEL**, but too wet for outside work: the perfect mix for good attendance at this year's Frame

Building Expo.

Held in downtown Indianapolis in early March, there were concerns that it coincided with the Big Ten Basketball tournaments, but as it turns out, it didn't appear to dampen attendance or enthusiasm. The trade

show aisles were busy and the workshops were well attended.

There were 136 vendors accounting for 23,000 square feet of exhibitor space, that's the most since 2008.

"Based on feedback and comments from both attendees and exhibitors, the 2016 Expo was an event that provided great value and benefit to all," said Ken Gieseke, Chair of the NFBA Board of Directors. "Now, our Expo Planning Committee is using the successes of

Boral was a new exhibitor showing off its TruExterior siding and trim. It uses a panelized design with mechanical fasteners for a quick fit.



**expo in review**

BY RURAL BUILDER STAFF

**SAVE THE DATE! THE 2017 FRAME BUILDING EXPO, SPONSORED BY THE NATIONAL FRAME BUILDING ASSOCIATION, RETURNS TO NASHVILLE MARCH 8-10, 2017. IT WILL BE HELD AT THE GAYLORD OPRYLAND RESORT & CONVENTION CENTER.**

◀ Learning to work as a team was stressed by workshop speaker Bruce Hodes, CMI, Oak Park, Illinois. Here, Rob Pearce (left), Quality Structures Inc., Richmond, Kansas; confers with Ken Culbreth, FBI Buildings, Remington, Indiana, during an exercise on teamwork.



**A. B. MARTIN**  
ROOFING SUPPLY, LLC

Roofing & Siding • Hardware • Lumber



**SUNSKY**  
Sky Lighting • Side Lighting • Ridge Lighting

SunSky corrugated polycarbonate panels stand up to punishing exterior applications and offer multiple advantages over traditional fiberglass corrugated panels. Up to 20 times greater impact resistance, warranted protection against yellowing, and the highest resistance to wind uplift.



82 Garden Spot Rd. | Ephrata, PA 17522 | 717-445-6885  
35 Ridge Rd. | Newville, PA 17241 | 717-776-5951 [www.abmartin.net](http://www.abmartin.net)

Circle Reader Service #291

# The Wrinkled Series

*The One Time You'll Actually WANT Wrinkles!*

Want a distinguished look from every angle? Everlast Roofing can help! We are introducing a new paint finish that not only protects, it dignifies.

The Wrinkled Series provides you a textured paint finish that is available in Everlast's most popular profiles, making this finish an excellent choice for residential and commercial application. Request this series on top of our already proven Everlast II and Everloc panels to create a surface that is tough, scratch resistant and distinct.

**Advantages Include:**

- Low gloss finish
- High durability SMP
- 8 standard in-stock colors
- 35 year warranty

When you want to add character to an old or new roof ask for Wrinkles. The Wrinkled Series by Everlast Roofing Inc., Our Name Says It All!



**Toll Free: 888.339.0059**  
[www.everlastroofing.com](http://www.everlastroofing.com)

Circle Reader Service #407

# expo in review

BY RURAL BUILDER STAFF

the 2016 Expo to create an even better Expo in 2017.”

Gieseke has reasons for optimism. Plans are underway for 2017 and early exhibitor commitments are starting off on a high note, perhaps not surprising since the event will return to a destination favorite, Nashville. **RB**



▲ An expo visitor takes a close look at door hardware in the Western Products booth.

◀ Gary Reichert (left) and Tyler Jenson (center), both of them sales representatives for Rural Builder and Frame Building News magazines, share conversation on the trade show floor with John Young of PowerLift Hydraulic Doors.

**New** **800-746-8273**

# DOORS

- AG DOORS
- SHOP DOORS
- BARN DOORS
- AVIATION

**HYDRAULIC**  
**“One-Piece” DOOR**  
 OR  
**BIFOLD**  
**STRAP LIFT**  
**and auto latch**

**One-Piece**  
**...Lift Straps**

The Door Leader **SCHWEISSDOORS.com**

Circle Reader Service #414

**TRI-STATE LUMBER CO.**  
 Fulton, Mississippi [www.homanindustries.net](http://www.homanindustries.net) (662) 862-2125

**POST FRAME CONSTRUCTION**  
 4x4, 4x6, 6x6, 6x8, 8x8, 10x10, 12x12  
 We specialize in Long Timbers Treated CCA

**CUSTOM SAWN LUMBER**  
 3x8, 3x10, 3x12, 4x8, 4x10, 4x12  
 Most dimensions up to 40 feet long

**FENCING & POST**  
 1x6, 2x6, Round & Square Post Treated  
 Full Inch Corral Boards Cut 12, 14, 16 feet

**REMANUFACTURING**  
 Precision End Trimming, Dadoing, Drilling  
 No job too big or too small

**T&G CENTER MATCH**  
 2x6, 3x6, 4x6, 2x8, 3x8, 4x8  
**V-JOINT**  
 2x6, 3x6, 2x8, 3x8

**Quality Quick Shipping Fair Pricing**

SUSTAINABLE FORESTRY INITIATIVE Good for you. Good for our forests.  
 AntiBlu  
 CA-C  
 WOLMANIZED PREMIUM REBUILT WOOD

Circle Reader Service #576

# KNOW A CREW FOREMAN WHO DESERVES RECOGNITION?

NFBA members can nominate their most loyal and hard-working project leaders for the **Crew Foreman of the Month award**, which includes a cash prize and a *Frame Building News* article featuring the winner.

All monthly winners are automatically nominated for the prestigious Crew Foreman of the Year award, which is presented at the annual Frame Building Expo Awards Luncheon and comes with an even larger cash prize!

Learn more at [nfba.org/awards](https://nfba.org/awards)

The Crew Foreman of the Month and Crew Foreman of the Year awards are sponsored by American Building Components.



# expo in review

BY RURAL BUILDER STAFF



**1.** Safety speaker Dave Malcomson, Capital Safety, Red Wing, Minnesota, offered instruction to builders on the trade show floor. It included some hands-on how-to for the proper use of safety equipment.

**2.** You Tube favorites Aaron Gray and Josh Arnett, known as The Singing Contractors, surprised guests at the annual meeting and keynote event with a couple of gospel songs. The builders, who hail from the Hoosier state, later toured the trade show floor.

**3.** Attendance at the Expo was up at Indianapolis compared to 2015 when it was held in snow-locked Louisville. This scene is from opening day.

**4.** To prove his point on the value of teamwork, workshop speaker Bruce Hodes had participants lift a hoop, each balancing it with one finger.

## ROUND TRACK

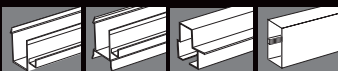
YOU'RE ON THE RIGHT TRACK WITH **WESTERN**™



600-lb. capacity, smooth, easy gliding round track. Self-cleaning design, corrosive resistant 14 gauge galvanized construction.

(800) 553-5142 [www.westernproductsinc.com](http://www.westernproductsinc.com)

ALSO FROM WESTERN: 1½" + 3½" SLIDING ALUMINUM DOOR FRAMES



**WESTERN**™  
PRODUCTS OF INDIANA

Circle Reader Service #374

# Be part of the 2016 Rural Builder **Source Book!**



**Do you have a project  
or product to share?**  
Show everyone what you can do!

In addition to advertising opportunities, the Source Book offers a great opportunity to show everyone what you can do as a builder or supplier. If you have a nice project or building product you'd like considered for inclusion, we're looking for finished post frame and metal building projects, as well as the products used in the making of those buildings. If your project or product makes it into the magazine, you'll have bragging rights for all your promotional materials!

**Put your products  
where the industry  
looks for the latest  
ideas.**

The annual *Rural Builder Source Book* is a comprehensive guide that builders, contractors and architects use throughout the year to review leading post frame and metal building projects as well as the products and manufacturers that make them possible.

It's an ideal environment to present your products and sales message because it's a resource that industry professionals rely on for ideas and suppliers of products that they can use for their own work. As the Source Book is used again and again throughout the year, your ad will be there to tell builders why your products are best for the operations.

**For advertising opportunities contact**

**Tyler Jenson; 800-726-9966 (Ext. 13322)**  
[tyler.jenson@fwcommunity.com](mailto:tyler.jenson@fwcommunity.com)

**Gary Reichert; 800-726-9966 (Ext. 13381)**  
[gary.reichert@fwcommunity.com](mailto:gary.reichert@fwcommunity.com)



**For editorial opportunities  
contact [sharon.thatcher@fwcommunity.com](mailto:sharon.thatcher@fwcommunity.com),  
800.726.9966 ext. 13644.**

The *Rural Builder Source Book* is published by the team at Rural Builder and mailed to its 29,000 subscribers.

**Rural  
Builder**

**Call today! Space Reservation Deadline: July 22, 2016**

## project feature

BY SHARON THATCHER

# The aviator cabin

Illinois airport offers unique hangar retreats for pilots

**CROSS A PLANE HANGAR WITH A MAN CAVE AND THE AVIATOR CABIN IS BORN.** It's a concept gaining altitude at the privately-owned Popular Grove Airport northeast of Rockford, Illinois.

Jim Peters, owner of Freeport Builders (1998 inductee of the *Rural Builder* Hall of Fame), led his team of Wick builders from bid through completion of the project. It comprises a 51x316 foot post-frame building with six plane hangars accompanied by six spaces available for customized lofts.

*Rural Builder* readers may remember Peters and Popular

---

Subcontractor Gary Borgmann is shown working on the frame-outs for the six PowerLift doors.



Popular Grove Airport started in 1972 on converted farm land and continues to evolve. This new building is being prepped for aviator cabins.

Grove from a 2004 cover story we featured on a seven-building, 58 hangar project at the privately-owned airport. At the end of that article, the owner, Steve Thomas, was quoted as saying: “We’ll complete these, chill out for a couple years, let demand get really strong, then take it up another level...”

The aviator cabins are a step up to the next level.

The new building is designed to appeal to people who live elsewhere but want a place to escape on weekends to be with their planes and fellow hobbyists.

“They’ll basically take a corner of their unit and build a stairs up to the loft or ‘cabin,’” Peters explained. “Each unit is 51 feet wide by 60 feet long by 18 foot high.”

Individual living quarters are about 800 square feet. Future owners will finish off the space to suit their own needs and tastes.

Peters, who started the project late last summer and finished in early fall, said it went smoothly. “There really were no glitches,” he said, attributing part of that to his previous experience working with Thomas, who serves as his own general contractor and has his own crews do much of the preparation work on job sites.

There was one new element on the project, however, and that was working for the first time with a different hydraulic door company. That too went well.

“On the south side of the building, the entire wall has six, 54-foot wide by 14-foot high PowerLift doors, each with 48-inch by 58-inch windows. We had to provide the face steel, and the trim and steel in between the doors. I knew that no matter what I did, if I ordered it at the same time as the building, I’d be wrong. I’ve paid for my education once, I don’t need to do it again, so the day the doors arrived, I met with my lead foreman and we took measurements. Wick cut the steel and provided the trim and my subcontractor went to Wick to pick it up on his gooseneck trailer four days later. Three days after that we had all the doors installed,



Individual living quarters are about 800 square feet. Future owners will finish off the space to suit their own needs and tastes.

PEEL IT. SEAL IT.
DONE!

**Peel & Seal®** is the original self-adhering waterproofing membrane designed for low slope roofing or flashing applications. This single-ply membrane applies directly to the roof deck and serves as the final roofing surface. Ideal for hundreds of applications including whole roofs, dormers, sunrooms, metal roofs, and flashing around exterior penetrations.

**mfm** BUILDING PRODUCTS CORP.  
800-882-7663 | [www.mfmbp.com](http://www.mfmbp.com)

- Ideal for difficult roofing applications
- Aggressively adheres to the roof deck
- Self-seals around fasteners
- Aluminized surface limits solar gain
- Easy handling and installation
- Requires no coatings or coverings for permanent exposure to sunlight
- Virtually maintenance-free
- Variety of widths and color options
- 10-year limited warranty
- Made in the USA

Circle Reader Service #412

## project feature

BY SHARON THATCHER

lined and insulated. I'd say that was a terrific accomplishment."

The new building joins Popular Grove's variety of options for flying enthusiasts: an exclusive airpark residential community (Bel Air Estates), a museum (Vintage Wings and Wheels), a flight school and a variety of hangar options that house more than 400 planes.

For more about the Poplar Grove project, including the 2004 article in *Rural Builder*, go to [RuralBuilder.com](http://RuralBuilder.com). **RB**

---

Jim Peters, owner of Freeport Builders (right) confers with subcontractor Gary Borgmann on the project's materials list which is written on a 2x4, the quintessential "carpenter's note pad."



Look for the updated  
**RURAL BUILDER  
BUYERS' GUIDE**  
in the October issue  
of Rural Builder!

### SUPPLIERS:

Last chance for listing your products!  
If you offer products or services to the town  
and country builder, list your business.

### CONTACT YOUR SALES REP FOR MORE INFORMATION:

Tyler Jenson; 800-726-9966 (Ext. 13322)  
[tyler.jenson@fwcommunity.com](mailto:tyler.jenson@fwcommunity.com)  
Gary Reichert; 800-726-9966 (Ext. 13381)  
[gary.reichert@fwcommunity.com](mailto:gary.reichert@fwcommunity.com)

Deadline for listings **September 16!**

# METALCON

A FUTURE BUILT BY HAND

SPONSORED BY:



PRODUCED BY: **PSMJ** | Resources, Inc.®

OCTOBER 26 - 28 • 2016

BALTIMORE • MD • USA

Circle Reader Service #331

[WWW.METALCON.COM](http://WWW.METALCON.COM)

## project feature

BY SHARON THATCHER

Right: The project is complete and Jim Peters can stand back and enjoy the ride. Below: The completed six-plane hangar with space for small living quarters above.



Post-frame construction was a perfect fit for the Poplar Grove hangar cabins because the large open space provided by the clearspan trusses allowed for adding some living space on a second level. All photos courtesy of Wick Buildings

# DO NOT READ THIS.

## DON'T EVEN LOOK UNLESS YOU'RE A RURAL BUILDING PRO!

We're only looking for professionals working in the rural construction industry because that's all we are about. Each issue of *Rural Builder & Frame Building News* magazine delivers news and information created expressly for the rural construction industry. Post-frame building isn't a topic that we "cover" a couple of times a year. It's our focus in every issue so if you're not building, repairing or replacing rural buildings there's no reason for you to subscribe.

If you are a rural construction professional, these magazines are a resource you can use to help build your business. Every issue will help you and your team stay abreast of the latest products and components for the work you're doing. You'll also read about the best practices leading contractors are using to improve their productivity and profitability. Plus, a lot more! The best part about these magazines is that they are all free if you're a rural building professional. **To subscribe, go to [www.constructionmagnet.com/subscribe](http://www.constructionmagnet.com/subscribe).**



# Rural Builder

## FRAME BUILDING NEWS

## project feature

BY RURAL BUILDER STAFF

# This project used foam for backfill

Subsoil support system is well known in heavy civil construction

**HOW TO COST-EFFECTIVELY NESTLE A BUILDING INTO A HILLSIDE WAS A PROBLEM FACING PETER SHERRER**, owner of PSG, a Wisconsin based firm specializing in real estate and construction. The building in question was a new 55,000 square foot office and distribution center for Wisconsin Vision Associates of Burlington.

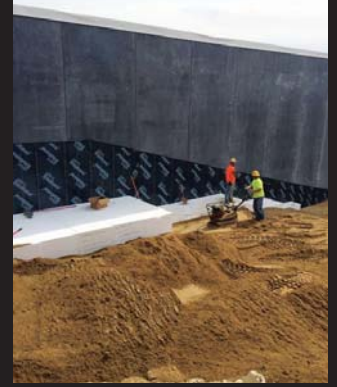
Early design investigations into different structural engineering systems capable of supporting both the building's pre-cast wall panels and the weight of the hillside were cost prohibitive until the structural engineer suggested the possibility of using Foam-Control EPS Geofoam, a cellular plastic material from ACH Foam Technologies.

"By using the EPS Geofoam as the fill material, we were able to significantly reduce the lateral and bearing loads of the hill on the structure," said Scherrer.

The foam is about one-percent the weight of traditional earth materials. It has a high compressive resistance up to 18.6 psi at one-percent deformation. Lightweight and extremely easy to install using non-specialized labor, the construction team on the project assembled more than 470 cubic yards in just three days.

PSG was able to work with the sales and engineering teams at ACH to define the exact number and sizes of Geofoam pieces, which were delivered to the site pre-cut in the order needed. From there the earthwork contractor, Wanasek Corporation, was able to move the foam blocks into place by hand, stacking and assembling them in the specified order without much effort.

A spokesman for the project said that while this subsoil support component has been a staple of heavy civil construction, general contractors in the vertical construction market are just beginning to realize the benefits. **RB**



160 DOORS & WINDOWS

NEW One-Piece 800-746-8273

# DOORS

AG DOORS  
SHOP DOORS  
BARN DOORS  
AVIATION

Say YES... to Strap-Lift Doors  
Say NO to Cable Lift

HYDRAULIC OR BIFOLD  
"One-Piece" DOOR STRAP LIFT and auto latch

**SCHWEISSDOORS.com**

...Lift Straps

**Doors built for a lifetime.**

- EVERY DOOR BUILT, DELIVERED AND INSTALLED BY LOCAL PROFESSIONALS
- LIFETIME STRUCTURE WARRANTY
- SAFE, STRONG & WEATHERTIGHT
- ZERO MAINTENANCE
- NO LOST HEADROOM
- NEW OR EXISTING BUILDINGS



**POWERLIFT**

HYDRAULIC DOORS™

855-368-9595 www.PowerLiftDoors.com

400 ROLL FORMERS



**MARION MANUFACTURING**

- Automation Systems
- Metal Construction Rollformers
- Coil Processing
- Forming & Fabrication
- Recondition Existing Machines

**WE ADD THE VALUE TO METAL**

1-888-865-8740 www.marionmanufacturing.com



**Acu-Form**  
ROLL FORMING EQUIPMENT

- Ag Panel
- Post Cut Shear
- Pre Cut Shear
- Uncoiler
- Slitter
- Hemmer
- Trim Rollformer
- Wrapper
- Upender
- Perforator

**We use D2 tool steel as a standard.**

Phone (330) 674-4003 Fax (330) 674-4035

400 ROLL FORMERS




**BRADBURY**  
THE BRADBURY CO., INC.

**We Build Machines...  
We Sell Solutions**

Panel Lines	Ridge Cap Benders
Standing Seam Lines	Insulated Panel Lines
Control Retrofits	Portable Roll Formers
Trim Roll Formers	Hemming Roll Formers
Hydraulic Folders	Slit & Recoil Lines
Garage Door Lines	Purlin Lines


620.345.6394 www.bradburygroup.com



**MRS**  
METAL ROLLFORMING SYSTEMS

**The Affordable Rollforming  
Equipment Manufacturer**

- Single & Double Deck Rollformers
- Trim Rollformers
- \*NEW\* Patriot Rollforming Line
- Coil Reels
- Precision Cut Slitting Lines
- Sheet Stackers
- Coil Upenders
- Ridge-Cap Press



1.888.284.6794 www.mrsrollform.com

600 TOOLS/EQUIPMENT DISTRIBUTOR

**Make Your Own Nail-Lam Column**



**BIG RED III**  
Total Fabricating System

Ph: 605-787-4765  
Email: jimsemmler1@msn.com  
www.semmlerinc.com

**Your One Stop Shop**



**Clark Industries, Inc.**  
Since 1967 - Monett, Missouri



Considering equipment?  
Consider Clark.

- Roof & Floor Truss Presses
- Multi-Head Truss Presses
- Modular Truss Presses
- Shuttle Presses
- Jack Presses
- H.D. Chord Splicers
- Post & Column Machines
- Floor Truss Machines
- Electric Horizontal Stackers
- Electric Peak-up Stackers
- Conveyor Systems
- Custom Machinery

Call us toll free at: 800.743.9727  
or visit us on the web at: www.clark-ind.com

## APA Video Tips and Topics

APA, the Engineered Wood Association is reporting strong interest in its new series of short online "Video Briefs" that address key construction tips and topics. They are available for free viewing on the Association's website (apawood.org) and YouTube channel from desktop platforms or mobile devices.

Titles include: Prevent Buckling with Proper Spacing; Simplified Wall Bracing; *Four Steps to Code-Compliant Walls*; *Wall Bracing: Satisfy the Code with Strong, Resilient, Fully Sheathed Walls*; *Advanced Framing: Meet Structural Code and Energy Requirements*; *Inside Advanced Framing: How to Build Energy-Saving Homes*; *Inside I-Joist Floors: Improve Performance with Thicker Sheathing and Deeper I-Joists*; and *Energy Star Home Certification: Advanced Framing Techniques for Comfortable, efficient homes.*

BY RURAL BUILDER STAFF

## ■ METALCON plans underway

The 2016 METALCON heads to Baltimore this year, October 26-28.

For the first time, METALCON attendees can take a two-day Metal Roofing Installation Training Program and earn a MCA Metal Roof Training Certificate of Completion.

The training program will be based on the recently published *Metal Roof Installation Manual*, developed by Metal Construction Association. The program will train installers who want to get into the metal roofing industry by offering practical training in basic topics.

Every year the METALCON team designates a local charity for giving. This year it will exclusively support America's Fund, a non-profit organization committed to providing support ill or injured veterans of the U.S. Armed Forces.

## ■ MBMA releases Environmental Product Declarations for metal building systems

The Metal Building Manufacturers Association (MBMA) has released Environmental Product Declarations (EPDs) for three metal building product categories: primary rigid framing, secondary framing, and metal cladding for roofs and walls.

MBMA partnered with UL Environment to develop and certify these EPDs, which summarize the cradle-to-gate environmental impacts of a metal building system. The cradle-to-gate method is used to describe the impact of producing products, from raw material extraction through processing, fabrication and up to the finished product leaving the manufacturing facility.

## ■ National Framers Council rolls out FrameSafe Version 2 Safety Program

The National Framers Council (NFC) continues its work to develop and implement best practices to help ensure framers leave the job site each day in the same health as they arrived.

Organized in June of 2013 as a council of the Structural Building Components Association, the NFC just released its second edition *FrameSAFE Safety Manual Template (A Bilingual Guide for Safety on the Jobsite)*, a resource for framers to create their own OSHA-compliant safety program.

The second edition includes four new modules covering Proper Use of Extension Cords, Avoiding Electric Shock, Horizontal Lifelines and Rescue Planning.

In addition to the updated manual, FrameSAFE has a revised Orientation Checklist and Site-Specific Fall Protection Plan Template, five new Toolbox Talks and three new AHA templates.

The program requires a subscription, based on member-class levels. For more information visit framerscouncil.org.

## ■ MCA Enhances Technical Resources Section On Website

It is now easier for architects, contractors and building managers looking for technical assistance to access a wealth of metal construction resources on the Metal Construction Association's (MCA's) website at metalconstruction.org.

The MCA has reorganized more than 25 technical resources that are available for free download.

Categories include metal roofing, metal walls, insulated metal panels and an "other" category, which includes resources related to metal roof and metal wall components, fastening tools, life cycle assessments, roll forming and more.

# 05/

## MAY

**10-11**, Metal Building Manufacturers Association Spring Meeting, Fort Worth, TX; [mbma.org](http://mbma.org)

**19-21**, American Institute of Architects National Convention & Expo, Philadelphia; [aia.org](http://aia.org)

# 06/

## JUNE

**1-3**, International Reflective Insulation Manufacturers (I-RIM) Conference, Hollywood Beach, FL; [rima.com](http://rima.com)

**5-7**, Western Roofing Expo 2016, Las Vegas, NV; [wsrca.com](http://wsrca.com)

# 09/

## SEPTEMBER

**15-18**, American Society of Concrete Contractors Annual Conference, Minneapolis, MN; [asconline.org](http://asconline.org)

**25-30**, Northwestern Lumber Association 2016 Colorado Mill Tour. 763.595.4058; [jfleck@nlassn.org](mailto:jfleck@nlassn.org)

# 10/

## OCTOBER

**26-28**, METALCON 2015, Baltimore, MD. [metalcon.com](http://metalcon.com)

# Some things should twist & bend...



## NOT windows.

**Thinking of vinyl? Think again.**

Plyco and Andersen have something better to offer our builders. **Introducing 100 Series Windows made with Fibrex® material**—a revolutionary composite material that is stronger, more beautiful and environmentally responsible.

If you're considering building with vinyl windows, consider this:

- 100 Series windows are **paintable**  
—*vinyl windows are not.*
- 100 Series windows **hold their form**  
—*vinyl windows warp and twist.*
- 100 Series windows are **ENERGY STAR® rated, green, and LEED qualified.**
- 100 Series windows are **twice as strong as vinyl.**
- 100 Series windows **will not fade, flake, blister, chalk or peel**  
no matter what the climate.

**Contact your Plyco dealer today to learn more about this exciting new product from two leaders in the industry.**

**PLYCO**  
CORPORATION

Andersen WINDOWS • DOORS 

800.558.5895 | Fax: 800.257.5926  
www.plyco.com | Elkhart Lake, Wis.

Circle Reader Service #313



# DESIGNED FOR YOU. DESIGNED TO LAST.



## Sukup<sup>®</sup>

STEEL BUILDINGS

*An industrial strength building that's customizable, built to last,  
and virtually leak-proof...*

*Now THAT'S a Solution<sup>™</sup>!*

The clear span design of a Sukup Steel Building allows you to customize your building to fit your specific requirements. Whether you need an agricultural building to house livestock, materials, or large machinery, or you are looking for an industrial or commercial structure, you can have it with a Sukup Steel Building.

The seams on Sukup standing seam roofs are mechanically rolled in the field to create a 360° Pittsburgh double lock seam. This seam creates a tight, durable, virtually leak-proof seal. Economical screw-down roofs are also available.



[www.sukup.com](http://www.sukup.com) ■ [info@sukup.com](mailto:info@sukup.com) ■ Sheffield, IA 50475-0677 ■ 641-892-4222

Circle Reader Service #345