

# Rural Builder

## SOURCE BOOK

eight

August 2016 • Volume 50, Issue 5

# 8

Cutting-edge ideas to inspire your  
next **construction innovations**



# TWO POINTS TO TIE?



## Some Things Work Better in Threes



THE NEXT GENERATION AZM® steel with Activate Technology is now more corrosion resistant than ever. Original Galvalume® steel is protected by an alloy coating of zinc and aluminum. However, Everlast Roofing's AZM® steel introduces magnesium into the zinc-aluminum coating to improve galvanic protection by "activating" the aluminum. The result is more efficient and more effective corrosion resistance. [LEARN MORE AT EVERLASTROOFING.COM](http://EVERLASTROOFING.COM).



**Everlast  
Roofing, Inc.**

OUR NAME SAYS IT ALL [everlastroofing.com](http://everlastroofing.com) 888.339.0059

Circle Reader Service #407



**Vice President/Group Publisher**  
Jamie Wilkinson

**Publisher/VP Advertising Sales**  
Dave Davel

**Editor**  
Sharon Thatcher  
sharon.thatcher@fwcommunity.com  
715-445-2214, ext. 13644

**Advertising Sales**  
Gary Reichert  
gary.reichert@fwcommunity.com  
715-445-2214, ext. 13381

Tyler Jensen  
tyler.jensen@fwcommunity.com  
715-445-2214, ext. 13322

**Publication Design**  
Nicole MacMartin

**Production Coordinators**  
Kathy Budsberg  
kathy.budsberg@fwcommunity.com  
715-445-2214, ext. 13309

Patti Kirchner  
patti.kirchner@fwcommunity.com  
715-445-2214, ext. 13319

**Subscription Services**  
386-246-3452

**Office Phone**  
715-445-2214

**Office Fax**  
715-445-4087

**F+W, A CONTENT + ECOMMERCE COMPANY**

**CEO** Thomas F.X. Beusse

**CFO** James L. Ogle

**COO** Joe Seibert

**SVP, Operations** Phil Graham

**SUBSCRIPTION SERVICE**

Subscription inquiries, orders and address changes can be made at [constructionmag-net.com](http://constructionmag-net.com) (click on "Subscribe"). Or by mail: Rural Builder, P.O. Box 421751, Palm Coast, FL 32142-1751. Or call (866)805-1574, International (386)246-3452

Rural Builder (ISSN: 0888-3025) Volume 50 Number 5 is published monthly, except January, April, June and November, by Krause Publications, a division of F+W Media, Inc., 700 E. State Street, Iola, WI 54990-0001. Periodical postage paid at Iola, Wis., and at additional mailing offices. Canadian Agreement Number: 40665675. POSTMASTER: send address changes to Rural Builder, Circulation Department, PO Box 420235, Palm Coast, FL 32142. Copyright 2014 by F+W. Rural Builder and its logo are registered trademarks. Other names and logos referred to or displayed in editorial or advertising content may be trademarked or copyright. Rural Builder assumes no responsibility for unsolicited materials sent to it. Publisher and advertisers are not liable for typographical errors that may appear in prices or descriptions in advertisements. Mailed free to rural contractors and their suppliers throughout North America. Others may subscribe: \$29.98 for 1 year, \$55.98 for 2 years, and \$79.98 for 3 years in the U.S.; \$39.98 for 1 year, \$74.98 for 2 years in Canada.



Welcome to the  
**SOURCE  
BOOK** eight



In this issue of *Rural Builder* we take great pride in offering a look at some of special post-frame and metal buildings that have come to typify the evolving world of today's rural builder. It's our annual *Rural Builder Source Book*: a magazine of the special projects and all the products that go into them. We hope you can take some time out of your busy day to take a look. Keep this issue at your desk for future reference. Use the information on products to further your own goals to build today the best buildings of tomorrow.

-The Editors

## TABLE OF CONTENTS

### PROJECTS

- |    |   |    |  |
|----|---|----|--|
| 4  | <b>RETAIL BUILDING</b><br><i>from Fabral</i>                    | 20 | <b>OFFICE AND MINI-STORAGE</b><br><i>from Trachte Building Systems</i> |
| 6  | <b>FIRE STATION</b><br><i>from Petersen Aluminum</i>            | 22 | <b>VINEYARD STORAGE BARN</b><br><i>from Valspar</i>                    |
| 8  | <b>AIRCRAFT HANGAR</b><br><i>from Sukup Steel Buildings</i>     | 23 | <b>HEALTHCARE &amp; SPORTS FACILITY</b><br><i>from Urestone</i>        |
| 10 | <b>DOG PARK PAVILION</b><br><i>from Quality Structures Inc.</i> | 24 | <b>CHURCH AUDITORIUM</b><br><i>from Metal Sales Manufacturing</i>      |
| 12 | <b>DINING AND CONFERENCE HALL</b><br><i>from Varco Pruden</i>   | 25 | <b>WAREHOUSE</b><br><i>from Schweiss Doors</i>                         |
| 14 | <b>AIRCRAFT HANGAR</b><br><i>from Graber Post Buildings</i>     | 26 | <b>AIRCRAFT HANGARS</b><br><i>from Erect-A-Tube</i>                    |
| 18 | <b>EVENTS CENTER</b><br><i>from Armstrong Steel Buildings</i>   | 20 | <b>WINERY</b><br><i>from Wick Buildings</i>                            |

### PRODUCTS

- |    |   |    |  |
|----|---|----|--|
| 28 | <b>BUILDING SYSTEMS<br/>(POST FRAME, METAL, FABRIC)</b> | 49 | <b>UNDERLAYMENT</b>                      |
| 30 | <b>FASTENERS (NAILS, SCREWS,<br/>ROOF CLAMPS)</b>       | 50 | <b>SNOW MANAGEMENT</b>                   |
| 35 | <b>ADHESIVES, SEALANTS &amp; CAULKS</b>                 | 50 | <b>WIND UPLIFT CONTROL</b>               |
| 37 | <b>DOORS AND DOOR HARDWARE</b>                          | 51 | <b>POSTS AND FOUNDATION<br/>PRODUCTS</b> |
| 39 | <b>SKYLIGHTS &amp; DAYLIGHTING</b>                      | 52 | <b>TRUSSES AND TRUSS PRODUCTS</b>        |
| 41 | <b>WINDOWS</b>  | 52 | <b>INSULATION</b>                        |
| 44 | <b>CUPOLAS</b>  | 52 | <b>VENTILATION</b>                       |
| 46 | <b>ROOF &amp; WALL PANEL</b>                            | 54 | <b>MOISTURE/VAPOR BARRIERS</b>           |
| 47 | <b>RETROFIT</b>   | 54 | <b>PROTECTIVE COVERS</b>                 |
| 48 | <b>COIL AND COIL PAINT/COATINGS</b>                     | 54 | <b>EQUIPMENT</b>                         |
|    |   | 58 | <b>FALL PROTECTION</b>                   |

42 AD INDEX

56 CLASSIFIED ADS

Cover photos courtesy of: (top to bottom) Fabral, Petersen Aluminum, Valspar, Trachte Building Systems. Design by Nicole MacMartin.

# INCREASE PROFITABILITY: INVEST IN TRAINING

Keeping on top of new product development and proper installation procedures is vital to the growth and success of any metal industry business. As a former installer, I understand that avoiding repairs related to improperly selected or installed products is essential to the profitability of your business.

While metal panel systems are not complicated, basic principles and practices must be followed to achieve a weathertight installation and create satisfied customers. As a training manager and engineer, my goal is to educate customers to avoid costly mistakes. Unfortunately, there are many metal wall panel and roof system installers, sales and support staff who lack the knowledge needed to select and install these systems. Expensive problems related to lack of knowledge occur all too frequently; every day, I help customers resolve problems that could be avoided.

Product knowledge is also critical for sales and support, allowing businesses to speak authoritatively and recommend the best solutions for any given project.

Lastly, given today's near-instant communication, revenue growth depends on positive word of mouth from satisfied customers. Studies show that positive customer testimonials produce a high level of trust, particularly with expensive products that customers can't easily touch and feel. Getting the job done right the first time creates and maintains the reputation your business needs.

Visit [www.Fabral.com/tech-center/](http://www.Fabral.com/tech-center/) for product information, live chat tech support and training that helps you succeed.

**TIP OF THE MONTH:** Avoid using graphite pencils when marking metal panels. A chemical interaction can cause premature corrosion.

## BY MARK MULLINS, FABRAL

Applications Engineer  
Product Training Manager



## RETAIL BUILDING

Fabral

[www.fabral.com](http://www.fabral.com)

•••

Race Pace Bicycles in Ellicott Center, Maryland, proves that functional, hardworking, light-industrial projects don't have to look boring. A family company since 1978, Race Pace Bicycles expanded its operation to a new city, and created a bright, fresh façade using a metal panel system that echoes metal bicycling components in a functional and fun way.

Fabral Silhouette HCFTM (horizontal concealer fastener) panel system creates visual excitement appropriate to the premium bicycles and customer service it provides to area bike lovers. This versatile panel system has been successfully used on healthcare, education, athletic, office and retail settings.

► For more product information from **FABRAL** circle 101.

**LOCATION:**  
Ellicott Center, Maryland

**EXTERIOR PANEL:**  
Fabral Silhouette HCFTM

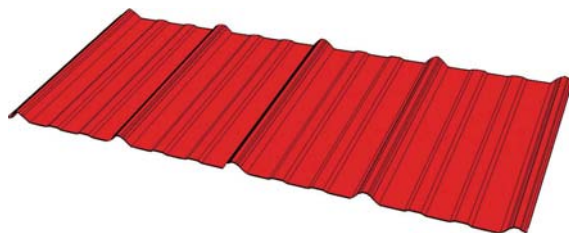
# BUILD WITH FABRAL. BUILD WITH CONFIDENCE.



## Stand Out on Every Project.

For nearly half a century, Fabral metal wall panel and roof systems help create stand-out buildings like this one that remain strong year after year. Here, Grandrib 3<sup>®</sup> sets the industry benchmark, offering premium substrate, traditional lines and outstanding wind uplift and snow load ratings. Suited for commercial, agricultural or residential structures, this is an investment that will last.

Call us when you're ready to exceed customer expectations.



**FABRAL**  
METAL WALL AND ROOF SYSTEMS

800-477-2741  
Fabral.com



POST FRAME | RESIDENTIAL | LIGHT COMMERCIAL | ARCHITECTURAL

Circle Reader Service #393



# FIRE STATION

Petersen Aluminum

[www.pac-clad.com](http://www.pac-clad.com)



After literally two decades in the planning, the new Iowa City, Iowa, Fire Station #4 is complete and providing improved service to the northeast section of the city. Located on a high-visibility site, the LEED Gold facility establishes a prominent visual presence for the fire department in the center of the service area. According to Will Downing, project architect, “metal provided design flexibility for the roofs and walls plus good durability and economy. Our office uses metal on a regular basis because of its inherent capabilities and visual appeal.” The fire station is expected to play a role in promoting development in the area. “The city and the fire department both wanted a ‘stand-out’ design to be seen by people as they enter from the northeast,” said Downing. “The new station definitely provides a nice anchor for the community.” Approximately 18,000 square feet of PAC-CLAD material in three different profiles were utilized to meet design objectives.

► For more product information from **PETERSEN ALUMINUM** circle 102.

**LOCATION:**

*Iowa City, Iowa*

**ARCHITECT:**

*Will Downing, Rohrbach Associates PC, Iowa City, Iowa*

**SIZE:**

*11,300 sq. ft.*

**CONTRACTOR:**

*Modern Builders Inc., Janesville, Iowa*

**EXTERIOR PANEL:**

*13,815 sq. ft. of 24 gauge Tite-Loc curved, tapered and straight panels; 2,520 sq. ft. of .032 aluminum PAC-750 soffit panels; and 1,600 sq. ft. of PAC-3000 AP aluminum plate panels*

# Smooth Operation

## Jefferson County Western Health Center, Midfield, AL

Owner: Jefferson County Department of Health  
Architect: Birchfield Penuel & Associates, Birmingham, AL  
General contractor: M.J. Harris Construction Services, Birmingham, AL  
Installing contractor: CSC Roofing, Birmingham, AL  
Profiles: Tite-Loc curved, Reveal Wall Panels  
Colors: Cardinal Red, Sierra Tan



"The products are easy to work with and you get great customer support from the factory. Everything goes much smoother using Petersen."

Mark Ryan, project manager, CSC Roofing



**REVEAL**

Sierra Tan - Energy Star - Cool Color



**TITE-LOC**

Cardinal Red - Energy Star - Cool Color

CASE STUDY



[PACGREENINFO.COM](http://PACGREENINFO.COM)  
YOUR GREEN METAL RESOURCE



**PAC-CLAD**

P E T E R S E N

PAC-CLAD.COM | IL: 1 800 PAC CLAD | MD: 1 800 344 1400 | TX: 1 800 441 8661 | GA: 1 800 272 4482 | MN: 1 877 571 2025

Circle Reader Service #485



# AIRCRAFT HANGAR

Sukup Steel Building

[www.sukup.com](http://www.sukup.com)



North Iowa Air Services needed more space for its growing business and wanted to be able to rent out space as well, so they erected this 11,400 square foot aircraft hangar in Mason City, Iowa. This Sukup Steel Building features a custom curved-roof design and clearstory windows for an ample amount of natural light. The 80x22 foot bi-fold door provides access to virtually any aircraft that frequents the regional airport. This building

also features the strength and beauty of Sukup standard sidewalls with wainscot accent panels, and the energy efficiency of a Saver System fiberglass insulation package. Additionally, the radiused standing seam roof provides a durable, weathertight seal.

► For more product information from **SUKUP STEEL BUILDINGS** circle 103.

**LOCATION:**  
*Mason City, Iowa*

**SIZE:**  
*11,400 sq. ft.*

**CONTRACTOR:**  
*Henkel Construction Company, Mason City, Iowa*

# DESIGNED FOR YOU. DESIGNED TO LAST.



## Sukup®

STEEL BUILDINGS

*An industrial strength building that's customizable, built to last,  
and weather-tight... Now THAT'S a Solution™!*

The clear span design of a Sukup Steel Building allows you to customize your building to fit your specific requirements. Whether you need an agricultural building to house livestock, materials, or large machinery, or you are looking for an industrial or commercial structure, you can have it with a Sukup Steel Building.

The seams on Sukup standing seam roofs are mechanically rolled in the field to create a 360° Pittsburgh double lock seam. This seam creates a durable weather-tight seal. Economical screw-down roofs are also available.



[www.sukup.com](http://www.sukup.com) ■ [info@sukup.com](mailto:info@sukup.com) ■ Sheffield, IA 50475-0677 ■ 641-892-4222

Circle Reader Service #345

**LOCATION:**

*Kansas City, MO.*

**SIZE:**

*20x60x11*

**CONTRACTOR:**

*Quality Structures Inc.*

**EXTERIOR PANEL:**

*26 Ga. Imperial Rib  
by ABC*

**INSULATION:**

*R-19 Batt Insulation.  
WeatherWrap Micro foil  
by NOFP*

**VENTILATION:**

*Univent II ridge vent,  
Raft R Mate Attic  
Baffles by Owens  
Corning*

**FASTENERS:**

*HWH Ultra Z screws  
with washer by Atlas*

**SNOW GUARDS:**

*SnoBlox Deuce*

**OTHER FEATURES:**

*Fourteen 2x4 Velux  
Truss series skylights;  
barrel vault trusses  
with T&G liner; three  
commercial front glass  
doors; partially-  
enclosed, steel-lined  
dog washing station.*



## DOG PARK PAVILION

Quality Structures Inc.

[www.qualitystructures.com](http://www.qualitystructures.com)



When Kansas City area animal rescue shelter, Wayside Waifs, needed a pavilion for its new Bark Park they turned to Quality Structures Inc. This structure features an open pavilion with barrel vault trusses lined with T&G. The enclosed portion brings the outdoors in with 14 skylights. The structure also includes a partially-enclosed, steel-lined wash station.

► For more information from **QUALITY STRUCTURES INC.** circle 104.

**100%**  
**MADE IN THE USA**



MAZE is the only nail manufacturer that can make that claim!

# Roofing Nails



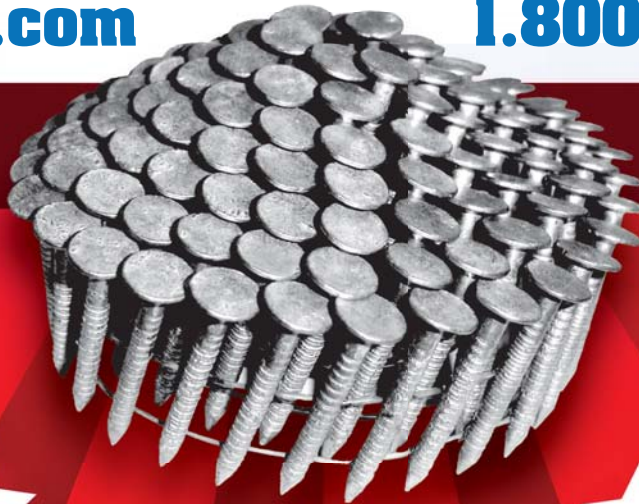
- ★ MAZE double hot-dipped galvanized ring shank roofing nails are **Miami-Dade County Approved!**
- ★ MAZE roofing nails are available in hand drive and coils for easy application!
- ★ MAZE roofing nails are available in both double hot-dipped galvanized and stainless steel!

[mazenails.com](http://mazenails.com)

**1.800.435.5949**

Miami-Dade County, Florida  
Notice of Acceptance (NOA)

NOA Number: 16-0712.06  
Expiration Date: 8/17/21





# DINING AND CONFERENCE HALL

**Varco Pruden**

[www.vp.com](http://www.vp.com)



Nestled on 2,000 acres of pristine wilderness in the San Bernardino Mountains is Pali Adventures Summer Camp for children. Site of one of the area's largest construction projects in recent years, it included 12 new 1,000-square-foot cabins as well as this two-story dining hall and multi-purpose recreation center engineered by Varco Pruden. Pence Construction Inc. received a 2016 Hall of Fame Award from VP for the project.



**LOCATION:**

*Pali Mountain Dining Hall,  
Running Springs, California*

**METAL BUILDING SYSTEM:**

*Varco Pruden pre-engineered steel building*

**SIZE:**

*24,000 sq. ft., 2-story*

**CONTRACTOR:**

*Pence Construction Inc.,  
Redwood, California*

► For more product information from **VARCO PRUDEN** circle 105.

*The building suppliers you can trust focus on*

## BUILDING STRONG RELATIONSHIPS.



The most solid foundation upon which to build a partnership is trust. That's why, for more than 60 years, Varco Pruden has focused on creating relationships that last. Our interest is always your best interest. While we offer decades of experience and expertise, constantly educating ourselves on your environment and consumers, we also take pride in our loyalty and value our credibility. You can depend on us to work for you. Because we're not just reliable, we're dedicated. And we never compete against our builder partners.

We offer superior products and service, including:

- ◆ Unrivaled quality
- ◆ Cutting-edge technology and innovation
- ◆ Unequaled marketing tools and resources
- ◆ A wide array of products
- ◆ Experienced project management and field support

Contact Varco Pruden today. Let us show you how, together, we can add value to your business and your reputation.



Visit [www.VP.com/ad/RB GK](http://www.VP.com/ad/RB GK) to receive this free brochure "Built on a Tradition of Excellence."

Circle Reader Service #301



# DYNAMIC FASTENER

*Everything for the Metal Builder & Roofer™*



**FREE 132 Page Full Color Tool & Fastener Hand Guide provides prices, engineering data & details product offering.**

**DYNAMIC FASTENER** is specifically geared to handle the needs of the Rural Building Contractor. We provide in-house custom color painting of screws and rivets with just a one or two day (days, *NOT* weeks) lead time. **TENS OF THOUSANDS** of power tools are stocked and sold at the lowest prices. Highest quality, top name brand fasteners are stocked and sold at the lowest prices. Same day shipment on orders received by 4:00 p.m. CST. We are a supplier to the largest metal building manufacturers.

We want to be **YOUR** source for screws, anchors, flashings, **DYNA-GUARD™** snow retention system, safety equipment, hand tools, power tools and accessories.

**7 warehouses to serve your construction needs for tools and fasteners**

(MAIN OFFICE)  
Kansas City • Chicago • Houston • Las Vegas • Memphis • St. Louis • St. Paul

**CALL 800-821-5448 or FAX 800-844-1199**

Call for your Free Full Color 132 Pg. Hand Guide. Better yet, call us for your next tool or fastener requirement. Discover for yourself why your peers enjoy doing business with our company!





# AIRCRAFT HANGAR

Graber Post Buildings Inc.

[www.graberpost.com](http://www.graberpost.com)



GG Jet Air of Washington, Indiana, was in need of a new hangar to house its growing fleet of aircraft. Functionality and economics were the main characteristics they were looking for. Graber Post Buildings was able to take the client's list of needs and turn it into a turnkey project. The new hangar utilizes two Higher Power hydraulic doors, arranged to accommodate a variety of aircraft. Metal siding, trim, and nail- and glue-laminated 3-ply 2X8 wood columns were all manufactured at Graber's facility nearby. By manufacturing many of the materials in-house, Graber said the company was able to maintain quality control, thus enabling them to create a superior post-frame building for the customer.

► For more product information from **GRABER POST BUILDINGS** circle 106.

**LOCATION:**

*GG Jet Air, Washington, Indiana*

**SIZE:**

*88'X64'X20'*

**CONTRACTOR:**

*Graber Post Buildings*

**BUILDING SYSTEM:**

*Graber Post Buildings  
post frame*

**EXTERIOR PANEL:**

*40yr #1 G-Rib metal roofing and siding*

**INSULATION:**

*R-38 blown fiberglass attic insulation;  
R-19 open-cell spray foam in walls*

POST-FRAME  
**MARKETING**  
& **ECONOMIC**  
SUMMIT

SEPTEMBER 28–29, 2016  
ROSEMONT, IL

**SUPPLIERS** AND **CONTRACTORS**  
UNITING TO BETTER THE  
POST-FRAME INDUSTRY

- Knowledgeable Speakers
- Roundtable Discussion
- Reception
- Networking Opportunities

**REGISTRATION  
OPENING IN JUNE!**  
[nfba.org/summit](http://nfba.org/summit)

**NFBA**  
NATIONAL FRAME BUILDING ASSOCIATION

Circle Reader Service #378

SOURCE BOOK eight

# MANUFACTURER'S RECOGNITION AWARDS



Every year our manufacturers participate in a few select projects which deserve special recognition.

These projects may receive association awards or excel in design, function or appearance.

This section highlights these exceptional buildings.

## URESTONE PANELS METAL BUILDING SOLUTIONS

BEST COST-SAVING  
SOLUTION



**Location:** Odessa, Fl  
**Metal Builder** Mtl Steel Inc, Florida  
**Architect:** Corner Stone Design Group In  
**Problem:** Design originally called for masonry and stone however it proved to be very costly because of the complexity of columns and flower box elements.  
**Solution** Contractor recommended URESTONE faux stone pre engineered 8 ft wainscot panels and **premade column kits**. By using this system the builder **significantly cut installation time and cost** without sacrificing appearance.

MOST INNOVATIVE  
DESIGN SOLUTION



**Location:** Port Huron Michigan  
**Metal Manufacturer** Golden Giant  
**Architect:** SynDesign  
**Problem:** Required brick element to blend with downtown environment. However hard to engineer brick with Long 20 ft span of between pillasters without support.  
**Solution** URESTONE worked with the the builders to engineer lightweight faux brick panels custom made to the size needed it took **only 3 workers** less than 2 weeks to install **over 1000 sq ft** of brick.



St. Louis, MO p:314-524-2040



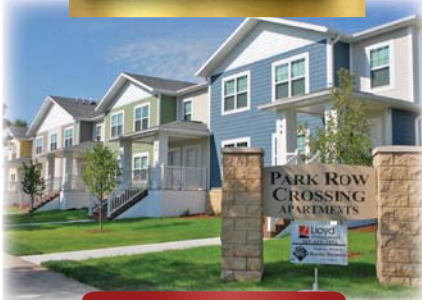
[www.urestonepanels.com](http://www.urestonepanels.com)



Circle Reader Service #503

# ENERGY PANEL STRUCTURES

WINNER Of Multi Family  
SIPA Award



**Park Row Apartments**

**Location:**

St. Peter, Minnesota

**Manufacturer:** Energy Panel Structures, Inc.

**Construction Type:** SIPs and Wall Panel

**Purpose:** Multifamily Housing/  
Apartment Building

WINNER Of Agricultural  
SIPA Award



**Equestrian Stable**

**Location:**

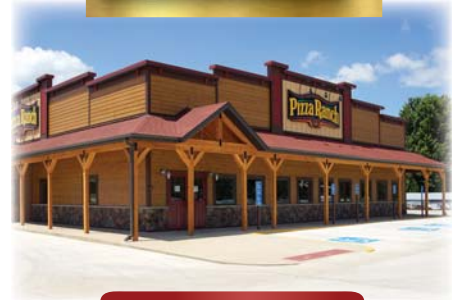
Kansas

**Manufacturer:** Energy Panel Structures, Inc.

**Construction Type:** Solid Core

**Purpose:** Equestrian Stable

WINNER Of Commercial  
SIPA Award



**Pizza Ranch Restaurant**

**Location:**

Storm Lake, Iowa

**Manufacturer:** Energy Panel Structures, Inc.

**Construction Type:** SIPs

**Purpose:** Restaurant

WINNER Of Multi Family  
SIPA Award



**Maplewood Shores**

**Location:**

Maplewood, Minnesota

**Manufacturer:** Energy Panel Structures, Inc.

**Construction Type:** Structural Insulated  
Panels

**Purpose:** Assisted Living Facility

WINNER Of Commercial  
SIPA Award



**Silvis Middle School**

**Location:**

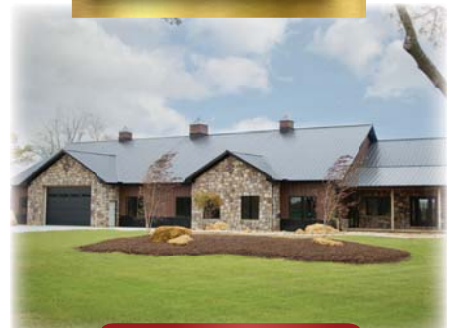
East Moline, Illinois

**Manufacturer:** Energy Panel Structures, Inc.

**Construction Type:** Structural Insulated  
Panels

**Purpose:** Middle School & Gymnasium

WINNER Of Residential  
NFBA Award



**CP 9700**

**Location:**

Tipton, Iowa

**Manufacturer:** Energy Panel Structures, Inc.

**Construction Type:** Stick-Built Home

**Purpose:** Single Family Housing



Energy Panel Structures  
603 N. Van Gordon Ave.  
Graettinger, IA 51342

712-859-3219  
www.epsbuildings.com

Circle Reader Service #335



# EVENTS CENTER

Armstrong Steel Buildings

[www.armstrongsteelbuildings.com](http://www.armstrongsteelbuildings.com)



Function and design are among the most important factors in any steel building project, but for the owners of the Cornerstone Ranch Events Center their building had to 'wow' its customers. That means every southern bride, every Texas gentleman, every prom, expo and benefit had to be sold partly on the appearance of the building. The 60'x140' building was customized and pre-engineered by Armstrong Steel, resulting in one of the largest events centers in the entire Texas panhandle. A typical center in the area accommodates 300 people, but this one grew Texas-style and has a capacity of 500, with more outdoor space available in an acre of fenced land.

► For more product information from **ARMSTRONG STEEL BUILDINGS** circle 107.



## LOCATION:

Cornerstone Ranch Events Center, Amarillo, Texas

## SIZE:

60'x140'

## STEEL BUILDING SYSTEM:

Armstrong Steel Buildings Inc.

# METALCON

A FUTURE BUILT BY HAND

UNDERL  
INSPE  
CY CERTIF  
S WIND  
SOFTWARE  
GREEN  
G METALLIC  
CUTTING  
S DETAILS  
ADERSHIP  
IG  
INGS  
TORS  
W  
NTAL  
CERTIFICATION

DER  
MARK  
ORMING  
TION  
NG ALU  
ILS GUT  
S ADH  
SUCCESS

Ro  
ENTAL  
OVERHEA  
AFET  
ROOFI  
TS COAT  
TRAC  
M COPPE  
HVAC  
IVES  
VERNMENT 3-D

FIT U  
OR INSP  
ERGY E  
WALLS  
TOOLS  
RS ERE  
ZINC  
RANES L  
SEALANT

ON METAL BUILDING  
S INSULATION TESTING  
APPS 3-D PRINTING  
RECYCLE STEEL FA  
SNOW RETEN  
ORNAMENTAL UNDERLAYMENT'S ADHF  
OVERHEAD DOOR INSPECTION  
ENERGY EFFICIENCY CERT  
2016 I  
SOFTWARE APPS ROLL  
RECYCLE STEEL  
BALTIMORE, MARYLAND GUT

ROLL F  
CAMER DESI  
STEEL F  
COILS GU

WE'VE GOT YOU COVERED

WWW.METALCON.COM

Circle Reader Service #331



# OFFICE BUILDING AND MINI-STORAGE

## Trachte Building Systems

[www.trachte.com](http://www.trachte.com)

...

Paul O'Leary and David Burke were not looking to move their civil engineering and surveying firm, but when the opportunity presented itself, they decided to build again and purchased a lot nearby. They performed the surveying, engineering, permitting, construction stake-out and inspection for the new facility themselves and pursued a wood-frame structure with a style and colors that reflected Vermont's heritage. They opted for a 4,800 square foot building for their office space. Having worked on storage projects in the past, they decided to add four mini-storage buildings on the back parcel of their remaining land. Upon research and positive feedback from a former client, they chose to work with Trachte Building Systems and found Mike Larson to be of great planning and construction assistance and later Steve Hajewski for marketing.

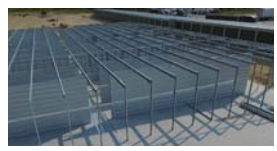


## Successful Projects Start with Trachte



### Quality Storage Buildings

We take quality seriously. From our durable 18ga jombs and headers to our wider doors and available standing seam roofs with no screw penetrations over the building envelope; we obsess over the details to provide a great building.



### Experienced Staff

Trachte's Regional Managers know the storage business inside and out. Our entire staff is focused on helping you build a successful business.



### Unmatched Resources

An informed client is a successful client. We offer free seminars, web based investment calculators, and educational videos on a variety of development topics. Visit [trachte.com](http://trachte.com) to learn more.



800 356-5824 ■ [www.trachte.com](http://www.trachte.com) ■ [tbs@trachte.com](mailto:tbs@trachte.com)

Circle Reader Service #559

► For more product information from **TRACHTE BUILDING SYSTEMS** circle 108.



**LOCATION:**

*O'Leary-Burke Civil Associates,  
PLC, Essex, Vermont*

**SIZE:**

*4,800 sq. ft. office building; plus two  
20'x90'x8' mini-storage buildings  
each with 1/4:12 lean-to; and two  
20'x100'x8'4" mini-storage buildings  
each with 1/4:12 lean-to.*

**CONTRACTOR:**

*Chris Kittell, Kittell Builders*

**ARCHITECT:**

*Michelle Dufresne,  
Innovative Architecture*

**ENGINEERING**

*J. Ina Hladky*

**ROOF & OVERHANG PANEL:**

*Galv SSR, 4*

**ACKNOWLEDGEMENTS:**

*S.D. Ireland (site work and concrete);  
Al Senecal (Omega Electric); Jim  
Carew (Sheet Metal Design Inc.);  
VT Recreational Fencing; Rick Rice  
(Earthscares Inc.); Bruce Bernier  
(Merchant's Bank).*

“Still Making a  
**WORLD OF DIFFERENCE”**



PLY-FAST SEALER



PLY-LO FASTENER



PLY-LO LOW PROFILE FASTENER



METAL FAST SEALER

- Colors to match any Rollformed Steel
- Hundreds of Closure Styles & Angle Cuts
- Dozens of Sales Professionals
- Factory Delivery Fleet & Fast Delivery
- High Quality Products for any Application



800.558.5895 • Fax: 800.257.5926 • [www.plyco.com](http://www.plyco.com) • Elkhart Lake, Wisconsin

Circle Reader Service #498



# VINEYARD STORAGE BARN

Valspar Corporation

[www.valsparcoilextrusion.com](http://www.valsparcoilextrusion.com)



Spanning 40-acres, the vineyard has been a staple in the Sonoma Valley for decades and it recently embarked on a mission to replace the 70-year-old wooden barn used for its grapevine storage. With a desire to maintain the look of an authentic barn, but the need to incorporate modern functionality, owners of the vineyard decided to explore building with metal. General contractor, The Steel Building Guys, called upon MBCI to supply metal paneling for both the walls and roof, which were finished in Valspar's Fluropon architectural coating. To achieve the traditional barn aesthetic, the wall panels were coated in a Rustic Red color of Fluropon, while the metal roof panels were finished in Polar White. In addition to achieving the desired authentic barn look, Valspar's Fluropon coatings also add to the durability of the structure.

► For more product information from **VALSPAR** circle 109.

**LOCATION:**

*Bastoni Vineyards;  
Santa Rosa, California*

**SIZE:**

*2,100 sq. ft.*

**CONTRACTOR:**

*The Steel Building Guys,  
Santa Rosa, California*

**COATINGS:**

*Fluropon from Valspar  
Corporation, Minneapolis*

**METAL PANEL MANUFACTURER:**

*MBCI, Atwater, California*

**METAL BUILDING SYSTEM:**

*Star Buildings*

# HEALTH AND SPORTS FACILITY

## Urestone Panels

[www.urestonepanels.com](http://www.urestonepanels.com)



The building owner wanted a cladding system that would meet the zoning requirement to cover part of the metal siding with a brick or stone material and a system that would add character and curb

appeal. The answer was a high quality URESTONE composite panel attached directly over the metal siding.

► For more product information from **URESTONE** circle 110.



### LOCATION:

Peoria, Illinois

### SIZE:

12,000 sq ft

### CONTRACTOR

Rick Alstrom ATG Services

### BUILDING SYSTEM:

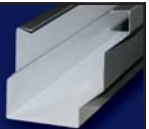
Federal Steel Systems, Denver, Colorado

### EXTERIOR PANEL:

Urestone LedgeStone wainscot panels 42' high x 96" long



*A Unique Hybrid of European Design & American Manufacturing*



## SHEET METAL FOLDING MACHINES

This patented, unique and cutting edge bending system not only offers flexibility and dramatically reduces material handling but is also capable of bending unique profiles like never before. Features a very user-friendly touch screen with high tech software that is simple and easy to understand! A superior machine at a competitive price!



**SINGLE & DOUBLE BENDERS**

**FOR MODERN METAL FORMING!**



**HERSHEY'S THE METAL MEISTER, LLC**

NELSON HERSHBERGER & SONS

420 PROGRESS DR. MATTOON, IL 61938

TF: (877) 289-3030 · INFO@HERSHEYSMM.COM

## Hitz Halter

- ✓ Owner, Shipper, and Installer Friendly
- ✓ Termite & Insect Resistant
- ✓ 100% Virgin Material for Higher Quality
- ✓ Grid Marked for Easy Pex & Rebar Placement
- ✓ 4' x 24' Fanfolded Sheets



**THE SUPERIOR INSULATION FOR ALL BELOW-GRADE APPLICATIONS!**

Call Today for More Information and Your Free Brochure on the Hitz Halter and Variobend!

Circle Reader Service #536



# CHURCH AUDITORIUM

Metal Sales Corporation

[www.metalsales.us.com](http://www.metalsales.us.com)



Grace Place Church is not your average church. It offers live concert performances, retreats and special worship just for kids. Once spread out between four industrial buildings with only 300 seats for worshippers to squeeze into, Grace Place with the help of Metal Sales, has reached its full glory under one roof with an expanded 700-seat auditorium. The new Grace Place Church sits majestically on a 19-acre site. Roll-up doors and expansive windows provide views of the Rocky Mountains.

► For more product information from **METAL SALES MFG.** circle 111.

**LOCATION:**

*Grace Place Church in  
Berthoud, Colorado*

**SIZE:**

*30,000 sq. ft.*

**ARCHITECT:**

*Visioneering Studios,  
Irvine, California*

**METAL BUILDING ERECTOR:**

*Big Johnson Construction,  
Fort Morgan, Colorado*

**CONTRACTOR:**

*Fransen Pittman General Contractors,  
Englewood, Colorado*

**STEEL SUPPLIER:**

*B&C Steel, Gering, Nebraska*

**EXTERIOR PANEL:**

*13,000-plus square feet of  
Magna-Loc 24-gauge roof  
panels in ash gray; 24-gauge  
soffit panels to match; 12,000  
square feet of 7/8" corrugated  
22-gauge terra cotta exterior  
wall panels; more than 3,000  
square feet of PBR-Panel  
24-gauge champagne metallic  
panels. All from Metal Sales.*

# WAREHOUSE

## Schweiss Doors

www.bifold.com



When CAID Industries erected a new modular rigid frame they looked to Schweiss to custom make two crane doors. When the hydraulic single-leaf doors to the warehouse are open, there

is unrestricted crane movement through the partition walls, resulting in efficiency and energy-savings. Mid-West Steel Building Company named the CAID facility as its Building of the Year.

► For more information on **SCHWEISS DOORS** circle 112.

**LOCATION:**  
CAID Industries,  
Tucson, Arizona

**SIZE:**  
54,800 sq. ft.

**METAL BUILDING  
ERECTORS:**  
Fast Fab Erectors

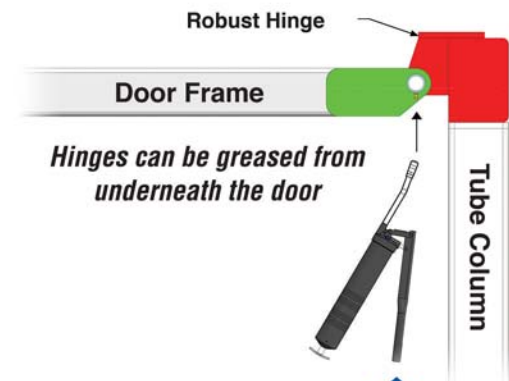
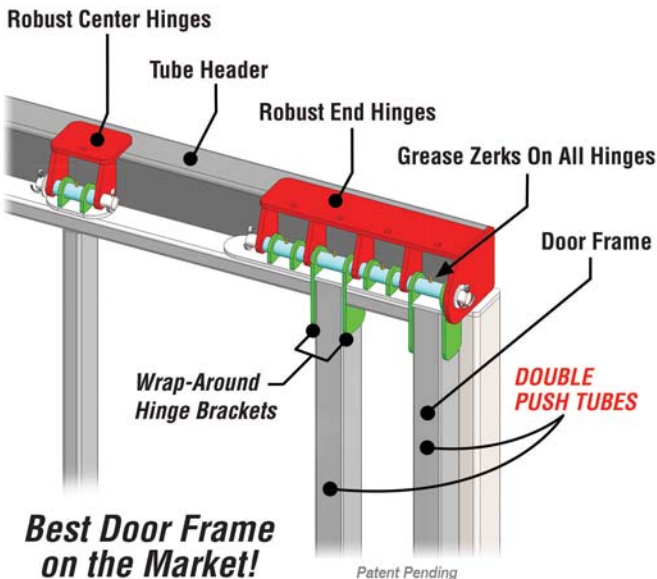
**BUILDING SYSTEM:**  
Mid-West Steel  
Building Company

**DOORS:**  
Two custom-made crane  
doors from Schweiss  
Doors, 61' wide and 44'  
wide, engineered for 115  
mph wind rating, and 360  
volt 3-phase electrical  
with remote openers.

## **SCHWEISS** "ONE-PIECE" HYDRAULIC DOORS

# BETTER, STRONGER HINGE DESIGN

The Hinge Makes The Door



**SCHWEISS** is the only manufacturer to offer hinges that can be greased from underneath the door without removing the top weather seal.

 **SCHWEISSDOORS.COM**



507-426-8273

Circle Reader Service #414

**LOCATION:**

Blue Grass Airport,  
Lexington, Kentucky

**SIZE:**

Two 54'x329' buildings

**ARCHITECT:**

J. R. Miller and Associates,  
Brea, California

**CONTRACTOR:**

Codell Construction Company,  
Winchester, Kentucky

**BUILDING SYSTEM  
AND DOORS:**

Erect-A-Tube Inc.

**OTHER PRODUCTS:**

Metal Sales Classic Rib roof  
panel, T10-A and T10-C  
Verti-Line series wall panel;  
ITW Buildex-Scots Tekes  
fasteners; E-GSI structural  
polycarbonate panel



# AIRCRAFT HANGARS

Erect-A-Tube

[www.erect-a-tube.com](http://www.erect-a-tube.com)

...

The Blue Grass Airport is located adjacent to the Keeneland Race Course and beautiful neighboring horse farms. The airport's vision, combined with the architect's input, designed the aircraft hangars to blend into the historic area and replicate a horse farm building.

► For more product information from **ERECT-A-TUBE** circle 113 .

The Heartland NFBA Chapter presents

the 6th Annual

# HEART LAND CONFERENCE

Oct. 5 - Oct. 6, 2016  
Branson, Missouri

## Learn how to

- Increase your revenue
- Survive an OSHA Inspection
- Monitor Risk Management
- Increase worker safety



**Register Online  
by 9/5/16  
to avoid late fee  
Pay by credit card  
or PayPal**

Free Dinner  
Reception at  
6 pm on 10/5/16

HEARTLAND  
CHAPTER  
NFBA  
NATIONAL FRAME  
BUILDING ASSOCIATION

[www.heartlandnfba.org](http://www.heartlandnfba.org)

[nfbaheartland@gmail.com](mailto:nfbaheartland@gmail.com)

**STAY AT THE LUXURIOUS STONEBRIDGE RESORT!**  
866-332-1373 - Book Now - Limited Availability

Circle Reader Service #597



# WINERY

Wick Buildings

[www.wickbuildings.com](http://www.wickbuildings.com)



This new wine production facility at Petersburg, Illinois, includes an area for both tasting and retail. A special feature is an inset porch in back. The project is capped with a glass-paneled cupola.

► For more product information from **WICK BUILDINGS** circle 114.



## LOCATION:

*Petersburg, Illinois*

## SIZE:

*40'x64'x10'4" with 6/12 roof pitch*

## CONTRACTOR:

*Custom Structures Inc., Ashland, Illinois*

## BUILDING SYSTEM:

*Wick Buildings post frame*

## INSULATION:

*Fiberglass batt and blown*

## VENTILATION:

*Profile Vent, 18" vented soffit*

## PRODUCTS:

*Fasteners: SFS color matched to Wick steel;*

*Doors and windows: Plyco; Interior panel: Wick flushwall and liner in production area*

## Exceptional Value and Service

Wick Buildings has been helping Midwest farmers, families and businesses by providing long-lasting, low-maintenance buildings since 1954!

Buildings with quality and value... and no compromises. Join our team!

**800-356-9682**

**WickBuildings.com**



**Wick  
Buildings®**

Agriculture ▪ Suburban ▪ Equestrian ▪ Commercial

Circle Reader Service #511

# Your guide to post-frame and metal building supplies

From the ground up to the roof, the following product profiles will help you build the best post frame or metal building your customers demand. Use the following index to quickly find what you're looking for.

Building Systems (Post Frame, Metal, Fabric).....	28	Cupolas.....	44	Trusses and Truss Products .....	52
Fasteners (Nails, Screws, Roof Clamps) .....	30	Roof & Wall Panel .....	46	Insulation.....	52
Adhesives, Sealants & Caulks .....	35	Retrofit.....	47	Ventilation.....	52
Doors and Door Hardware .....	37	Coil and Coil Paint/Coatings.....	48	Moisture & Vapor Barriers.....	54
Skylights & Daylighting .....	39	Underlayment .....	49	Protective Covers .....	54
Windows .....	41	Snow Management.....	50	Equipment .....	54
		Wind Uplift Control .....	50	Fall Protection .....	58
		Posts & Foundation Products .....	51		

## POST FRAME PACKAGES



### Graber Post Buildings | Circle 125

Graber Post Buildings continues to be a phone call away from acquiring all post-frame building materials and do-it-yourself packages. GPB manufactures metal panels for any residential, commercial, industrial, agricultural or roofing application. It also produces custom trusses, metal trims, laminated poles and now features a steel coil division.

### Energy Panel Structures | Circle 126

Energy Panel Structures specializes in pre-engineered buildings and tilt-up panel systems for all types of construction: post-frame, solid core, energy efficient buildings (SIPS). Since 1981 EPS has offered building designs in commercial,



agricultural, residential and cold storage.

### Wick Buildings | Circle 127

Wick Buildings is a leader in the post-frame industry, founded in 1954 and with more than 72,000 buildings completed. Wick builds everything from industrial and light-manufacturing facilities to banks and aviation buildings, from gas stations and churches to equine and livestock facilities to storage facilities. As a Wick builder you'll have a building partner with corporate strength and a name you and your customers can trust.

## METAL BUILDINGS

### Armstrong Steel Corporation | Circle 128

Rural builders choose Armstrong Steel because its quality components are matched

only by the ease of erection. Pieces are pre-cut and pre-drilled, saving costly on-site assembly. Plans are simple to understand, and with an in-house engineering department, Armstrong is able to modify designs and meet rural permitting requirements quickly. A central logistics and freight department ensures that your customer's building is delivered on time and includes all the parts necessary for quick erection.



### Central Storage Works | Circle 129

Central Storage Works, a division of Central States Manufacturing, specializes in private labeling for its distributor's self-storage systems. This is self-storage made simple with fast and easy-to-use construction designs, in-house detailing, quick and intuitive quote results, and an experienced

team to support both sales and construction questions. With seven manufacturing facilities, you receive quick turn-around while benefiting from lower freight costs.



**Erect-A-Tube | Circle 130**

Erect-A-Tube designs, engineers and manufactures electric bi-fold doors, bottom rolling doors, aircraft T-hangars and clear-span hangars for the general aviation and business jet markets. Utilizing the structural qualities of HSS tubing, a bridge-truss design was developed, providing minimal deflection, smooth operation of the door system and flexibility in hangar design. With 54 years of manufacturing experience, it provides a single-source product line with a fully-integrated system resulting in ease of construction and years of reliable service.



**Heritage Building Systems | Circle 131**

Members of the Heritage Building Systems' team of metal building specialists have more than 150 years of combined experience in estimating and pricing steel building kits. Whether you're in the market for something large and complex or something small and simple, the company can meet your needs. Heritage Building Systems is among the nation's leading retailers of pre-engineered metal buildings for a reason: they manufacture strong, quality steel buildings, built to last.

**Metallic Building Co. | Circle 132**

Metallic Building Company's Long Bay System enables fast and affordable construction of buildings that require large, open floor space. The Long Bay System may also help reduce total project time up to 30 percent. Metallic is a leading division of NCI Building Systems, one of the largest integrated manufacturers and marketers of custom-engineered metal buildings.

**R&M Steel - | Circle 133**

R&M Steel, with 47 years of excellence, custom designs pre-engineered metal building systems for virtually any application, designed for quality, and fast and economical installation. Metal building components, including roof and wall paneling, C's, Z's, eave struts and trims are also available.



**Sukup Steel Buildings | Circle 134**

Sukup Manufacturing Co.'s pre-engineered steel buildings feature clear-span construction and standing seam or screw-down roofs. The clear-span design allows for flexibility in customizing interior space to meet customer needs. Purlins and girts are galvanized for long-life and pre-punched to ensure proper fit and faster installation. A variety of sidewall and trim colors and options are available.

**Trachte Building Systems | Circle 135**

Trachte designs, manufactures and erects a full line of durable, pre-engineered and customized steel self-storage systems. This line includes single-story, multi-story, interior partition, corridor

and boat/RV storage systems. Trachte is committed to helping owners make informed decisions with its knowledgeable sales team, who offers advice every step of the way. This commitment, along with more than 115 years of manufacturing experience, has given the company a leading edge in the self-storage industry.



**Varco Pruden Buildings | Circle 136**

Through advanced engineering and proprietary building products, Varco Pruden provides innovative steel building solutions worldwide for low-rise commercial projects including offices, warehouses, schools, manufacturing plants and retail spaces. With six strategically-located service centers, multiple production resources and a network of more than 1,000 builders within the U.S. and Canada, Varco Pruden is a market leader in the industry.

**FABRIC BUILDINGS**

**Span-Tech Fabric Buildings | Circle 137**



Span-Tech Fabric Buildings are manufactured in widths from 19 to 150 feet, all open with no center supports. Span-Tech buildings are used for any storage requirement,

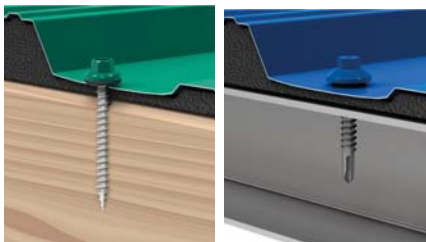
for all animal enterprises and for storage of corrosives such as fertilizer, salt, compost and other materials. Trusses

# products

## NAILS, SCREWS

are hot-dip galvanized post fabrication. All fabric has virtually no metallic components including those used for tensioning. Cattle buildings have side eave and ridge vent options.

### NAILS, SCREWS



#### Atlas Bolt & Screw | Circle 138

Atlas Bolt & Screw has a wide wood fastener selection, along with closures, venting, sealing and flashing solutions. Its headquarters and U.S. manufacturing is based in Ashland, Ohio, with secondary manufacturing and fully-staffed service facilities strategically located in Ashland, Ohio; Houston, Texas; Salem, Oregon; and Flat Rock, North Carolina. Atlas Bolt & Screw provides its partner contractors with longevity of proven performance, extreme customer focus, a vertically integrated supply chain, a heritage of innovation, and industry leadership.



#### Direct Metals Inc. | Circle 139

Fasteners are what holds your building together and holds on the exterior sheeting. Proper design and quality of your fasteners are paramount in the expected longevity and rigidity of a building. Direct Metals Inc., understands the importance

of fasteners and offers a wide variety of quality fasteners for construction. DMI manufactures panel clips for standing seam panels and offers WoodZIP post-frame screws, Panclip pancake-head fasteners, and structural fasteners for wood, steel and masonry.

**DYNAMIC FASTENER**  
Everything for the Metal Builder & Roofer™

**2016 TOOL & FASTENER HAND GUIDE**  
Over 99% of standard orders received by 4:00 p.m. CST will ship that same day!

<b>KANSAS CITY</b> 8671 S. 24th St. Midwest Plank, S. Ashland 913-234-8888 913-234-1181 913-231-4444	<b>CHICAGO</b> 2573 N. LaSalle Ave. Midwest Plank, S. Ashland 708-616-1400 708-616-1401 800-671-7187	<b>HOUSTON</b> 1414 Bayshore Pk. Houston, TX 77057 713-647-8881 713-647-8882 800-688-0487	<b>LAS VEGAS</b> 440 West Sunset Dr. Las Vegas, NV 89102 702-506-1000 702-506-0176 800-727-0388	<b>MEMPHIS</b> 620 South Memphis Dr. Memphis, TN 38117 901-889-8000 901-889-8001 800-727-0388	<b>ST. LOUIS</b> 5350 Parkway Dr. St. Louis, MO 63110 314-756-8771 314-756-8888 800-444-0312	<b>ST. PAUL</b> 2216 Turfway Rd. St. Paul, MN 55114 612-754-1100 612-754-1101 800-725-0308
---	---	--	--	--	---	---

PRICES GUARANTEED UNTIL MARCH 31, 2017 OR WHILE SUPPLIES LAST. SUBJECT TO CHANGE WITHOUT NOTICE.  
(800) 821-5448 www.dynamicfastener.com © Copyright 2016 D.F.F.

#### Dynamic Fastener | Circle 140

Dynamic Fastener has released the newest version of its popular *Tool and Fastener Hand Guide*. This one-of-a-kind gem provides many answers to common and uncommon issues that arise in the metal building industry. The 132-page full color publication provides clear and concise answers to questions pertaining to fastener applications, engineering data, types, size ranges and fastener materials. In addition to screws and anchors, the hand guide provides prices and other useful information relating to flashings, sealants, insulation tapes, safety equipment, hand tools, power tools and more. The 2016 publication includes the Dyna-Guard snow retention system for metal roofs. Dyna-Clamps are also available to accommodate many different profiles of standing seam roofs.

#### East Coast Fasteners | Circle 141

East Coast Fasteners produces durable, long-lasting fasteners for all combina-



tions of building materials. For fastening wood, aluminum, steel or any variety of applications the East Coast fastener line is manufactured to superior quality standards for optimal performance. Ultraseal protective coating improves corrosion resistance giving East Coast's fasteners increased life expectancy. Each order is computerized color matched exactly to the customer's specifications. With a variety of coatings to assure the builder has the best product on the market and the fastest cutting tips, East Coast fasteners are manufactured to standards that assure fast and reliable installation every time.



#### FASCO America | Circle 142

To conquer your BIG timber framing jobs, FASCO America offers a full range of Jumbo Nails and two well-designed tool models. Both the F91 A RHN20-130 and F91AC RHN20-160 tools have a side handle for extra support while driving the Jumbo Nails. Jumbo Nails are available in 4 inch to 6-3/8 inch lengths and can be ordered in many different finishes, shank deformations, points and collations to meet your exact needs.

**Fasteners Direct LLC | Circle 143**

Fasteners Direct LLC is a manufacturer of screws and a distributor of accessories for metal companies. The company's manufactured parts are distinguished for their unequalled resistance to corrosion and for the anti-back-out feature of their Sureloc metal-to-wood screw, and for the new Torpedo point on their metal-to-metal screws. The Torpedo point delivers fast installation rates for self-drilling screws.



drive; #2 square combo drive; and #2 Phillips internal drive systems. It can be bagged in 100- or 250-piece bags. Drivers are included in each fastener carton.

**Leland Industries | Circle 145**



Leland Industries offers the longest line of innovative post-frame fasteners in the industry, from #10- #14 diameter, in lengths to 8 inches, with high-hex or pancake heads. All are available powder coated in more than 100 colors to match panels. Powder-coated Master Grippers are warranted for the life of your panels. For heavy-gauge panels, Mini Drill Points are capable of handling up to 16 gauge to-

**Lakeside Construction Fasteners | Circle 144**

Lakeside Construction Fasteners, a full service manufacturing and distribution company offers vast fastener solutions for the standing seam metal roof industry. The Pro ClipLock fastener line is avail-

able in a pancake, wafer, or button-head design. The #10 by 1 inch to 2 inches is specifically designed for decking substrate materials including hardwoods with standing seam clips in mind. The Pro ClipLock family is available in self-drillers or self-tappers and offered with #2 square



**MAIN STREET™**  
VINYL WINDOWS BY A.J.

**Patented EZ-V™ Trim System –**

The quick and easy way to trim your vinyl windows.

**Features:**

- White or custom color matched
- Leak-free flashing
- Fully trimmed, requires no application of a J-channel
- Resistant to thermal expansion and contraction
- Saves time and installation labor

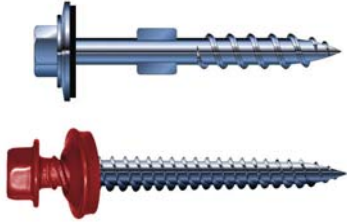


**Building Ideas**

A.J. Manufacturing, Inc.  
1217 Oak Street  
Bloomer, WI 54724  
800.328.9448 [www.ajdoor.com](http://www.ajdoor.com)



Circle Reader Service #334



tal thickness. To complete the package, One-Steppers 12-11 diameter, drill an expansion hole allowing fiberglass or PVC panels to “float”, preventing cracking caused by expansion and contraction.



**Levi’s Building Components | Circle 146**

Levi’s has recently introduced several new products including the ProZ SD that ensures a weather-tight seal for metal-to-metal installations and is compatible with all metal finishes. The design of the ProZ SD washer head reduces overdriving, and the zinc aluminum alloy cap will never red rust. It features a 25-year warranty and is available in self-drilling #3, #5 and stitch drill points. Also new from Levi’s is Zinc Plated Low Profile Pancake Head Screws. This ultra-thin fastener is designed to fasten flush and lay flat without dimpling or showing through the panel. Zinc Plated fastens metal to wood. It comes with a #2 square-head style, low profile with SP drill point and is available in three #10 sizes: 1, 1-1/2 and 2 inches.

**Maze Nails | Circle 147**

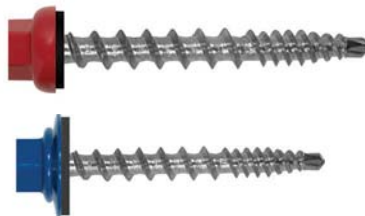
Maze is the exclusive manufacturer of Stormguard double hot-dipped galvanized nails with a lifetime warranty against rust. In business since 1848, Maze offers



a full line of specialty nails in bulk for hand driving and in collated sticks and coils for popular pneumatic nailers. Maze has been serving the post-frame industry for many years, providing painted rubber washer nails for corrugated roofing and siding. Maze post-frame nails meet the all-important ASTM F 1667 specification. In addition, Maze manufactures nails for fiber cement siding products, cedar and redwood sidings, fencing, decking and roofing. Maze Nails are proudly made in the USA in Peru, Illinois.

**National Nail | Circle 148**

Pro-Fit provides an unexpected experience: a brand, a product and a partner that fits your project. Whether you are framing a home, putting on a roof, or applying trim, Pro-Fit collated fasteners offer solutions that are designed to fit most leading brand tools and project requirements. From framing to finish, Pro-Fit offers nail, screw, and specialty fastening solutions packaged in convenient job-sized 1- and 5-pound boxes, or in 25- and 50-pound bulk.



**Sealtite Building Fasteners | Circle 149**

Sealtite supplies steel-frame and post-frame screws for agricultural, commercial, industrial and residential metal roof applications. Product strengths are drill

quality and corrosion resistance, as showcased on the MAXX SteelBinder and, new in 2016 the KwikSeal WoodBinder with micro-bit drill point. This new point is more consistent than the sharp-point Type 17 design and will drill multiple thickness of steel, while eliminating the metal “pigtailed” that can embed themselves in the rubber washer. All sharp-point screws will transition to this new point, including the ZXL WoodBinder zinc-aluminum alloy molded head and the ST-XL WoodBinder 304 SS cap, both which carry 40-year warranties against red rust. Solid and vented foam closure strips, rubber pipe flashings, pancake and wafer-head screws for standing seam roofs round out the product line.



**SFS intec | Circle 150**

SFS intec manufactures fasteners for the metal building and post-frame markets. The Woodgrip XG with a large aggressive thread design provides superior performance in OSB board and plywood. This metal panel fastener offers superior resistance to strip-out, improved pullout and backout values over standard #9 or #10 woodscrews and improved torque to strip-out values. Other SFS intec fasteners for the metal roofing market include Woodgrips, Woodgrip HiLo mill points, EVERGRIP bi-metal screws, and WoodZAC and WoodMAC stainless steel capped fasteners.

**Triangle Fastener | Circle 151**

Panel-Tite Ultra 14 is designed for fast installation and corrosion-free performance. Features and benefits include:

**PANELTITE Ultra 14  
#14-10 Type 17  
Carbon Steel  
TRI-SEAL®**



design to provide ultimate pullout resistance; available with TRI-SEAL 1,000 hour salt spray coating which is formulated for ACQ lumber applications; assembled with EPDM bonded washer for exceptional weatherability; and Type 17 mill point eliminates splitting of wood. All fasteners can be painted with TFC's Kalida-Kote paint finish to exact color match. Polyurethane with UV protection provides a chip-resistant finish without chalking and fading. In addition, #14-10

by 1-1/2 inch is now available with long-life zinc head.

**ROOF CLAMPS**



**Building Products Development I  
Circle 152**

Building Products Development (BPD) is a leading metal roof clip manufacturer in the United States. BPD offers a full line of high-quality clips and accessories for all standing seam profiles. With large stock readily available, BPD is able to process and ship most orders on the same day.

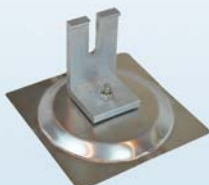


**EcoFasten Solar | Circle 153**

ASG-U clamps, manufactured by industry leader Alpine SnowGuards, are efficient and cost-effective roof mount attachment options for any metal standing seam roof. Thanks to the oval-point set screws, installation of the ASG-U clamps will not pierce the roofing material or void roofing manufacturer's warranties. Available in configurations for vertical (double-lock) and horizontal (single lock) standing seams, the ASG-U clamps are an ideal way to attach just about anything to any standing seam roof.



GreenFasten™



SimpleGrip-SQ

Rock-It System



DESIGNED  
WITH THE  
INSTALLER  
IN MIND



877.859.3947

www.ecofastensolar.com

Circle Reader Service #366



**S-5! | Circle 154**

S-5! clamps and brackets are extraordinarily versatile and allow you to attach almost anything to standing seam, exposed-fastened and corrugated metal roof profiles. Attach solar panels, snow

retention, signs, light fixtures, gas piping, antennas, roof walkways, HVAC equipment, lightning protection systems, conduit, condensate lines and more—all without violating the integrity of the roof or the roof's warranties.

**PEEL IT. SEAL IT. DONE!**

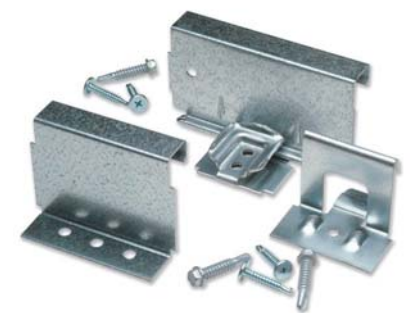
**PEEL & SEAL®**  
SELF-STICK ROLL ROOFING

**Peel & Seal®** is the original self-adhering waterproofing membrane designed for low slope roofing or flashing applications. This single-ply membrane applies directly to the roof deck and serves as the final roofing surface. Ideal for hundreds of applications including whole roofs, dormers, sunrooms, metal roofs, and flashing around exterior penetrations.

**55 YEARS** ANNIVERSARY 1961-2016

**mfm** BUILDING PRODUCTS CORP.  
800-882-7663 | [www.mfmbp.com](http://www.mfmbp.com)

- Ideal for difficult roofing applications
- Aggressively adheres to the roof deck
- Self-seals around fasteners
- Aluminized surface limits solar gain
- Easy handling and installation
- Requires no coatings or coverings for permanent exposure to sunlight
- Virtually maintenance-free
- Variety of widths and color options
- 10-year limited warranty
- Made in the USA



**SFS intec | Circle 150**

SFS intec manufactures clips and fasteners for the standing seam panel market. The company's goal is to produce the best, cost-effective clips on the market that comply to industry approvals and meet design load requirements. Snap lock, fixed, float and specialty clips, as well as bearing plates are available. Fasteners designed with head styles, drill points and material types to meet performance requirements compliment this product offering.



**Sno Gem, Inc. | Circle 155**

Specifically designed for Sno Gem's iClad and Sno Blockade snow retention systems, Sno Cube is an innovative clamp that attaches to virtually any standing seam metal roofing profile. It uti-

Circle Reader Service #412

lizes patent-pending WaveLock technology that provides unparalleled strength via three points of attachment. Sno Cube's Silver Bullet set screws include a rounded "bullet" tip to maximize strength without compromising the paint finish or the material.



**SnoBlox-Snojax | Circle 156**

The Roof Clamp RC and RCT are universal-fit standing seam clamps featuring a single-piece aluminum body with three set screws and a top bolt. Secure snow retention bars, solar panels, satellite dishes, roof walks, signs, awnings, conduit or HVAC lines. Installation is fast and simple and will last the life of the roof. Roof Clamp RC and RCT fit nearly every standing seam in the field.

**ADHESIVES, SEALANTS, CAULKS**

**Aztec Washers | Circle 157**

Aztec's tooling capabilities coupled with numerous elastomers, metal, and alloy options enable it to offer customers a variety of choices to fill virtually every need in roof flashings, pipe, sealing washer and plugs. Its Master Flash is a universal flash piping system specially designed to accommodate roof penetrations for everything from pipe, cable, conduit and wire, from 1/4 inch up to 28-1/2 inches in diameter.

**Dynamic Fastener | Circle 158**

Drop-Stop sealer was specifically designed for application to metal roofs and problem areas such as gutters, expansion joints, etc. Made from select synthetic



rubbers, Drop-Stop is applied as effortlessly as heavy-bodied paints. With 1600 PSI tensile and 600 percent elongation capabilities, this unique material actually stretches and recovers to bridge roof joints in which thermal movement can be expected. Also from Dynamic Fastener is Tite-bond metal roof sealant for exceptional adhesion to Kynar-

# PANEL-TITE<sup>®</sup>

## METAL-TO-WOOD SCREWS

SINCE 1977  
23 LOCATIONS NATIONWIDE

# ULTRA 14

*HIGH STRENGTH FOR SUPERIOR PERFORMANCE!*

- Up to 3 1/2" Long
- EPDM bonded washer
- Ultimate pullout resistance
- TRI-SEAL<sup>®</sup> 1,000 hrs salt spray coating
- Type 17 mill point reduces splitting

WE'VE DESIGNED & ENGINEERED OUR PRODUCTS FOR EASY INSTALLATION & LONG-LIFE PERFORMANCE.

800.486.1832

www.trianglefastener.com

f in t y

Circle Reader Service #425

## products

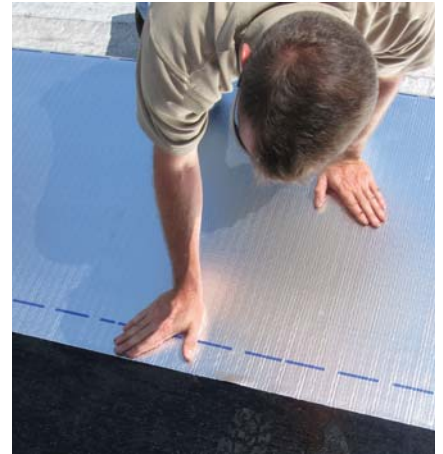
ADHESIVES, SEALANTS, CAULKS

coated metal materials, standard metal, aluminum, steel, galvanized bonderized surfaces, plastics and glass.

### MFM Building Products | Circle 159

MFM is the right solutions provider when

it comes to effective waterproofing and weather barriers for all types of industrial buildings, commercial structures, retail properties and private residences. Meeting today's demanding challenges in the construction market is why MFM prod-



ucts are designed for maximum performance, ease of installation and improved profits for its customers.

### Novagard Solutions | Circle 160



Novaflex metal roof sealant is one of the premier silicone sealants around, with its excellent adhesion to all metal types including Kynar, and its permanent flexibility. Novaflex extrudes down to -20°F and up to 120°F, and is tack free in 10-15 minutes. The seal stays flexible for years with minimal shrinkage, so there is no sagging, slumping or cracking.

### OSI | Circle 161



OSI Quad MAX window, door and siding sealant is a patented sealant formula that has superior flexibility, strength and durability performance, even in the harshest weather conditions, like freezing temperatures and intense heat. It offers 5X stretch and 50 percent joint movement, which provide long-term durability. It also has strong adhesion to most building materials

without primer, creating a barrier against air and moisture infiltration. Quad MAX offers color matching to 4,600-plus colors.

## MB™ New Micro-Bit™ Engineering

Patent Pending

### Stronger, More Consistent, Drill Point

The #1 complaint regarding sharp point screws is that they often drill slowly or not at all. SEALTITE has married its metal building fastener technology into its new KWIKSEAL® MB™ with micro-bit engineering. This KWIKSEAL® MB™ will eliminate the slow drill or no drill complaint. The transition thread will still generate superior holding strength in all wood substrates. The point will generate small metal shavings & eliminate the long "pigtail" prevalent with sharp point screws. It all adds up to a cleaner, more consistent application.



#### Easy Multi-Layer Penetration

The MICRO-BIT will penetrate multiple thicknesses of metal panel often found at ridge cap applications more consistently than sharp point screws.



#### Eliminates Slow or No Drill



#### No Pig Tails

**Call Today 800-352-4864**

Most powder colors of the 10 x 1", 10 x 1 1/2", & 10 x 2" KWIKSEAL & ZXL WOODBINDER are available with the micro-bit point. The 10 x 2 1/2", 10 x 3", & 12 x 3/4" Stitch will be available 3rd quarter 2016



© 2016 Sealtite Building Fasteners

Circle Reader Service #429

**DOORS**

**A.J. Manufacturing | Circle 162**



A.J. Manufacturing builds high quality steel walk doors with flush 6-panel cross-buck, 2-panel and textured skin panels along with several lite options. AJ doors are built with G60 galvanized steel, pre-hung in steel or aluminum frames with 4 inch x 4.5 inch fixed pin or ball bearing hinges. The 1-3/4 inch doors are polyurethane foam injected for an R-12 insulating value. AJ doors have been independently tested and meet Florida coastal and Texas wind-load requirements.

**CannonBall:HNP | Circle 163**



CannonBall doors set the standard for quality, variety, functionality and installation ease. Steel entry doors, like popular 1900-Series provide high aesthetics and commercial-grade longevity, while ag builders find thermal breaks, durability and a full range of accessories in the 1800- and 2000-Series models. Additional door varieties like sliding barn doors, Dutch doors, bale or loft doors and roll-up doors are also available, complete with optional hardware and accessories.



**DBCI | Circle 164**

A leading manufacturer of steel curtain roll-up doors, DBCI has more than 25 years of experience delivering light- and heavy-duty commercial doors, wind-rated doors, and a complete line of doors and accessories for self-storage applications. Field technicians and manufacturing and sales offices across the United States enable DBCI to efficiently provide superior products and services.

**Entrematic | Circle 165**

The heavy-duty Amarr 2742 is Entrematic



**CERAMIC INSULATING TECHNOLOGY**

**SPACE AGE CERAMICS**

# COOL ROOFS COOL WALLS

## INSULATES, REDUCES HEAT & SAVES ENERGY

### ELASTOMERIC WATERPROOFING INSULATING CERAMIC COATINGS FOR ROOFS, WALLS & MORE



**PERMAKOTE**  
WATERPROOFING CERAMIC ROOF COATING



**ULTRA SEAL**  
ELASTOMERIC WATERPROOFING INSULATING CERAMIC PROTECTIVE WALL COATING

**Warranties up to 20 Years!**

**KEEP YOUR LIVESTOCK & BUILDINGS COOLER**



**OVER 100 QUALITY PAINT & COATING PRODUCTS; CALL FOR A PRODUCT CATALOG!**



**NATIONWIDE PROTECTIVE COATING MANUFACTURERS, INC.**  
SARASOTA - FLORIDA - USA



Member Since 1997

**The PERMANENT Coating Solution™**

1.800.423.7264  941.753.7500

Circle Reader Service #463



ic's top-of-the-line, energy efficient commercial door. With triple-layer construction (27-gauge steel exterior and interior layers with foam-in-place polyurethane insulation), this door has a 19.4 R-value, one of the highest R-values in the industry. Construction also features two continuous 20-gauge steel interior reinforcing strips on each section to ensure hinges are always anchored in steel for added structural integrity. The Amarr 2742 is available with an optional pass door and up to 40-foot wide (available beginning Fall 2016), making this door ideal for custom-fit programs.

**Extrutech Plastics | Circle 166**



Extrutech All Weather doors are corrosion proof with a smooth, flat, bright white surface, 1-3/4 inch thick PVC door panel and solid PVC frame. They are available as single and double doors, in standard or custom sizes, as well as replacement door panels.



**MWI Components | Circle 167**

MWI Components is an industry-leading manufacturer of Dutch doors, bale doors and sliding doors. Powder-coated parts are offered in more than 28 colors and

more than 100 options for 29 gauge inserts. Track packages are available to finish slider installation or you can choose your own components from MWI's track and hardware catalog. Add the final touch using MWI's expansive line of Arcadian doors.

**Plyco Corporation | Circle 168**



If you're looking for a commercial, residential or agricultural door, Plyco has the right door for your construction projects. Contractors rely on Plyco for a comprehensive line of durable walk doors that meet today's building codes. Plyco offers pre-hung service doors individually packaged, pre-drilled

for lockset, and insulated with injected polyurethane foam. Plyco's extensive line of walk doors include factory-installed window lites, locksets, panic bars, pulls, plates and other accessories to fit your project needs. Plyco walk doors are perfect for post frame, metal frame and commercial buildings. In addition to walk doors, Plyco's EQUUS Dutch Door System is built tough to last and is ideal for use as an exterior or interior door for tack rooms and offices. The Champion Slide Door is designed to match the EQUUS Dutch Door in appearance to give your building project that professional touch.



**PowerLift Hydraulic Doors | Circle 169**

PowerLift Hydraulic Doors is North America's largest hydraulic door manufacturer. With more than 23 years of experience, PowerLift custom designs and installs doors for agricultural, aviation, commercial and residential projects. Each local Pow-

erLift manufacturing location offers the industry's only lifetime structural warranty.



**Schweiss Doors | Circle 170**

Schweiss Doors has been a leading manufacturer of hydraulic one-piece doors and patented Lift Strap/Autolatch bifold doors for more than 35 years. Renowned for quality craftsmanship, Schweiss' custom-made engineered doors are specially designed for many applications including commercial, industrial, agricultural, residential, hangars and designer doors.

**Trac-Rite Door | Circle 171**

Trac-Rite Door manufactures quality steel roll-up doors for a multitude of uses, including self-storage, residential, agricultural and commercial. Trac-Rite is dedicated to providing customized, worry-free, low-maintenance products that are delivered with uncompromising service.

**DOOR HARDWARE**



**CannonBall:HNP | Circle 163**

For 100 years, builders have relied on CannonBall as the original producer of round track and trolley sliding door systems. High quality Delrin wheel components, sturdy steel construction, the industry's widest selection of accessories and specialty hardware connect with a century of engi-

neering know-how to provide dependable design and long-lasting performance. Kwik Frame and Bigg Frame sliding door systems also remove the guesswork and labor associated with field-fabricated models through easy standard assemblies.



**National Hardware | Circle 172**

National Hardware's interior sliding door hardware can transform any opening or doorway. This unique, innovative design saves space and creates a decorative enclosure for any room. Interior sliding door hardware kits are ideal for creating a ver-

satile sliding door system that only takes up a few inches of floor space.



**Western Products | Circle 173**

Whether you use box track or round track, you'll find the strength, shape and size you desire in door tracks, hangers, trolleys, brackets, sliding door accessories, door-frames and more from Western Products. Choose from Western's box track options of 400- to 1,000-pound capacity, or its round track at 600-pound capacity. Most track orders are shipped from inventory within three to five business days.

**SKYLIGHTS, DAYLIGHTING**



**AmeriLux International | Circle 174**

AmeriLux International is a distributor of high-quality polycarbonate and PVC sheet products including Agrilite PVC corrugated liner panels, an economical alternative to metal. CoverLite MR9-inch



BUILT FOR POST FRAME

**THE INDUSTRY'S LEADING MANUFACTURER OF SLIDING DOOR TRACK AND HARDWARE**



**THE SABRE LATCH®**

Offering Security For Your Sliding Doors

- Exterior Lockable Polished Stainless Steel Handle
- Zinc plated Center Case with Inside Handle
- Quick Mount Bracket design installs within minutes to MWI 3300 Series Vertical Rail
- Interior latch functions even when the exterior handle is locked

**BC87 - Center Door Guide**

- Heavy 1/4" thick Zinc Plated Steel construction provides drive over protection
- Acts as the receiver for the Sabre Latch®, ensuring a complete and secure coupling
- Universally mounts to a variety of applications



1015 32nd Ave West • Spencer, Iowa 51301  
 ph: 800-360-6467 • FAX: 800-361-3452

www.mwicomponents.com



Circle Reader Service #308

When **Quality Matters**  
**SELECT THE**  
**BEST**

**SNOW RETENTION SYSTEMS**



**Snow DEFENDER™**  
**4500**

**METAL TO WOOD FASTENERS**



AVAILABLE IN  
**ANY COLOR**

**Fastgrip™**



**METAL ROOFING ACCESSORIES**



on over **1,600** Metal Roofing  
 Accessories and Fasteners



Call for a **FREE** Catalog!  
**(877) 897-7020**

[www.levisbuildingcomponents.com](http://www.levisbuildingcomponents.com)

Circle Reader Service #392

**products**

**SKYLIGHTS, DAYLIGHTING**

and MR1-inch corrugated polycarbonate panels are perfect for skylight and side-lite applications, matching most standard metal roofing profiles. Wherever you need a smooth finish that is easy-to-clean, low maintenance, hygienic and/or abuse resistant, TrussCore PVC interlocking liner panels have your job covered.

**DayStar Systems LLC | Circle 175**

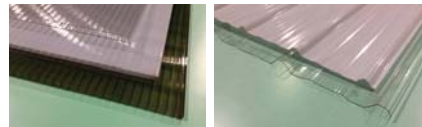


Utilizing unique technology, DayStar developed a completely natural lighting system for commercial applications, such as clinics, municipal buildings, schools, hangars, big box retail stores, man-

ufacturing plants and warehouses. Directed through an ultra-reflective shaft, natural light is amplified and dispersed evenly, regardless of the size of the building, even on cloudy days. With more uniform diffusion, no glare and hot spots, DayStar's system also extends the amount of hours electric lights can be turned off, up to 9-1/2 hours per day, maximizing energy savings. Aesthetically appealing in open environments, the super-insulated light shaft requires no attic support walls and is available in custom lengths. DayStar's complete system includes: dome, light shaft, insulated steel or aluminum roof curb to match your roof pitch and rib design, and ceiling lens. All units are powder coated to match your roof color.

**H&F Manufacturing Corp. | Circle 176**

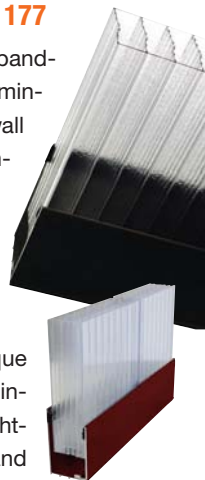
H&F Manufacturing Corp. offers two skylight and sidelight solutions. The Multi-Wall blends the characteristics of polycarbonate with the advantages of Multi-Wall design. Multi-Wall panels are available in 12 different styles/profiles. The panels offer excellent insulation properties and controlled daylight transmission and include a UV protection layer. H&F also offers Unitrex Ultra-R and Ultra-9 panels,



which are some of the strongest corrugated polycarbonate building materials available on the market. They come in clear, white opal and soft white. Both the Multi-Wall and Unitrex are virtually unbreakable yet lightweight and easy to install, plus engineered to withstand harsh weather conditions, vandalism and general wear and tear on industrial, commercial and residential structures.

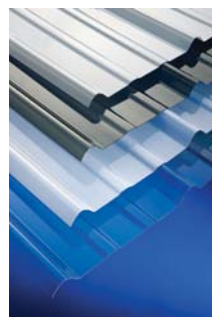
**Major Industries | Circle 177**

Major Industries recently expanded its product line with Illumin-PC polycarbonate multi-wall glazed wall systems. Illumin-PC is a versatile wall system that features 40mm polycarbonate multi-wall panels. With panel U-factors of .19 and numerous color options that allow for unique design opportunities, Illumin-PC can be used as a daylighting system for both new and retrofit applications.



**MWI Components | Circle 167**

MWI Components stocks high-quality corrugated polycarbonate sheets, characterized by their high impact resistance, available in many profiles and lengths. MWI Components is now offering polycarbonate in two new colors: natural white and solar gray in addition to clear and opal. The natural white has 85 percent light transmission vs. 90 percent for clear



and offers soft/diffused light that creates a more comfortable work environment. Polycarbonate is available in 9-inch o.c. profiles. Opal and clear are offered in an R-panel profile.



**Palram Americas | Circle 178**

Palram Americas offers SunSky polycarbonate panels for daylighting applications. Palram's proprietary MetalMatch technology allows for rapid matching of existing corrugated metal profiles. SunSky profiles feature co-extruded UV protection. In fact, SunSky is warranted for 10 years against loss of light transmission due to yellowing, and against damage due to hail.

**WINDOWS**

**AJ Manufacturing | Circle 162**



A.J. Manufacturing offers a complete line of durable high quality aluminum and vinyl windows. Options include

horizontal sliding, fixed lite, casement, single hung, double hung, thermal, non-thermal, grids and Low-E glass. Transom windows and mullion kits to combine multiple windows create attractive architectural features. White, brown, bronze, clay or custom-colored shutters, windows and trim will enhance the appearance of your next building.

**CannonBall:HNP | Circle 163**

CannonBall offers a variety of window ap-



plications for agriculture, commercial and metal building markets. The thermally-broken 2200-Series aluminum windows hold off winter's cold and are available in slider, hung, fixed and architectural shapes. Value models can be found in the 1200-Series welded vinyl construction and wide assortment of horizontal sliding, single hung, 3-lite slider, fixed and architectural shape configurations. Specialty glass is available in both series upon request.

**MWI Components | Circle 167**

MWI Components is now offering a simple and strategic line of vinyl windows for the post-frame industry. It includes single hung and horizontal sliders with 1/2-inch insulated

*"Why choose Glu-Laminated Posts?"*  
It is a question you should be asking!

**The original 0.60 CCA treatment formulation:** Time-tested successful in-ground preservative performance dating back more than 80 years.

**Treatment occurs before gluing** for maximum penetration and protection.

**Waterproof, structural glue** with a proven history of more than 150 years - stronger than the wood itself.

**A time-tested permanent foundation for your structure,** with unmatched structural capability.



701 E. Linden Street, Richland PA 17087 • Phone: (717) 866-6581 • Fax: (717) 866-7237  
1283 Joni Miller Road, Oakland MD 21550 • Phone: (301) 334-3977 • Fax: (301) 334-9289

[www.rigidply.com](http://www.rigidply.com)

Circle Reader Service #382

### Looking for more information from companies featured in this issue?

Use the Reader Service card facing this page to get **FREE** information from our advertisers!

Free online info at [www.bit.ly/info-rbfn](http://www.bit.ly/info-rbfn)

#### ADVERTISERS

RS #	Company	Page #	RS #	Company	Page #	RS #	Company	Page #
334	A J Manufacturing, Inc.	31	536	Hershey's Metal Meister	23		Power Lift Hydraulic Doors	56
291	AB Martin	53	341	Leland Industries	44	503	Replications Unlimited	16, 56
459	Akzonobel	59	392	Levi's Building Components	40	382	Rigidply Rafters	41
441	Aztec Washer Co.	53		MD Barnmaster	56	450	S-5!	49
	Bradbury Group, The	56	412	MFM Building Products Corp.	34	414	Schweiss Doors	25, 56
	Clark Industries	57	308	MWI Components	39	429	Sealtite Building Fasteners	36
316	Dynamic Fastener	13		Marion Manufacturing	56		Semmler Systems, Inc.	57
366	ECO Fasten Solar	33	306	Maze Nails Company	11	375	Starwood Rafters, Inc.	54
389	Erect-A-Tube Inc	54		Metal Rollforming Systems	56	345	Sukup Manufacturing	9
304	ESE Machines, Inc.	45	331	Metalcon	19	559	Trac-Rite Door, Inc.	20
498	East Coast Fasteners	21	597	NFBA Heartland Chapter	26	425	Triangle Fastener Corp.	35
335	Energy Panel Structures	17	378	National Frame Building Assn.	15, 55	301	VP Buildings, Inc.	12
407	Everlast Roofing, Inc.	2	463	Nationwide Protective Coating Mfrs., Inc.	37	374	Western Products of Indiana	48
	Extrutech Plastics	56		Paint Valley Parts, LTD	57	511	Wick Buildings	27
393	Fabral	4, 5	485	Petersen Aluminum Corp.	7			
359	Fasco America	49	313	Plyco Corporation	60			

The index is provided as a reader service. Occasional last-minute changes may result in ads or editorial copy appearing on pages other than those listed here. The publisher assumes no liability for omission or errors.

#### STORY RESOURCES

A listing of the products and services available from companies featured in this issue. To receive more info from these companies, circle the corresponding RS# (reader service number) on the card facing this page. **For even faster service, fax your completed card to 888-847-6035.**

RS #	Company	Page #	RS #	Company	Page #	RS #	Company	Page #
<b>FEATURES</b>			<b>METAL BUILDING SYSTEMS</b>			<b>FASTENERS: ROOF CLAMPS</b>		
101	Fabral	4	128	Armstrong Steel Buildings	28	144	Lakeside Construction Fasteners	31
102	Petersen Aluminum	6	129	Central Storage	28	145	Leland Industries	31
103	Sukup Steel Buildings	8	130	Erect-A-Tube	29	146	Levi's Building Components	32
104	Quality Structures Inc.	10	131	Heritage Building Systems	29	147	Maze Nails	32
105	Varco Pruden	12	132	Metallic Building Co.	29	148	National Nail	32
106	Graber Post Buildings	14	133	R&M Steel	29	149	Sealtite Building Fasteners	32
107	Armstrong Steel Buildings	18	134	Sukup Steel Buildings	29	150	SFS intec	32
108	Trachte Building Systems	20	135	Trachte Buildings Systems	29	151	Triangle Fastener	32
109	Valspar	22	136	Varco Pruden	29	<b>FASTENERS: ROOF CLAMPS</b>		
110	Urestone	23	<b>FABRIC BUILDINGS</b>			152	Building Products Development	33
111	Metal Sales Manufacturing	24	137	Span-Tech Fabric Buildings	29	153	EcoFasten Solar	33
112	Schweiss Doors	25	<b>FASTENERS: NAILS &amp; SCREWS</b>			154	S-5!	34
113	Erect-A-Tube	26	138	Atlas Bolt & Screw	30	150	SFS intec	34
114	Wick Buildings	27	139	Direct Metals Inc.	30	155	Sno Gem	34
<b>PRODUCT PROFILES:</b>			140	Dynamic Fastener	30	156	SnoBlox-Snojax	35
<b>POST-FRAME BUILDING SYSTEMS</b>			141	East Coast Fasteners	30	<b>ADHESIVES, SEALANTS &amp; CAULKS</b>		
125	Graber Post Buildings	28	142	FASCO America	30	157	Aztec Washers	35
126	Energy Panel Structures	28	143	Fasteners Direct LLC	31	158	Dynamic Fasteners	35
127	Wick Buildings	28						

RS # Company	Page #
159 MFM Building Products.....	36
160 Novagard.....	36
161 OSI.....	36
<b>DOORS</b>	
162 AJ Manufacturing.....	37
163 CannonBall:HNP.....	37
164 DBCI.....	37
165 Entrematic.....	37
166 Extrutech Plastics.....	38
167 MWI Components.....	38
168 Plyco.....	38
169 PowerLift Hydraulic Doors.....	38
170 Schweiss Doors.....	38
171 Trac-Rite Doors.....	38
<b>DOOR HARDWARE</b>	
163 CannonBall:HNP.....	38
172 National Hardware.....	39
173 Western Products.....	39
<b>SKYLIGHTS &amp; DAYLIGHTING</b>	
174 AmeriLux International.....	39
175 DayStar Systems.....	40
176 H&F Manufacturing Corp.....	40
177 Major Industries.....	40
167 MWI Components.....	40
178 Palram Americas.....	41
<b>WINDOWS</b>	
162 AJ Manufacturing.....	41
163 CannonBall:HNP.....	41
167 MWI Components.....	41
168 Plyco.....	44
<b>CUPOLAS</b>	
179 AG-CO.....	44
163 CannonBall:HNP.....	45
167 MWI Components.....	45
168 Plyco.....	45
<b>ROOF &amp; WALL PANEL</b>	
180 AB Martin Roofing.....	46
181 American Building Components.....	46
182 Boral.....	46
183 Central States Manufacturing.....	46
230 EDCO Products.....	46
231 Englert.....	46
184 Everlast Roofing.....	46
185 Fabral.....	46
186 MAC Metal.....	46
187 Metal Panels Inc.....	47
188 Metal Sales Manufacturing.....	47
189 North Star Metals.....	47
190 Petersen Aluminum.....	47
191 Replications Unlimited.....	47
166 Extrutech Plastics.....	47
177 Palram Americas.....	47

RS # Company	Page #
<b>RETROFIT</b>	
192 McElroy Metal.....	47
193 Nationwide Protective Coatings.....	48
<b>COIL</b>	
194 Mill Steel.....	48
195 Steel Dynamics.....	48
<b>COIL PAINT/COATINGS</b>	
196 Akzo Nobel.....	48
197 Becker Specialty Coatings.....	48
198 Dura Coat Products.....	48
199 PPG Industries.....	49
200 Valspar.....	49
<b>UNDERLAYMENT</b>	
159 MFM Building Products.....	49
<b>SNOW MANAGEMENT</b>	
160 Alpine Snow Guards.....	50
146 Levi's Building Components.....	50
154 S-5!.....	50
149 Sealite Building Fasteners.....	50
201 Snobar.....	50
156 SnoBlox-Snojax.....	50
155 Sno Gem, Inc.....	50
<b>WIND UPLIFT</b>	
202 Windbar.....	50
<b>POSTS AND POST FOUNDATION PRODUCTS</b>	
179 AG-CO.....	51
203 Best Products.....	51
146 Levi's Building Components.....	51
204 Perma-Column.....	51
205 Planet Saver Industries.....	51
206 Plasti-Sleeve Post Protection.....	51
207 Post Protector.....	51
208 Pro-Footer LLC.....	51
209 Richland Laminated Columns.....	52
<b>TRUSSES AND TRUSS PRODUCTS</b>	
210 Rigidply Rafters.....	52
211 Starwood Rafters.....	52
212 Shear-X.....	52
213 Trussmate.....	52
<b>INSULATION</b>	
167 MWI Components.....	52
168 Plyco.....	52
<b>VENTILATION</b>	
146 Levi's Building Components.....	52
167 MWI Building Components.....	53
168 Plyco.....	53
150 SFS intec.....	53

RS # Company	Page #
<b>MOISTURE &amp; VAPOR BARRIERS</b>	
214 Covertech.....	54
215 Fil d.d. Menges.....	54
<b>PROTECTIVE COVERS</b>	
216 TuffWrap Installations Inc.....	54
<b>EQUIPMENT</b>	
217 Acu-Form.....	54
218 Bradbury Company.....	54
219 Brut Post Grabber.....	57
220 Clark Industries.....	57
221 ESE Machines.....	57
222 Hayes International.....	57
223 Hershey's the Metal Meister.....	57
224 Marion Manufacturing.....	58
225 Metal Rollforming Systems.....	58
226 Roll Former Corporation.....	58
227 Semmler Systems.....	58
228 Senox.....	58
<b>FALL PROTECTION</b>	
229 Fall Protection Distributors.....	58

# REPRINT YOUR ARTICLE OR PROJECT



- Brochures, mailers, show promo
- Show you are nationally recognized
- Build prestige in your brand

**FOR REPRINTS, BROCHURES OR CATALOG PRINTING OPTIONS, CALL OR EMAIL:**

**Gary Reichert**  
gary.reichert@fwcommunity.com  
715-350-7080

**Tyler Jenson**  
tyler.jenson@fwcommunity.com  
715-318-4505

## products

### WINDOWS, CUPOLAS



glass, removable insect screens, durable, completely-welded construction, UV-stable white vinyl, cast/zinc painted window locks, continuous spacer primary seal, interior weeping system and deluxe wool-pile seals. The single-hung option offers choice of with or without grids; the horizontal slider offers the option of with or without a built-in J-channel.

#### Plyco Corporation | Circle 168

The CTBW (Commercial Thermal Break Window) is Plyco's top-of-the-line commercial quality window. It is constructed of 100 percent thermalized aluminum extrusions with 3/4-inch thermo pane glazing. Plyco also offers AATL (All Aluminum Trimline) windows, an aluminum frame window spe-



cifically designed for the metal-clad building industry. The Andersen 100 Series energy efficient window is made of "Fibrex," a revolutionary composite material with strength, aesthetic appeal and energy efficiency (Energy Star). The Andersen 100 Series window is recommended for post-frame residential and high-moisture building applications. Unlike vinyl, the Andersen 100 Series window can be painted and holds its form without warping or twisting.

### CUPOLAS

#### Ag-Co | Circle 179

Ag-Co cupolas are designed of durable, high-density polyethylene that is UV in-



hibited and will never rust or decay. Maintenance free, they retain their original appearance for a lifetime. Ag-Co cupolas combine the rigidity of polyethylene with the convenience of lightweight construction for quick and easy installation. Thirteen color combinations are offered in Ag-Co's two-piece construction that allows the builder to coordinate a design

# THE ONLY ONE-STEP FASTENER! for fiberglass or PVC panels!

**Master One-Steppers®** are the only time-saving one step screws for attaching panels that exhibit thermal expansion to wood frame structures. The revolutionary patented design self-drills an expansion hole, automatically centers, drives in and provides a cushioned expansion-seal in ONE STEP! No pre-drilling. No panel cracking!

**Master One-Steppers®** are available in 304 and 410 stainless steel, or in carbon steel with Leland's renowned long-life platings and powder coatings. Find out more today!



Toll Free: 1-800-263-3393  
[www.lelandindustries.com](http://www.lelandindustries.com)

**Demand North American Quality!**

Circle Reader Service #341

**Hexavalent Chromium Free!**  
*It's the law.*

that best accents the building and customer's tastes. Three sizes are available: 22-, 30- and 42-inch bases.

**CannonBall:HNP | Circle 163**



The elegant, traditional finishing touch on your post-frame building, CannonBall's cupolas provide ventilation as well. CannonBall cupolas are built to last, assembling easily with a unique interlocking system and a formed, stamped roof spine rounded for safety. Available in many colors, the 24-inch and 36-inch models are shipped assembled or knocked down, while the 48-inch model ships assembled in a crate, ready for installation.



**MWI Components | Circle 167**

Top 10 award-winning MWI manufactured cupolas offer the perfect decoration for any post-frame project. MWI offers 24-, 36-, 48- and 66-inch choices in its four-sided design. The company also offers an eight-sided octagon design that stands 7- or 12-feet tall. In addition to the vast color selection, customers have the option of specifying their cupolas with louvers or windows.



**Plyco Corporation | Circle 168**

Curved roof, straight roof, window kit options, premium base and more, Plyco has the cupola to add that finishing touch to your building projects. Available in 24-, 36- and 48-inch sizes, they assemble on the job site in minutes with slide-on metal connectors. Plyco cupolas can be color matched to most roll-formed steel colors. Top it off with one of several available weather vane options.



[www.esemachines.com](http://www.esemachines.com) | toll free 800-854-7361

Quality metal roofing equipment since 1976

**First and Second Stage Hand Seamers**



**Single Lock and Double Lock Hand Seamers:**

- ESE 001 Single Lock Seamer forms 90 degree
- ESE 099 Double Lock Seamer forms 180 degree

**K9 Double Lock Power Seamer**



**K9 Seamers:**

- Double Lock seams in one pass
- Adjustable height 1" or 1 1/2"
- Weighs only 40 lbs.

Made in U.S.A.

Circle Reader Service #304

**ROOF & WALL PANEL**

**A. B. Martin Roofing | Circle 180**

A. B. Martin Roofing is a manufacturer of quality metal roofing and siding panels including the ABM multi-purpose panel, the ABSeam standing seam panel and the PBR commercial panel. It provides building materials for pole buildings, including framing lumber, insulation, doors and windows, tongue-and-groove lumber, stalls for horse barns and much more.



**American Building Components | Circle 181**

ABC offers a variety of metal roofing panels and accessories backed by industry-leading warranties to ensure successful projects that stand the test of time. Its commitment to exceeding customer expectations and creating lasting partnerships is demonstrated through delivery of innovative service, technology and products, including ABC's new complete, steel building kits and roll-up doors.



**BORAL | Circle 182**

Earlier this year Boral introduced a new bevel profile for its TruExterior Siding Craftsman Collection, a contemporary style combining the popular look of traditional bevel or clapboard siding, historically seen with cedar and redwood. As a result of its blend of proprietary polymers and fly ash, the highly durable material is low maintenance, dimensionally stable,

and resistant to moisture, rotting, warping, cracking, splitting and termites. At the same time, the siding's workability exceeds that of wood and can be used in ground-contact applications with no edge sealing required.

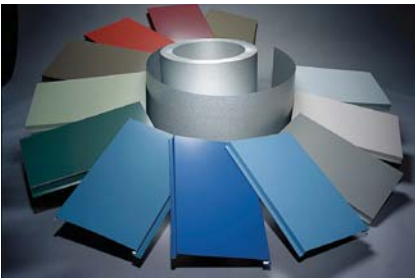
**Central States Manufacturing | Circle 183**

Central States Manufacturing Inc. produces high-quality metal roofing and building components for more than 5,000 post frame, commercial, residential and architectural customers in the United States and is renowned for service and accuracy.



**EDCO Products | Circle 230**

EDCO Products Inc. recently introduced its all-new Infiniti roofing line, representing several technology breakthroughs. This includes enhanced "Cool Roof" eco-performance; "Whisper Quiet" technology to mute outside noise; and permanent, thermal-fused textures for fade-free curb appeal. Infiniti also features proprietary four-way lock technology for exceptional wind resistance (up to 160mph).



**Englert | Circle 231**

Englert Inc. offers commercial and residential metal roofing and commercial-industrial ACP and IMP wall panel systems. It offers a wide selection of federal

Energy Star and LEED-compliant Ultra-Cool coatings produced on its newest, most sophisticated coating line. Englert offers a wide range of roof and wall panel profiles, finishes, textures, architectural details and structural options.



**Everlast Roofing | Circle 184**

Everlast Roofing's metal and siding products are uniquely superior on the market. Creating this success is the one-of-a-kind heat forming process, which prevents microscopic paint cracks. This enables the use of harder, more scratch-resistant paints. Offering a variety of gauges, colors and custom trims to suit every customer's application makes Everlast Roofing the perfect choice for the agricultural, commercial and residential markets.

**Fabral | Circle 185**

Fabral's product offering includes a wide selection of vertical panels for both standing seam and exposed-fastener roofing applications. Some of its many products include: Grandrib 3, the original 9-inch-on-center profile and one of the most versatile steel panels on the market; and 1-1/2 inch SSR, a 24-gauge classic design featuring beauty and durability. Fabral offers industry-leading warranties and an unbeatable paint system—Enduracote—that takes performance to the next level.



**MAC Metal | Circle 186**

MAC Metal offers its MAC Ten panel to the post-frame industry. This 29-gauge panel

features a Galvalume substrate, 10-year paint warranty and is available in more than 13 colors.



**Metal Panels Inc. | Circle 187**

MPI produces 15 panel profiles, including curved panels. The StrongSeam panel line is a through-fastener family of panels available in AG, PBR and Flat-Loc profiles. MPI's standing seam concealed fastener panel line includes 10 panel profiles and two curved panel profiles. All panels are available in several gauges, as well as standard and custom colors.

**Metal Sales Manufacturing Corp. | Circle 188**

Metal Sales offers a complete line of metal roof, wall and fascia panel systems for the agricultural, suburban, residential and commercial markets. Celebrating 53 years of service in 2016, Metal Sales has the expertise to service post-frame builders and its customers' needs in new construction, expansion and retrofit.



**North Star Metals | Circle 189**

North Star utilizes state-of-the-art roll forming and folding equipment to produce consistently top-quality panels and trims exactly to order. A large selection

of roll-formed panel and trim is available and CNC folding capabilities allow North Star to satisfy any custom-panel or trim requirements, including matching discontinued and hard-to-find panels. North Star also offers on-site delivery with crane-equipped tractor-trailer units and roll-off-capable gooseneck trailers.

**Petersen Aluminum | Circle 190**

PAC-150 standing seam metal roofing panels combine semi-structural performance with architectural aesthetics. PAC-150 is corrective-leveled to provide superior flatness. An optional factory-applied sealant bead can be applied for weather resistance. PAC-150 features a 1.5-in. leg height, which requires mechanical field seaming to either 90° or 180° depending on uplift requirements. A concealed-fastener clip allows for maximum design flexibility.

**Replications Unlimited | Circle 191**

The Urestone Professional Faux Stone Series represents the latest technology in large interlocking faux stone/brick panels. A key part of the product line is pre-engineered wainscot panels which are typically 42 inches high x 8 foot long with a built-in 4-inch top trim ledge. Urestone is durable, realistic and lightweight, providing energy savings and installs at half the cost of other systems.

**INTERIOR WALL PANEL**



**Extrutech Plastics | Circle 166**

The Extrutech Plastics' "stay-in-place" concrete form for poured walls is pre-cut to

project specifications and snaps together with a double-spline E-Locking system. The Extrutech FORM offers an easy-to-clean sanitary surface on both sides. The product creates a structural wall system that is builder- and customer-friendly for use in dairy, car washes or food facilities. Initially designed for 6-inch poured walls, it is also now available for 8-inch walls.



**Palram Americas | Circle 177**

Palram Americas offers AG-TUF corrugated PVC liner panels, efficient cladding for structures with many benefits for all types of agricultural professionals. These panels, with their attractive high-gloss white finish, are easy to install and provide years of durable use. These lightweight panels are a breeze to handle, and require no special equipment to install. You can cut Ag-Tuf using basic woodworking tools.

**RETROFIT**

**McElroy Metal | Circle 192**

McElroy Metal offers a quick and efficient



method for installing standing seam metal roofing directly over asphalt shingles without a tear-off. The system

is designed around a patented clip paired with the company's 138T symmetrical standing seam panel. Measuring 1-3/8 inches tall, the 138T is a two-piece mechanically seamed metal roofing system. The system utilizes 3/4-inch deep corrugated metal under the panels at the ridge, hip and headwall locations to support the panel, while providing free airflow or "above sheathing ventilation" for an added energy savings.

**Nationwide Protective Coating I**

**Circle 193**

PermaKote is a bright white, elastomeric waterproofing acrylic, insulating ceramic, protective Energy Star roof coating. It is designed as an energy-saving high-reflectivity roof coating that protects and extends the life of most any metal or other sloped roofing surface. It has a high-build formula that possesses waterproofing, insulating and soundproofing properties that beautifies and protects. Most any color is available. PermaKote offers a 12 year warranty and is one of more than 100 quality products manufactured by Nationwide Protective Coating Mfrs. Inc. of Sarasota, Florida.



waterproofing acrylic, insulating ceramic, protective Energy Star roof coating. It is designed as an energy-saving high-reflectivity roof coating that protects and extends the life of most any metal or other sloped roofing surface. It has a high-build formula that possesses waterproofing, insulating and soundproofing properties that beautifies and protects. Most any color is available. PermaKote offers a 12 year warranty and is one of more than 100 quality products manufactured by Nationwide Protective Coating Mfrs. Inc. of Sarasota, Florida.

**COIL**



**Mill Steel I Circle 194**

Mill Steel Co.'s Building Products Division proudly offers PPG, Valspar and AkzoNo-

bel paint systems on its 29- and 26-gauge panels. It also has a variety of bare steel options to paint to a customer's specific codes. Mill Steel can cover 29-, 26- and 24-gauge acrylic needs as well as provide materials for your purlin projects.

**Steel Dynamics I Circle 195**



Steel Dynamics is the only domestic steel company to have contiguous paint lines at steel production locations, offering painted steels directly to the customer. As a result of its supply chain efficiency, SDI's customers benefit from significantly reduced costs related to logistics, administrative management, coil yield, inventory, warranty claims and working capital. It offers the extraordinary peace of mind of one-stop shopping.

As a result of its supply chain efficiency, SDI's customers benefit from significantly reduced costs related to logistics, administrative management, coil yield, inventory, warranty claims and working capital. It offers the extraordinary peace of mind of one-stop shopping.

**COIL PAINT, COATINGS**

**AkzoNobel I Circle 196**

AkzoNobel manufactures high performance coil coatings for use in commercial, agricultural, architectural and residential markets. Products include Trinar, a 70 percent PVDF coating, and Ceram-A-Star 1050, industry-leading silicone-modified polyester. Both are available in a variety of



standard colors, or can be specialized with a variety of innovative colors, prints and finishes. In addition, each has a large selection of Cool Chemistry formulations which help make projects more energy efficient and sustainable.



**Becker Specialty Coatings I Circle 197**

With BeckryTech, a high-tech polymer based coating, Becker offers a system with optimum balance between properties and performance, and is available in a wide range of colors, gloss levels, metallic and pearlescent appearances. A flexible low-gloss BeckryTech coating is often used in roofing for a well-defined wrinkled look that creates the appearance of materials other than metal.

**Dura Coat Products I Circle 198**

Dura Coat Products offers two high performance coil coatings. Durapon 70 is a

**ROUND TRACK**

**YOU'RE ON THE RIGHT TRACK WITH WESTERN™**

**600-lb. capacity, smooth, easy gliding round track. Self-cleaning design, corrosive resistant 14 gauge galvanized construction.**

**(800) 553-5142** [www.westernproductsinc.com](http://www.westernproductsinc.com)

**WESTERN™**  
PRODUCTS OF INDIANA

**ALSO FROM WESTERN:** 1½" + 3½" SLIDING ALUMINUM DOOR FRAMES

Circle Reader Service #374

PVDF formulation with exceptional durability and fade resistance that is also available with thick film primer for tougher environments. Ceranamel XT40 SMP is a polymer that is harder, yet more flexible than ordinary coatings. Both are Energy Star compliant.

**PPG Industries | Circle 199**

PPG metal wall and roof panel coatings include Durastar polyester and Durastar Ultra-Cool silicone-modified polyester coatings, which are formulated with IR-reflective pigments that save energy by deflecting solar heat away from buildings. Duraform coatings are individually optimized for specific applications such as building products, HVAC equipment, doors, appliances and lighting fixtures. Duranar 70-percent fluoropolymer coatings, including Duranar Ultra-Cool and Duranar Vari-Cool coatings feature heavy

metal-free compositions for improved environmental performance, better SRI performance and wider color choice.

**Valspar | Circle 200**

Valspar offers a full range of high-performance architectural metal coatings in PVDF, SMP and polyester formulas. They are available in a full palette of colors and surface textures. Fluropon is Valspar's flagship coating, containing 70 percent PVDF resins, and offering premium protection against harmful UV rays, chalk, fade and chemical degradation. WeatherXL, the next generation enhanced silicone polyester coating, offers protection against weathering to ensure that your design lasts for years to come. Valspar's WeatherXL Crinkle Finish coating offers a unique textured appearance. Each of coating is extremely durable and have excellent film integrity and adhesion properties.

**UNDERLAYMENT**



**MFM Building Products Corp. | Circle 159**

MFM underlayments are self-adhering, self-sealing around roofing fasteners, and come with split-release liners for easy installation. Its high temperature underlayments include MFM Wind & Water Seal (40 mil), Ultra HT Wind & Water Seal (45 mil), and StormStopper FSU (45 mil). Minimum installation temperature is 50 F. Each is designed to be installed under roofing at edges, valleys, vents, skylights, chimneys, and as a whole-roof covering for secondary waterproofing protection.

**beck**  
FASTENER GROUP

YouTube f

Metal Roofing.  
Faster Than Ever.

**RoofLoc® SCRAIL®**  
for high-speed metal roofing

- Two times faster than collated screws
- Eight times faster than bulk screws
- Exceeds 500 lbs in holding power
- Collated SCRAIL® strips eliminate fastener waste
- Torque-free drive eliminates "pigtails", protects metal surface
- Leakproof EPDM-washer
- Available in all colors upon request

EPDM washer  
SteelThread SCRAIL®  
FasCoat®

**PATENTED**

Master Distributor  
**FASCO**  
AMERICA

Get professionally connected by visiting  
[www.fascoamerica.com](http://www.fascoamerica.com)  
or call 800-239-8665.

BECK Fastener Group®, FASCO America®, SCRAIL® and RoofLoc® are registered trademarks of the BECK Fastener Group.

Circle Reader Service #359

1.6 million metal roofs and counting  
**Always choose the original.**  
**Always choose the best.**

<b>S-5!® V Clamp</b>	<b>ColorGard®</b>	<b>X-Gard™</b>

**American made S-5 products are the industry standard in metal roof mounting hardware. That's why the biggest names in business rely on our snow retention solutions. They know that it's only secure, if it's S-5! secure.**

**Learn more at [www.s-5.com](http://www.s-5.com) or call 888-825-3432.**

**S-5!®**  
The Right Way!

**MADE IN THE USA**

Circle Reader Service #450



**SNOW MANAGEMENT**

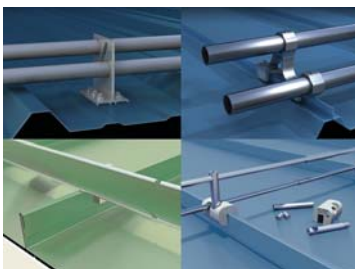
**Alpine SnowGuards | Circle 160**

Alpine SnowGuards' SnowMax fence-style snow guard for standing seam metal roofs is manufactured from aircraft-grade aluminum. It is fast and easy to install, making it cost-efficient. With increased bracket spacing (up to 48 inches), the SnowMax-U2 bracket fits standard double-lock seams and accepts a 2-inch wide color insert to match the roofing material. SnowMax is also available in configurations for corrugated metal roofing, membrane roofing and solar arrays.

**Levi's Building Components | Circle 146**



Levi's Snow Defender series offers plenty of options in several styles (for standing seam or exposed fastener panel) and over 40 quick-ship color choices. Custom colors are available. Levi's powder coated metal Snow Defenders are made in the USA from 304 stainless steel and are backed by Levi's 15-year warranty. Consult Levi's website to use its handy new mobile-friendly Snow Defender Calculator to determine your roof's exact number of snow guards needed.



**S-5! | Circle 154**

Lab testing and heavy-duty applications prove that S-5! snow retention innova-

tions are top-of-the-class. ColorGard has been outperforming all other systems for two decades and ensures a perfect color-match for the life of the roof, while the new X-Gard provides unprecedented holding strength and versatility enabling a reliable solution in even extreme circumstances. The new VersaGard joins SnoRail and SnoFence to offer a sleek, stylish design that has become a favorite among architects.

**Sealtite Building Fasteners | Circle 149**



Sealtite offers Snow Trax snow guards. Made from 16 gauge 304 stainless steel, Snow Trax requires no sealants for installation, saving money and helping to maintain a finished appearance. Powder coat paint is standard, available in 28 colors, as well as unpainted. Snow Trax comes packaged 50 pieces per box and can be added to fastener orders to save freight costs.



**SNOBAR | Circle 201**

The first patented bar system in the industry, Snobar is always one step ahead of the competition by continuing to come out with new and improved products to keep snow and ice from avalanching off of roofs. Snobar offers systems for shingle roofs, exposed fastened roofs and standing seam roofs. Why mess with a two-piece clamp when you can use a one-piece clamp that works on bulb and "T" shaped seams. Snobar systems can be painted to match the roof. New to the Snobar line is a patent-pending two-bar system.

**SnoBlox-Snojax | Circle 156**



The SnoBlox Deuce has revolutionized the polycarbonate snow guard industry with its low-profile, forward-mounted 2.5 inch high face and its sleek 1.5 inch wide waffled tapered back base that fits most roof panels without rib straddling. This patented product has stood the test of time and is an aesthetically-appealing, low-cost solution to the problem of sliding snow and ice on metal roofing. Its mounting versatility allows it to be mechanically attached on screw-down roofs or adhesive mounted on floating standing seam roofs.

**Sno Gem Inc. | Circle 155**



The Sno Barricade MEC Deck Mount snow retention bar system features a mechanically-fastened flat-base bracket, which maximizes the contact surface with the roof and ensures an extremely strong attachment. The MEC deck mount system comes in mill finish or powder/Kynar coated to match the color of the metal roof or building. Options include a 1-, 2- or 3-bar system and either 1-inch or 2-inch size bars. Additionally, Sno Gem offers both square and round bars for all the Sno Barricade systems to best match your building's profile.

**WIND UPLIFT**

**Windbar | Circle 202**

The first patented bar system with a foot to keep the middle of the panels from uplifting in high wind areas, Windbar helps to bring existing and new metal roofs up to spec. Not only does Windbar help with wind uplift, it solves many noise issues on standing seam roofs throughout the United States and Canada.

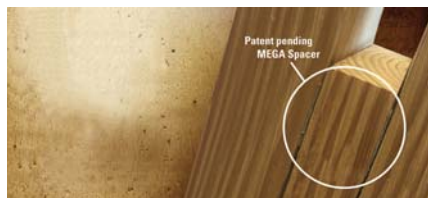
**POSTS, FOUNDATION PRODUCTS**

**AG-CO | Circle 179**



FootingPad by AG-CO has been designed and engineered to replace concrete footings of equal diameter and is ICC code compliant. This lightweight product is designed to help raise deck and post-frame buildings, while reducing project time and labor costs. FootingPad, made from recycled composite material is strong and durable, easy to carry and won't crack like concrete. FootingPad comes in three sizes: 10 inches and 12 inches which can support 4x4 and 6x6 posts, and 16 inches which can support 6x6 posts and larger.

They are the first product to combine the economy of post-frame construction with the durability of a concrete foundation. Also available are Sturdi-Wall heavy-duty anchor brackets designed to connect post-frame structures to an existing concrete foundation, and Sturdi-Wall Plus, designed for ultimate strength to connect post-frame structures to a concrete foundation while the concrete is being poured.



**Best Products | Circle 203**

Best Products recently introduced a laminated wood column with the patent pending Mega Spacer. The Mega Spacer allows the truss notch to become slightly wider than dimensional lumber width, allowing the truss and gusset plate assembly to fit easily into the pocket of the wood column. This laminated wood column reduces labor costs, adds a safer work environment and compliments its precast concrete Perma-Column foundation system, along with the concrete foundation anchor brackets for post-frame construction.

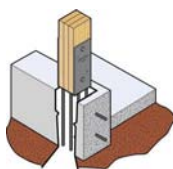
**Levi's Building Components | Circle 146**

Uplift Plates from Levi's Building Components are designed to help the post-frame builder save time, money and meet or exceed the post uplift requirements for concreted posts. These inexpensive plates can be field applied with just a framing hammer, eliminating the need for extra tools and time associated with re-



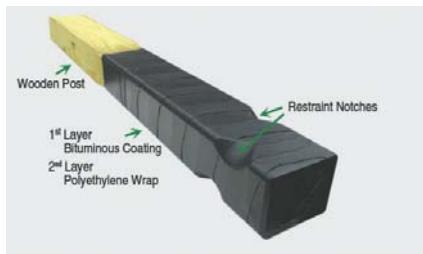
bar and other uplift technology. They're lightweight, easy to handle and easy to install. They are low cost and stronger than rebar and protect the center of the post by eliminating exposure to the elements, thereby resisting decay.

**Perma-Column | Circle 204**



Perma-Column precast concrete columns replace treated wood posts in the ground, ensuring a building's foundation will never rot.

They are the first product to combine the economy of post-frame construction with the durability of a concrete foundation. Also available are Sturdi-Wall heavy-duty anchor brackets designed to connect post-frame structures to an existing concrete foundation, and Sturdi-Wall Plus, designed for ultimate strength to connect post-frame structures to a concrete foundation while the concrete is being poured.



**Planet Saver Industries | Circle 205**

Green Post is the affordable, all-in-one solution for in-ground post decay, treatment retention and uplift restraint. Green Post double-layer wrap is factory heat-sealed to the lumber, and delivered ready to install with uplift restraint notches. When used with cement, this technique provides maximum anchorage characteristics, resisting post withdrawal generated by wind load. Green Post is non-toxic, environmentally friendly and termite tested.



**Plasti-Sleeve Post Protection | Circle 206**

First on the market by many years, Plasti-Sleeve literally created the foundation alternative category for post-frame construction. The clean fitting, easy-to-use, slide-on Post Protection sleeves provide the economical protection that many post-frame customers now expect. Quality black polyethylene plastic, over 20 specialized sizes, and great pricing make Plasti-Sleeve a smart choice for post protection. Market leadership has continued with Short-Sleeve, for economical grade-level post protection, and Plasti-Skirt, an easy-to-use plastic skirt board protector.

**Post Protector Inc. | Circle 207**



People love post-frame for speed, affordability and design flexibility. But there is one issue that gives

many consumers, builders and design professionals pause when deciding if post frame is the right choice: a soil-to-wood contact foundation. It is fact that wood in soil-contact is NOT the optimum environment for its longevity. A simple solution is Post Protector and Skirt-Board Protector "barrier" protection from Post Protector Inc. Together they effectively and affordably eliminate all soil-to-wood contact while retaining typical post-frame construction technique. Moreover, it eliminates this unfavorable impression of wood that impairs consumer confidence and industry growth.

**PRO-Footer LLC | Circle 208**

PRO-Footer offers a one-pour, post-frame foundation system that eliminates the need for post drilling and manhandling rebar. The One Pour Press-On Bracket is a below-grade wood-to-con-

## products

TRUSSES AND TRUSS PRODUCTS, INSULATION, VENTILATION



crete foundation bracket that easily and quickly attaches to wood foundation posts. Ideal for two-story decks, open-sided pavilions and most post-frame buildings, the One Pour Press-On Bracket, using patent and patent-pending technology, significantly increases wind uplift protection and load

bearing capacity. G185 galvanizing per ASTM A153, as required for below-grade applications, ensures building code compliance. A nail-on option is also available.

### Richland Laminated Columns LLC | Circle 209

Richland Laminated is the manufacturer of Quality Laminated Columns and Perma Columns. Select from 3-ply 2x6 to 4-ply 2x8, treated bottom or all treated. Richland is the "One Stop Post Shop," also selling Sturdi Wall Brackets, Post Protectors and Concrete Post Pads.

### TRUSSES, COLUMNS



### Rigidply Rafters | Circle 210

Rigidply Rafters has improved the quality of post-frame buildings by manufacturing and distributing the original 100 percent glue-laminated post. Not only are GluLam posts lighter, straighter and stronger than solid sawn posts, but they minimize cracking and splitting.

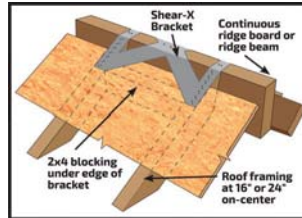
### Starwood Rafters | Circle 211

Starwood Rafters' laminated wood products include Lam-Ply Truss, the company's most popular product. It combines plywood with glulams and dimensional lumber for stronger trusses that can be



spaced farther apart. It can be used in many applications.

### TRUSS BRACING



### Shear-X | Circle 212

The Shear-X brackets are designed to transfer shear forces in roof diaphragms across the ridgeline. The brackets take the place of the connection between the roof sheathing and the continuous ridge board or ridge beam when used in blocked diaphragm applications. Shear-X brackets provide allowable shear force resistance capacities of 1,750 to 2,475 pounds depending on bracket size, framing method and roof pitch.

### TRUSS INSTALLATION TOOLS



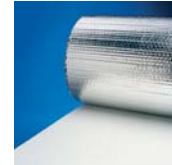
### Trussmate LLC | Circle 213

Trussmate is an easy, fast and economical way to set trusses. The Trussmate installs where you would normally use a temporary tie. It is economical because it is reusable and cuts down on labor costs. It is simple because it installs on the ground with a 1-tack nail, not in the air while standing on webbing. It is safe because no men or equipment are needed in the webbing during initial installation of the trusses. It is strong because it is made from solid aircraft aluminum. And it

is accurate because it is notched for centerline measurement.

### INSULATION

### MWI Components | Circle 167



TempShield is a technologically advanced insulation material ideal for new construction or retrofit installation in residential, commercial,

industrial, metal buildings and post-frame buildings. It consists of one or two layers of Barrier Bubble air cellular material laminated between layers of aluminum foil to provide excellent thermal resistance. Offered is a Class A/Class 1 fire rating on white poly/foil insulation. It's available in standard widths of 48 inches and special order widths up to 120 inches.

### Plyco Corporation | Circle 168



Ply-Foil is a multi layer, reflective insulation from Plyco, which comes in rolls consisting of a variety of widths and lengths for use in both specialty and standard construction

projects. Two outer layers of aluminum foil reflect 97 percent of the radiant heat. Each layer of foil is bonded to a tough layer of polyethylene for strength. The inner layers of bubble pack resist conductive heat flow while a center layer of polyethylene gives Ply-Foil additional strength. Ply-Foil provides nominal 3/16-inch thick Single Bubble, nominal 5/16-inch thick Double Bubble, Standard Edge and Staple Tab product lines for both metal and post-frame construction. Perfect for new construction or retrofit.

### VENTILATION

### Levi's Building Components | Circle 146

Levi's Building Components offers simple solutions to prevent weather element damage for varying roof profiles with FastVent Plus and FloVent—two contractor-friendly



metal roofing ridge vent closure systems. Both are easy to install with a pre-applied adhesive strip and are fire retardant and UV stable. Each fit many profiles: FloVent can be installed on the ridge cap and FastVent Plus on the eave.

### MWI Components | Circle 167

Not only does MWI supply Uni-Vent II and Uni-Vent III to ventilate with a ridge cap but also manufactures five profiles of Ridg-Vents for outstanding ventilation. Ridg-Vents exhaust air out of an attic or whole building. When used in conjunction with vented soffit, Ridg-Vents provide superior ventilation.



Customers also have the option of choosing a fiberglass diverter on some models to allow natural light into a structure. With over 100 colors to choose from, MWI can match most manufacturers' steel colors.

### Plyco Corporation | Circle 168



Plyco manufactures and distributes a variety of ventilation products designed to meet most airflow requirements.

The MWE-100 is a low profile unit, 10 feet in length with 12 square inches of free air space

per lineal foot. The MW100-25 has a higher profile than the MWE and is open at the top. The ventilator has an internal diverter to direct rain off to the side and out onto the roof. The free air space per lineal foot is 30 square inches and it is 10 feet long. The MW100-35 has the same design as the 25 series with increased free air space of 36 square inches per lineal foot. The ventilator rises 4 inches above the ridge and comes 10 feet in length. The FMW100-35 is of the same design as the 35 series but the diverter is made from translucent fiberglass. Having the translucent fiberglass diverter allows light into the building ridge while keeping the rain out.

### SFS intec | Circle 150

Available from SFS intec, ProfileVent fits most major metal panel profiles, and can be used under any ridge cap and any pitch from 2:12-20:12. Easy to install, and conveniently packed in rolls and some

## RE-ROOFING? NOT WITHOUT US! SEAL IT RIGHT, SEAL IT TIGHT! MASTER FLASH®



### ELECTRICAL MAST CONNECTION

This flashing eliminates any electrical disconnections  
The built in 20° pitch allows adaptability to almost any roof pitch including 45°  
Pipe Range: 0"-5-3/8" • Base: 15" • Standard Black EPDM Rubber  
Available Hi-Temp Grey & Red Silicone



### RESIDENTIAL

MINI Pipe Range: 1/4"-3" • #1 Pipe Range: 3"-6"  
#2 Pipe Range: 8"-11" • #3 Pipe Range: 11"-18"  
Standard Black EPDM Rubber  
Available Hi-Temp Grey & Red Silicone



1-800-WASHER 5 (927-4375)  
To see our complete product line go to  
[www.aztecwasher.com](http://www.aztecwasher.com)

Circle Reader Service #441

 **A. B. MARTIN**  
ROOFING SUPPLY, LLC  
Roofing & Siding • Hardware • Lumber



## SUNSKY®

Sky Lighting • Side Lighting • Ridge Lighting

SunSky corrugated polycarbonate panels stand up to punishing exterior applications and offer multiple advantages over traditional fiberglass corrugated panels. Up to 20 times greater impact resistance, warranted protection against yellowing, and the highest resistance to wind uplift.

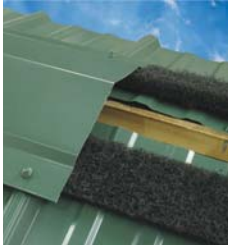


82 Garden Spot Rd. | Ephrata, PA 17522 | 717-445-6885  
35 Ridge Rd. | Newville, PA 17241 | 717-776-5951 [www.abmartin.net](http://www.abmartin.net)

Circle Reader Service #291

## products

MOISTURE/VAPOR BARRIERS, PROTECTIVE COVERS, EQUIPMENT



3-foot sticks, this patented product provides superior ventilation, the most net-free area and maximum airflow.

### MOISTURE/VAPOR BARRIERS

#### Covertch | Circle 214

rFoil patented technology, from Covertch Fabricating, is an effective energy barrier that can greatly reduce the transfer of radiant heat through siding or roofing. While most insulation materials rely on retarding the flow of heat through walls and ceilings, rFoil insulation works by reflecting as much as 96 percent of the radiant energy back away from its surface. This can



dramatically cut energy cost in air-conditioned and non air-conditioned buildings.

#### Filc d.d. Menges | Circle 215

DripStop helps fight condensation without insulation. DripStop has specially-designed air pockets that store condensation and hold it until conditions change and it evaporates back into humidity. Because it arrives at the job site already on the steel, there are no costs for installing insulation, plus it saves

time by removing one step of the building process and helps fight corrosion by adding another layer of protection from the corrosive elements in livestock confinement.

### PROTECTIVE COVERS



#### TuffWrap Installations Inc. | Circle 216

Commercial reroofing and renovation often involve the creation of dust and debris, which can have serious impacts in all types of facilities. TuffWrap provides containment solutions to protect products, property and people during construction projects. This includes customizable temporary walls, suspended cover and total enclosures that are fully sealed and utilize an antistatic, antimicrobial and flame resistant material. By professionally installing interior protection, TuffWrap limits associated risks such as product contamination or damage to assets.

### EQUIPMENT

#### Acu-Form | Circle 217

Acu-Form, a division of Paint Valley Parts, is a manufacturer of metal-forming equipment such as the ag panel, stretch wrapper, corner, post-cut shear, hemmer, slitter, J-channel, rat guard, uncoiler, table and roll, ridge cap and more for commercial and residential construction use. The company's goal is to meet and exceed customer expectations. Acu-Form uses D2 tool steel as a standard.

#### The Bradbury Company | Circle 218

The Bradbury Co. Inc. manufactures a wide range of equipment for the metal building, roofing, and post-frame industries including in-plant and portable roll formers, integrated felt wicking applicators, trim folders,

### INNOVATOR OF THE ELECTRIC BI-FOLD DOOR

#### Consider an Electric Bi-Fold Door In Your Upcoming Project

- Self-Contained Bi-Fold Doors
- Bi-Fold Door with Truss and Columns
- Value Engineered - Proven Design
- Steel or Wood Mount Applications



PO Box 100 800 624-9219  
Harvard, IL 60033 815 943-4091  
[www.erect-a-tube.com](http://www.erect-a-tube.com)

Visit us at:

[www.erect-a-tube.com](http://www.erect-a-tube.com) (800) 624-9219

Circle Reader Service #389

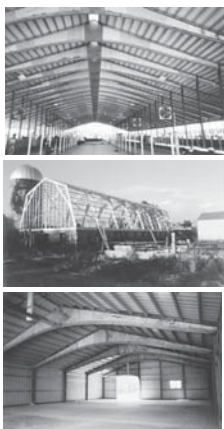
## LAM-PLY TRUSS

### The Truss That Will Carry The Load

- Spans up to 72 ft.
- Spacings up to 12 ft. on center, depending on the load you desire
- Bird Nesting Control
- Better Ventilation & Visibility
- No Feed Alley Post Obstruction
- Additional Ceiling Height

#### Starwood Rafter Uses

- Pole Sheds
- Free Stalls
- Pavilion Shelters
- Machinery Storage
- Riding Arenas
- Solar Barns



Starwood Rafters, Inc.  
W24141 Starwood Lane  
Independence, WI 54747  
(715) 985-3117 • 888-525-5878  
[www.starwoodrafters.com](http://www.starwoodrafters.com)

Circle Reader Service #375

# KNOW A CREW FOREMAN WHO DESERVES RECOGNITION?

NFBA members can nominate their most loyal and hard-working project leaders for the **Crew Foreman of the Month award**, which includes a cash prize and a *Frame Building News* article featuring the winner.

All monthly winners are automatically nominated for the prestigious Crew Foreman of the Year award, which is presented at the annual Frame Building Expo Awards Luncheon and comes with an even larger cash prize!

Learn more at [nfba.org/awards](https://nfba.org/awards)

The Crew Foreman of the Month and Crew Foreman of the Year awards are sponsored by American Building Components.

Circle Reader Service #378



# classified ads

CALL 800-726-9966

## 160 DOORS & WINDOWS

### Doors built for a lifetime.

- EVERY DOOR BUILT, DELIVERED AND INSTALLED BY LOCAL PROFESSIONALS
- LIFETIME STRUCTURE WARRANTY
- SAFE, STRONG & WEATHERTIGHT
- ZERO MAINTENANCE
- NO LOST HEADROOM
- NEW OR EXISTING BUILDINGS



**POWERLIFT**



HYDRAULIC DOORS™

855-368-9595

www.PowerLiftDoors.com

**New One-Piece** 800-746-8273

# DOORS

- AG DOORS
- SHOP DOORS
- BARN DOORS
- AVIATION

Say YES... to Strap-Lift Doors  
Say NO to Cable Lift

**HYDRAULIC** — OR — **BIFOLD**  
"One-Piece" DOOR STRAP LIFT and auto latch

**SCHWEISSDOORS.com**

Lift Straps  
Cable  
Cable

## 175 HELP WANTED



**CUSTOM  
ROLLFORMING  
CORP.**

### Career Opportunity

We are a subsidiary of a family owned company headquartered in the Midwest with operations worldwide. We operate rollforming and press lines to manufacture custom metal products for our North American customers. We are seeking a qualified **National Account Manager** with a strong sales and marketing background and experience in the steel industry. Ability to travel domestically is necessary, but relocation is not required. A successful candidate has the ability to prospect, cold call, develop leads, build customer relationships, and close orders. Previous experience in related industries or tool an die knowledge along with knowledge using CRM software, Microsoft Office, and Adobe products are a plus. Please send your resume to [hr@bradburyco.com](mailto:hr@bradburyco.com) or apply online at [www.bradburygroup.com/Careers](http://www.bradburygroup.com/Careers)

## 176 HORSE BARN & STALL BUILDER

### MD BARNMASTER BUSINESS OPPORTUNITY

The #1 PRE ENGINEERED BARN & BUILDING COMPANY, MD BARNMASTER, IS LOOKING FOR DEALERS IN SELECT STATES. MUST HAVE BUILDING KNOWLEDGE & HORSE SENSE. PLEASE CONTACT TERRY DEATON AT: [tdeaton@mdbarnmaster.com](mailto:tdeaton@mdbarnmaster.com) OR 909-354-0585

## 250 MISCELLANEOUS

### Extrutech FORM™ System

Extrutech FORM™ System brings a bright new 6" thick by 24" inch wide face to stay-in-place concrete form construction by combining standard concrete form methods with the easy-to-clean, sanitary surface that Extrutech panels provide. Perfect for process area walls.



**NEW  
PRODUCT**

Suspended Ceiling Panels and Doors also Available

888-818-0118



[www.epioplastics.com](http://www.epioplastics.com)  
email: [info@epioplastics.com](mailto:info@epioplastics.com)



Manufacturing American-Made PVC Panels for 22 Years!

**EXTRUTECH PLASTICS, INC.**

### STONE WAINSCOT PANEL SYSTEM

**Large, Lightweight, Durable**

~96" w x 43" h  
phone: 314-524-2040  
[www.urestonepanels.com](http://www.urestonepanels.com)

## 400 ROLL FORMERS



- Automation Systems
- Metal Construction Rollformers
- Coil Processing
- Forming & Fabrication
- Recondition Existing Machines

**WE ADD THE VALUE TO METAL**

1-888-865-8740 [www.marionmanufacturing.com](http://www.marionmanufacturing.com)

**BRADBURY**  
THE BRADBURY CO., INC.

### We Build Machines... We Sell Solutions

Panel Lines	Ridge Cap Benders
Standing Seam Lines	Insulated Panel Lines
Control Retrofits	Portable Roll Formers
Trim Roll Formers	Hemming Roll Formers
Hydraulic Folders	Slit & Recoil Lines
Garage Door Lines	Purlin Lines

620.345.6394 [www.bradburygroup.com](http://www.bradburygroup.com)

**MRS**  
METAL ROLLFORMING SYSTEMS

### The Affordable Rollforming Equipment Manufacturer

- Single & Double Deck Rollformers
- Trim Rollformers
- \*NEW\* Patriot Rollforming Line
- Coil Reels
- Precision Cut Slitting Lines
- Sheet Stackers
- Coil Upenders
- Ridge-Cap Press

1.888.284.6794 [www.mrsrollform.com](http://www.mrsrollform.com)

**400 ROLL FORMERS**



**Acu-Form**  
ROLL FORMING EQUIPMENT

*Manufacturer of metal forming equipment, for commercial and residential construction use.*

**We use D2 tool steel as a standard.**

Phone (330) 674-4003 Fax (330) 674-4035

**600 TOOLS/EQUIPMENT DISTRIBUTOR**

**Make Your Own Nail-Lam Column**



**BIG RED III**  
Total Fabricating System *Your One Stop Shop*

Ph: 605-787-4765  
jimsemmler1@msn.com  
www.semmlerinc.com

**See In Motion**  
www.semmlerinc.com/vid.php



**Clark Industries, Inc.**  
*Since 1967 - Monett, Missouri*



Considering equipment?  
Consider Clark.

- Roof & Floor Truss Presses
- Multi-Head Truss Presses
- Modular Truss Presses
- Shuttle Presses
- Jack Presses
- H.D. Chord Splicers
- Post & Column Machines
- Floor Truss Machines
- Electric Horizontal Stackers
- Electric Peak-up Stackers
- Conveyor Systems
- Custom Machinery

Call us toll free at: 800.743.9727  
or visit us on the web at: [www.clark-ind.com](http://www.clark-ind.com)

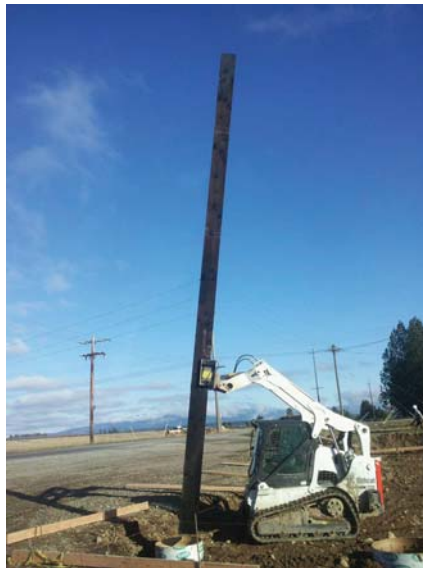


CTL/slitter lines, fully-automated trim lines, and related coil-processing equipment. All Bradbury machines are engineered for easy operation and durability.



**ESE Machines | Circle 221**

ESE machines manufactures and sells hand seamers for single-lock and double-lock standing seam metal roofing. ESE Power Seamers run on pre-formed seam widths ranging from 1/2-inch to 7/8-inch. ESE also supplies tong, dollies and cleat bending tools for specific to single- and double-lock forming.



**The Brut Post Grabber | Circle 219**

Never manhandle heavy posts again. The Brut Post Grabber skid steer attachment makes easy work of post placement. This innovative attachment was designed and developed by a post-frame building contractor. The Brut solves problems of safety, physical strain and hole sloughing. And, it's made in the USA.

**Clark Industries Inc. | Circle 220**

Clark Industries Inc. has been supplying the building components industry with manufacturing equipment, parts, and service since 1967. Equipment made in-house includes roof truss gantry systems, multi-head truss presses, floor truss machines, column laminators, hips and jacks machines, post nailing machines, truss stacking systems, conveyors, strapping lines, and custom equipment.



**Hayes International | Circle 222**

The Challenger Series, manufactured by Hayes International, is a rollforming production line that is built for lasting performance and ease of operation. These lines are equipped with a Beck Automation SII control system that is capable of office-to-shop download. Speed packages are available up to 200 FPM with sheet accuracy of plus or minus 1/16th of an inch (1.5mm).

**Hershey's the Metal Meister | Circle 223**

Hershey's the Metal Meister LLC is a family-owned and operated company based in the prairies of central Illinois. Hershey's owns the North American patent rights to build the world's leading long folding machines: the Variobend USA. Between Hershey's



and its sister company, ASCO GmbH from Germany, there are now more Variobend long folders manufactured worldwide per year than any other brand.



**Marion Manufacturing | Circle 224**

Marion Manufacturing adds the value to the metal by designing, fabricating and installing custom manufacturing and production machinery. Marion specializes in metal forming equipment such as roll formers, uncoilers, shears, stackers, etc. Marion Manufacturing also offers a full-service machine shop and re-tooling and service on other brands of equipment.



**Metal Rollforming Systems | Circle 225**

Metal Rollforming Systems designs and manufactures industry-leading roll forming equipment and accessories. MRS' product lines consist of single- and double-deck roll formers, single- and multi-

trim roll formers, slitters and more. MRS takes great pride in customer support both before and after the sale.



**Roll Former Corporation | Circle 226**

Roll Former Corporation has been in business since 1978, designing and manufacturing machinery for the metal roofing and construction industries. Today it offers more than 25 standard product pieces of equipment made in the USA.



**Semmler Systems | Circle 227**

Semmler's Big Red 111 for fabricating wood laminating columns features a new design that contains 10,000 nails in one loading. Special design of in-line equipment best saves plant layout space and requires only one operator for the total system. Total system equipment includes the Big Red fabricator, conveyor system, gusset press, planer with chip collector, bunk-stacking cart

with flanged wheels and track. Also available is the finger-joint system that features unique finger-joint detail. It's available with jib crane, with vacuum lift and scissor lift.



**Senox | Circle 228**

With its compact, lightweight design, Black MAX punches are convenient and superior to other bulky outlet punches. The mated element system between the blade and the die ensures a perfect cut every time. Install outlets from start to finish in less than 30 seconds. With its sturdy construction and minimal moving parts, Black MAX punches are built tough and backed by a lifetime exchange policy. If it breaks, Senox promises to replace it at no cost to you.

**FALL PROTECTION**



**Fall Protection Distributors LLC | Circle 229**

The Standing Seam Roof Anchor is the industry's lightest and most universal fit fall protection anchor for standing seam roof systems. It fits over 500 different seam profiles and only weighs 4.5 pounds. It is OSHA/ANSI compliant to the 5,000 pounds standard and made in the USA with a lifetime warranty.



**AkzoNobel**

**In all seasons  
and climates,  
CERAM-A-STAR®  
1050 sets the  
standard.**

Consistent, reliable  
and proven paint  
performance  
that stands the  
test of time.

CERAM-A-STAR 1050 coatings for prepainted metal have stood up to the harshest of elements throughout years of real-world exposure. Providing you with superior chalk and fade resistance and exceptional gloss retention. CERAM-A-STAR 1050 is in it for the long haul.

Discover CERAM-A-STAR 1050's benefits at  
[www.akzonobel.com/ccna](http://www.akzonobel.com/ccna)

SINCE 1951

FASTENERS & CLOSURES  
RIDGE VENTS  
STALLS  
CHAMPION DOORS  
TRACK & HARDWARE  
COMPONENTS  
CUPOLAS  
WALK DOORS  
COMMERCIAL  
**BUILD PLYCO**  
DUTCH DOORS  
INSULATION  
WALL VENTS  
METAL BUILDING SYSTEMS  
**STRONG**

## ONE WORD IN CONSTRUCTION EXCELLENCE

Since 1951, one word in the post frame and commercial construction industry has become synonymous with quality products and excellence in customer service – **PLYCO**. Plyco continues to stand by you and their commitment to providing a full line of products that surpass building codes and customer expectations. **Build PLYCO Strong**



**PLYCO**  
CORPORATION  
Elkhart Lake, Wis.

[www.plyco.com](http://www.plyco.com) • 800.558.5895

WINDOWS • WALK DOORS • WALL VENTS • RIDGE VENTS  
SLIDING DOOR TRACK • SLIDE DOOR RAILS • PLY-FOIL INSULATION  
HORSE STALLS • FASTENERS & CLOSURES • SPECIALTY PRODUCTS

**NFBA**  
BUILDING OF THE YEAR  
*Supplier*

