

Rural Builder®



PLUS!
Products to
Build Dreams



August 2017 • Volume 51, Issue 5

SOURCE BOOK

nine

Cutting-edge ideas
to inspire your
next **construction**
innovations

9

DESIGNED FOR YOU. DESIGNED TO LAST.



Sukup

STEEL BUILDINGS



Whether you need an agricultural building to house livestock, materials, or large machinery, or you are looking for an industrial or commercial structure, you can have it with a Sukup Steel Building.

Why Purchase A **SUKUP STEEL BUILDING?**

- *Clear Span up to 200'*
- *Purlins, Girts, and Eave Struts are pre-punched to ensure proper fit & faster installation.*
- *Factory Welded Clips mean fewer pieces & bolts, lowering construction costs.*
- *Purlins, Girts, and Eave Struts are galvanized for long life.*

 Find your local Sukup Dealer:
www.sukup.com/Dealer-Locator



Editor

Sharon Thatcher
sharon.thatcher@fwmedia.com
715-245-5767

VP Advertising Sales

Kevin D. Smith

Advertising Sales

Gary Reichert
gary.reichert@fwmedia.com
715-350-7080

Publication Design

Nicole MacMartin

Production Coordinators

Kathy Budsberg
kathy.budsberg@fwmedia.com
715-257-6020

Patti Kirchner

patricia.kirchner@fwmedia.com
715-318-0839

Subscription Services

386-246-3452

Office Phone

715-445-2214

Office Fax

715-445-4087

F+W MEDIA

Chief Executive Officer Thomas F.X. Beusse

Chief Operating Officer Joe Seibert

Chief Content Officer Steve Madden

Chief Technology Officer Joe Romello

SVP, General Manager- F+W Crafts Group

John Bolton

**SVP, General Manager- F+W Fine Art,
Writing and Design Groups** David Pyle

**SVP, General Manager- F+W Outdoors and
Small Business Group** Ray Chelstowski

Managing Director - F+W International

James Woollam

VP, General Counsel Robert Sporn

VP of Human Resources Gigi Healy

VP, Manufacturing & Logistics Phil Graham

Rural Builder (ISSN: 0888-3025) Volume 51 Number 5 is published monthly, except January, April, June and November, by Krause Publications, a division of F+W Media, Inc., 700 E. State Street, Iola, WI 54990-0001. Periodical postage paid at Iola, Wis., and at additional mailing offices. Canadian Agreement Number: 40665675. POSTMASTER: send address changes to Rural Builder, Circulation Department, PO Box 420235, Palm Coast, FL 32142. Copyright 2014 by F+W. Rural Builder and its logo are registered trademarks. Other names and logos referred to or displayed in editorial or advertising content may be trademarked or copyrighted. Rural Builder assumes no responsibility for unsolicited materials sent to it. Publisher and advertisers are not liable for typographical errors that may appear in prices or descriptions in advertisements. Mailed free to rural contractors and their suppliers throughout North America. Others may subscribe: \$29.98 for 1 year, \$55.98 for 2 years, and \$79.98 for 3 years in the U.S.; \$39.98 for 1 year, \$74.98 for 2 years in Canada.



Welcome to the **SOURCE BOOK**

9

Post-frame and steel-frame buildings continue to grow in popularity. Behind the success are advances in materials and techniques that have taken the once simple box to new levels of design and function. Our annual *Rural Builder Source Book* shines a light on this evolving design by showing examples of great post-frame and steel-frame

projects, as well as all the products that go into making them. We hope it will inspire you to build better buildings that will continue to help further the industry. Please take some time out of your busy day to take a look and to keep it for future reference.

-The Editors

PROJECTS

- | | |
|--|--|
| 4 HOUSING COMMUNITY HORSE BARN
<i>from McElroy Metal</i> | 18 GROCERY STORE
<i>From Replications Unlimited</i> |
| 6 WEDDING BARN
<i>from Graber Post Buildings</i> | 20 WATER TREATMENT FACILITY
<i>From S-5!</i> |
| 8 PILOT TRAINING AND CONFERENCE FACILITY
<i>From Astro Buildings</i> | 22 GARAGE/PERSONAL STORAGE
<i>From Becker Specialty Coatings</i> |
| 10 CHURCH
<i>From Varco Pruden</i> | 23 OFFICE BUILDING
<i>From Wick Buildings</i> |
| 12 PRIVATE RESIDENCE
<i>From Morton Buildings</i> | 24 PRIVATE RESIDENCE
<i>From Valspar Corporation</i> |
| 14 HARDWARE STORE
<i>From Levi's Building Components</i> | 25 VETERINARY CLINIC
<i>From North Star Metals</i> |
| 16 GRAIN HANDLING STATION
<i>From Sukup Steel Buildings</i> | 26 EQUIPMENT SHOP
<i>From Schweiss Doors</i> |

PRODUCTS

- | | |
|--|---|
| 27 ADHESIVES, SEALANTS, CAULKS | 46 INSULATION |
| 27 BUILDING PACKAGES
<i>(Post Frame/Metal Frame)</i> | 48 METAL CONSTRUCTION COMPONENTS
<i>Coil/Paint Coatings/Steel Framing</i> |
| 30 BUILDING PANELS
<i>(Roof & Wall)</i> | 49 METAL ROOFING PRODUCTS
<i>Cupolas/Retrofit & Recoatings/Underlayment/Snow Management</i> |
| 32 DOORS | 52 MOISTURE/VAPOR BARRIERS |
| 35 DOOR HARDWARE | 53 SOFTWARE |
| 36 EQUIPMENT | 53 TRUSSES/TRUSS ASSEMBLY PRODUCTS |
| 37 FALL PROTECTION | 53 VENTILATION |
| 38 FASTENERS, CONNECTORS
<i>Nails/Screws/Roof Clamps</i> | 54 WINDOWS/SKYLIGHTS/ DAYLIGHTING |
| 44 FOUNDATION PRODUCTS | |

42 AD INDEX

56 CLASSIFIED ADS

Cover photo courtesy of McElroy Metal, featured on page 4.
Design by Nicole MacMartin.

LOCATION:

Marlboro Ridge Equestrian Facility Horse Barn, Upper Marlboro, MD

SIZE: 9,821 sq. ft.
(38'W x 92'L x 30'H)

CONTRACTOR:

Fuog Interbuild Inc., Purcellville, VA

WALL AND ROOF PANEL:

McElroy Max-Rib 29-gauge with PVDF finish; Hardiplank lap siding for gables.

INSULATION:

Bass latex caulk, Great Stuff window and door foam, Hilti Fire Caulk, Kraft EcoBatts, and FSK facing

DOORS:

Mesker steel doors and Lemieux wood doors from Otter Creek Mill Works

WINDOWS:

ProFinish and Silverline by Andersen Windows

FASTENERS:

Simpson Strong-Tie deck screws, nails from Maze Nails and Paslode, Timberlok screws, and Simpson Strong-Tie hangers



HOUSING COMMUNITY HORSE BARN

McElroy Metal

www.mcelroymetal.com

...

The Marlboro Ridge Equestrian Facility Horse Barn is for use by the Marlboro Ridge housing community. It was voted the National Frame Building Association's Building of the Year in the category for Horse Barns greater than 5,000 square feet. The building and other equestrian facilities were promised to the community, but put on hold during the recession. Construction, which is 95 percent post-frame, started in March 2015—the barn has 22 stalls, a large tack room, office, laundry, three restrooms, a finished apartment above a bump-out for a full-time grounds keeper, hay storage, feed rooms and a stand-alone utility room. Construction was completed in April 2016.

► For more product information on **MCELROY METAL** circle #241.



SIMPLE YET SIGNIFICANT



ADDING MAGNESIUM TO OUR METAL: A SIMPLE CHANGE, SIGNIFICANT RESULTS.

THE NEXT GENERATION is here and more corrosion resistant than ever. *Simple changes with significant results* does not always require the re-invention of the wheel. We have taken the already proven Galvalume® steel which is protected by an alloy coating of zinc and aluminum and introduced magnesium to create Everlast Roofing's registered AZM® steel with Activate Technology. By introducing magnesium into the zinc-aluminum coating we improved the galvanic protection by "activating" the aluminum. The result is more efficient and more effective corrosion resistance.

**Everlast
Roofing, Inc.**

OUR NAME SAYS IT ALL

Colorbond®

AZM
WITH ACTIVATE TECHNOLOGY

Circle Reader Service #407

EVERLASTROOFING.COM | 888.339.0059



WEDDING BARN

Graber Post Buildings

www.graberpost.com



Owner Bill Abraham arrived at Graber's complex looking to complete a multi-functional wedding barn that would make each couple's big day a special one. This structure features many components ranging from nail-lam posts, cathedral trusses, G-rib panels and trims that were all manufactured at Graber Post, allowing project completion in a timely manner.

► For more product information from **GRABER POST** circle 242.

LOCATION:
Spencer, IN

BUILDING SYSTEM:
*Graber Post Buildings
Post Frame*

SIZE:
*Main 50' x 100' x
14' w/16' x 100' x
9' Lean-To*

ENGINEER:
Brook Tarr

WALL AND ROOF PANEL:
*40-year-warranty 29 gauge
G-rib metal panel*

SNOW GUARDS:
Graber Post Snow Bar

INSULATION:
*Sidewall (R19 6"
fiberglass batt);
Roof (R5 1" Thermal
3HT w/ R19 6"
fiberglass batt)*

SINCE 1951



BUILD PLYCO STRONG



- DOORS • WINDOWS • FASTENERS & CLOSURES
- CUPOLAS • COMPONENTS • STALLS • INSULATION

Since 1951, Plyco has stood by you and by their products. Plyco offers a complete line of products that surpass building codes and customer expectations. At Plyco, we've become the leader by delivering the quality products you and your customers demand. **Build Plyco Strong.**



PLYCO

CORPORATION

800.558.5895 • Fax: 800.257.5926 • www.plyco.com • Elkhart Lake, Wis.

Circle Reader Service #313

**GO GREEN,
SAVE GREEN!**



Our factory installed solar panels help you save the environment and your wallet!

FABRAL[®]
METAL WALL AND ROOF SYSTEMS

Fabral.com | 800.884.4484

© 2017 Fabral

Circle Reader Service #393



AIRPLANE PILOT TRAINING AND CONFERENCE FACILITY

Astro Buildings

www.astrobuildings.com

•••

This multi-functional building is used as an event center and airplane hangar for a seed dealer and insurance agent. The local high school uses it for basketball practice. Farm shows and a flight training school also utilize its spaces. On a day-to-day basis it shelters a Cessna 206 and Husky for crop scouting and aerial photography of crop damage.



► For more product information about **ASTRO BUILDINGS** circle 243.

LOCATION:

Ong, NE

SIZE:

3,456 sq. ft.

- Wing 1: 48' x 54'
- Wing 2: 24' x 36'
- Wall height: 14' 6"

ASTRO DEALER:

Bill Miller

EXTERIOR PANEL:

Fabral Grand Rib III Plus 29 gauge high-tensile strength "full hard" steel; Dark brown roof and wainscot; bright white siding; 9' x 36' porch; 40' x 14' Power Lift door; 12' x 12' OHD; (3) 24" cupolas; (4) Plyco #20 and (1) #92 doors with glass; (7) 4 x 3 Gerkin windows with 14 x 39" shutters

FOUNDATION TYPE:

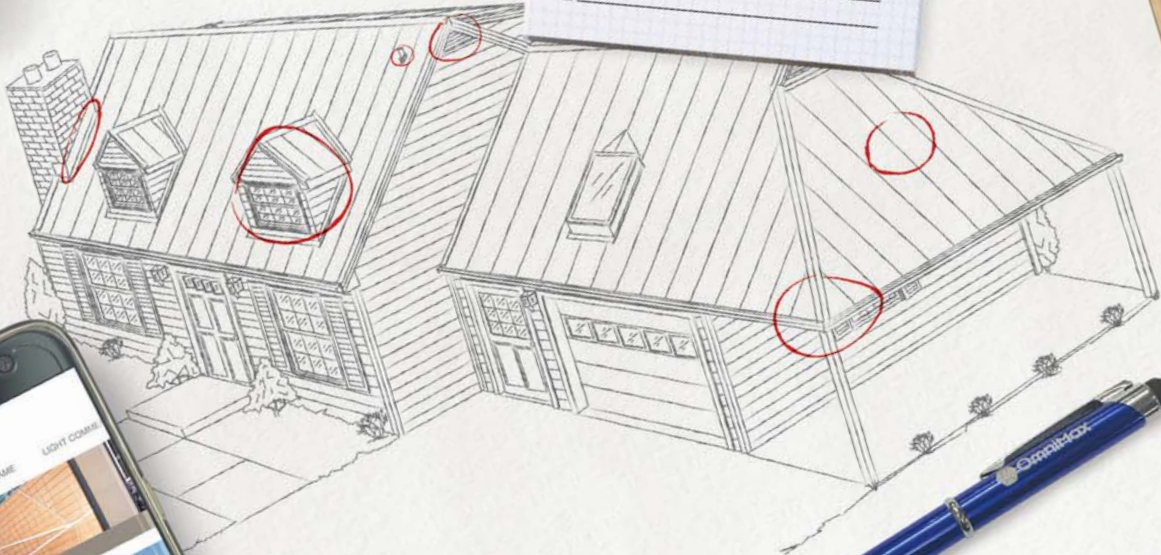
Frost-protected thickened edge concrete footing with Perma-Column Sturdi-Wall bracket

Get full access to your total system building needs.



BUILD LIST:

- METAL PANELS
- UNDERLAYMENT
- FASTENERS
- FLASHING AND TRIM
- SOFFITS
- VENTING AND CLOSURES
- SNOW RETENTION
- CUPOLAS
- DOOR AND DOOR TRACKS
- PIPE BOOTS
- CUSTOM COPPER CUPOLAS
- DORMERS, SPIRES AND FINIALS
-



FABRAL®

METAL WALL AND ROOF SYSTEMS

Fabral.com | 800.884.4484

© Fabral 2017

Circle Reader Service #393



CHURCH

Varco Pruden
www.vp.com



A very complex framing plan went into the making of this Texas church, with lean-to frames, stack frames and retro-fit framing. TPO roofing membrane was used to create fascades that could be built up and covered with SLR. The bell tower was constructed with structural tube steel bur erected in and around the pre-engineered framing. The project was \$1.5 million over budget when VP builders got involved. Making dimensional and alignment changes and converting the project to a Varco Pruden pre-engineered building made it possible to get the project back on budget. The church is already beginning its next building phase.

► For more product information from **VARCO PRUDEN** circle 244.

LOCATION:

St. Thomas the Apostle Catholic Church, Fort Worth, Texas

ARCHITECT:

Khiet Nguyen, CNK Architects, Bedford, Texas

SIZE:

21,431 sq. ft.

BUILDING SYSTEM:

VP Rigid Frame, Continuous Beam

BUILDER:

M&F Litteken Co.

ROOF PANEL:

VP SLR II in Cool Dark Bronze

WALL PANEL:

Stone and EIFS wall systems

Proud to be a leader in sustainable innovation.

Sustainability is at the heart of everything we do at AkzoNobel. That's why we are proud to deliver a new generation of primer to the building products industry. Our new primer offers effective corrosion protection and is formulated without chrome, so it is safer for our employees and our planet.

To learn more, visit:
www.akzonobel.com/ccna
or contact us at:
coil.coatings@akzonobel.com

Circle Reader Service #459



PRIVATE RESIDENCE

Morton Buildings
www.mortonbuildings.com



Country charm oozes from this Morton Buildings home located in western Illinois. Clear-span construction allowed for maximum flexibility for the design of floor plans and other features. Porches and wainscoting helped to personalize the project, which also features Morton's Energy Performer Insulation Package that delivers an efficient option in heating and cooling. The Morton Hi-Rib steel siding and roofing promises virtually no maintenance.

► For more product information from **MORTON BUILDINGS** circle 245.

LOCATION:
Beardstown, IL

SIZE:
*30' W x 8' 9" H x 78' L,
Plus 30' W x 8' 9" H x 32' L*

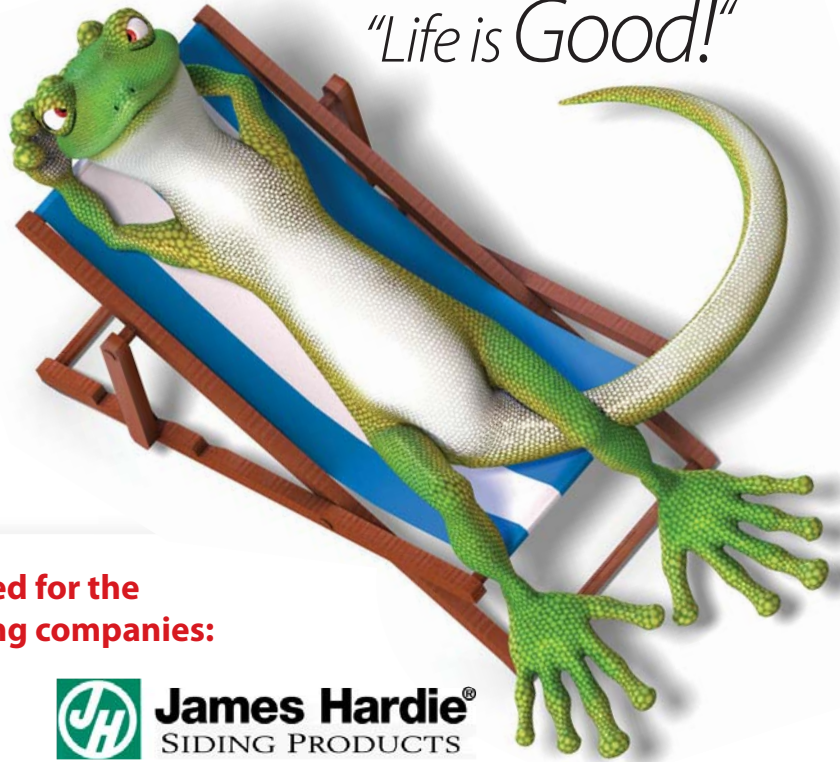
BUILDING SYSTEM:
Morton Buildings

ROOF AND WALL PANEL:
Morton's Hi-Rib Steel

INSULATION:
*Morton's Energy Performer
Insulation Package*

Add Some
COLOR
 To Your Life!

"Life is Good!"



- Color matched nails save time and labor on prefinished jobs
- Engineered for both face and blind nailing applications
- Available in double hot dip galvanized coils, collated sticks and hand drive
- Hammer caps included with each 5-lb. box of hand driven nails to reduce paint chipping

Designed for the following companies:



James Hardie®
 SIDING PRODUCTS



Fiber Cement Products by Plycem



SMARTSIDE®
 TRIM & SIDING



5-lb. boxes of 8d (2-1/2") painted, hand-driven nails are kept in stock - 6 boxes per case.

If the installer prefers MAZE coil nails or MAZE stick nails for pneumatic nailers, we can paint those nails too.



Contact us for details on MAZE Painted Nails today!
800-435-5949 • mazenails.com

Circle Reader Service #306

When **Quality Matters**
SELECT THE
BEST

SNOW RETENTION SYSTEMS



Snow DEFENDER™
6500

METAL TO METAL FASTENERS



Metalgrip™

Safe. Secure. Sealed.

METAL ROOFING ACCESSORIES

FloVent™
R120

NEW!



on over **1,600** Metal Roofing
 Accessories and Fasteners



Call for a **FREE** Catalog!
(877) 897-7020

www.levisbuildingcomponents.com

Circle Reader Service #392



HARDWARE STORE

Levi's Building Components

www.levisbuildingcomponents.com



After a fire destroyed the community's only hardware store, the father and son team of Aaron and Leon King built a 6,000 square foot store to help fill the void. Before long, a new and bigger store was needed and today it has been replaced with this 24,000 square foot store in a new location. Snow Defender 4500 Snow Guards from Levi's Building Components help protect the many pedestrians and outdoor displays.

► For more product information from **LEVI'S** circle 246.

LOCATION:

*Honey Brook Hardware Store,
 Honey Brook, PA*

BUILDING SYSTEM:

Corle Building Systems

ARCHITECT AND CONTRACTOR:

Hoover Building Specialists

WALL AND ROOF PANEL:

A.B. Martin ABSeam

SIZE:

24,000 sq. ft.

SNOW GUARDS:

*Levi's Building Components
 Snow Defender 4500*

Dura Coat Products has a coating that's ideal for every project and budget.



One Call. Many Solutions.

APPLIED SCIENCE

Clockwise from left: field-applied water-based Hydropon; premium Durapon 70 PVDF for Monumental applications and Ceranamel, a versatile family of polyesters. At bottom: Residential is a growth market for coil-coated metals.

DURA COAT PRODUCTS, INC.

RIVERSIDE, CALIFORNIA
 (951) 341-6500

HUNTSVILLE, ALABAMA
 (256) 350-4300



www.duracoatproducts.com



JUGGLING VARIOUS PROJECTS, MEETING ASSORTED PARAMETERS AND MANAGING DIFFERENT BUDGETS IS CHALLENGING. But selecting best solutions for each job is One-Call Simple. The choices and alternatives available from Dura Coat Products gives you multiple options for your coil-coating needs.

Durapon 70 For first string performance, Durapon 70™ (PVDF) is outstanding for monumental, roofing and side panels, corrosive exposures and thick film applications. It is harder and more flexible than other premium PVDF coatings.

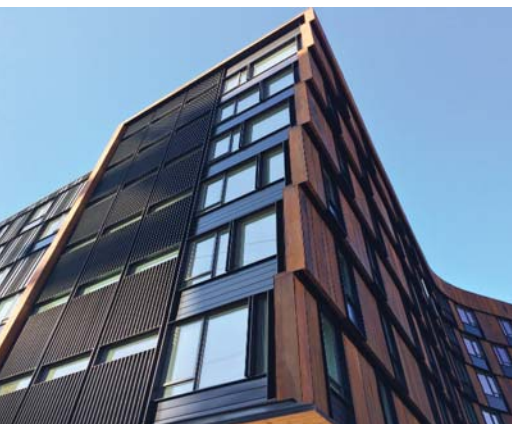
XT-40S Ceranamel Or you can go with High Durability Ceranamel™ XT40S that performs well in all outdoor environments with its ceramic/porcelain-type finish. Both coatings meet Cool Roof and Energy Star criteria and are available in various gloss finishes.

For commodity applications, Ceranamel XT-10 and -20 are ideal for garage door, rain ware, window and door frames and T-bar applications.

hydropon. To extend the life of older metal roofing and siding that has faded and chalked, or for a brand new look, Hydropon is a field-applied, water-based, air-dry coating that makes old roofing look new again. It is so versatile it can even be applied to wood, concrete, Hardie Board or elastomeric-coated roofing.

You can call on the Dura Coat Products, an Axalta Coating Systems Company, for its many solutions and coating specialists to help with all your coating needs. For more information about the full line of exceptional coatings, **call 951-341-6500 or 256-350-4300 or email info@duracoatproducts.com**. Your choice.

Circle Reader Service #581





GRAIN HANDLING STATION

Sukup Manufacturing Co.

www.sukup.com



Four connected buildings and state-of-the-art technologies make up this grain handler's dream station. Almost all of the equipment is Sukup, making it perhaps the most complete operation of its kind manufactured by one company. "It really shows off a lot of what we do," said Steve Sukup, chief financial officer of the family-owned Sukup Manufacturing Co. While the company has been making hopper bins since about 2003 and steel buildings since 2011, it only recently began making its own hopper bin support structures. It has enabled the company to make several "hopper buildings" to make grain loading more efficient. The owner of this building complex said he is able to unload 2,500 bushels of grain in less than five minutes.



► For more product information from **SUKUP** circle 247.

LOCATION:

Patterson Farms,
Fillmore, MO

BUILDING SYSTEM:

Sukup Steel Building

SIZE:

4,400 sq. ft.
incorporating four
buildings and an 18 ft.-
diameter hopper bin

UNIQUE FEATURES:

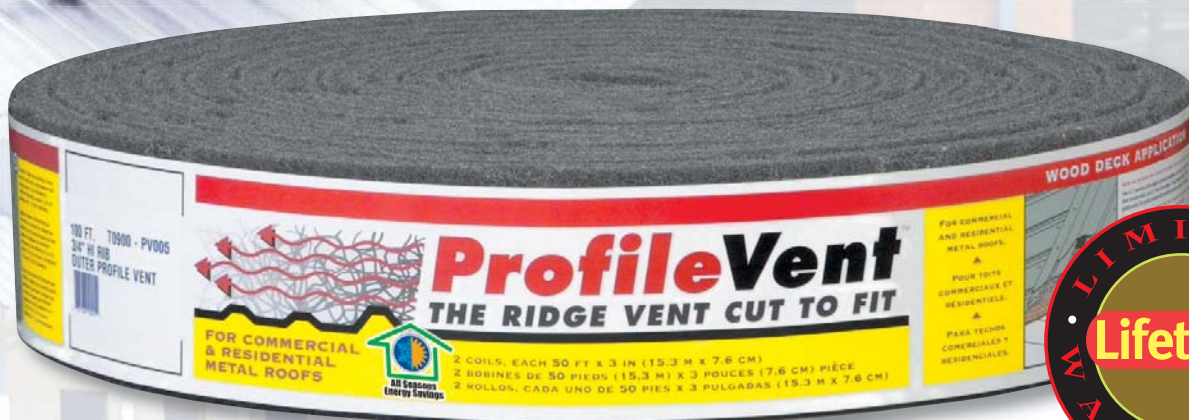
Customized flashing wraps around the hopper and attaches to the building roof. A substructure design provides wider side-to-side clearance for trucks. The loading/unloading area is climate controlled. Overhead doors at each end of the facility provide easy access.



Superior Quality. Superior Value. Class A Fire Rated.

Proven performance for over 20 years.

Cut to fit—**Standing Seam** and
Screw-Down Panels in over
40 Profiles for Commercial, Agricultural
and Residential Metal Roofs.



ProfileVent... Preferred By Contractors

- Lifetime limited warranty
- Glue spots on screw-down panels prevent slipping during installation (most profiles)
- Fits under almost any ridge cap
- Fits roof pitch 2:12–20:12
- One person roll-out installation
- Won't crack, dent or rust during shipping or installation
- Miami-Dade approved Noa No.: 07-0626.08

ProfileVent[®]
THE RIDGE VENT CUT TO FIT

profilevent.com

Ask your roofing material supplier.

Available through SFS Intec Inc.

800.234.4533



GROCERY STORE

Replications Unlimited

www.replicationsunlimited.com



The designer wanted to add reclaimed wood and white brick to contrast and pop against the dark metal of this Kroger's store, but expense, weight and availability were issues. Instead, the architect chose Urestone architectural panels for both the brick and the wood. The panels, from Replications Unlimited, are made from a high density, lightweight foam and then coated with a hardcoat polyurethane layer. Urestone custom prefabricated the 4-foot-wide vertical wood panels and the two wood corners to simplify the on-site installation time and to provide a higher-quality factory detail. It took installers less than four days to complete.

► For more product information from **REPLICATIONS UNLIMITED** circle 248.

LOCATION:

Kroger store, Columbus, Ohio

SIZE:

12,000 sq. ft.

EXTERIOR PANEL:

1,000 sq. ft. of Urestone Reclaimed Wood (color: aged driftwood)

1,800 sq. ft. of Urestone Used Brick (color: white) from Replications Unlimited

INSULATION:

The Urestone panels adds 5-6 R Value

BUILDING SYSTEM:

Metal engineered



- Fast and economical install
- Interlocking 4x8' panels largest in the market
- Attaches to any surface
- Lightweight
- Outstanding color and realistic deep textures
- Completely customizable colors, textures, sizes.
- Extremely Durable
- High R-Value



View more colors and textures online

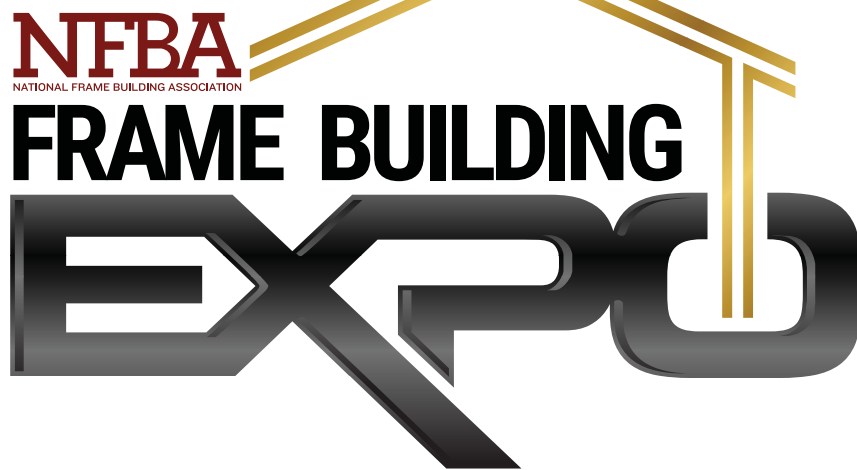
MOST ECONOMICAL WAY TO REMODEL



URESTONEPANELS.COM
ST. LOUIS, MO
P: 314-524-2040



Circle Reader Service #503



NFBA
NATIONAL FRAME BUILDING ASSOCIATION

FRAME BUILDING

EXPO

February 14-16, 2018
Columbus, Ohio
Hilton Columbus Downtown
and Greater Columbus Convention Center

Learn more at nfba.org.

WATER TREATMENT FACILITY

S-5! www.s-5.com

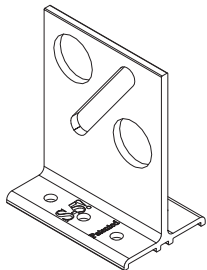
► For more product information from S-5! circle 249.



The new Genesee Water Treatment Facility in Golden, Colorado, is hit with an average of 84 inches of snow annually. To keep employees and the general public safe from falling snow, a snow retention system from S-5! was installed on the metal roof. The “Snow Retention Calculator” on the S-5! website helped determine DualGuard to be the best system for this project. The roof was 11,500 square feet of 16-inch double lock 1-1/2-inch standing seam in medium bronze. Four rows of DualGuard were installed, 600 linear feet in all, easily meeting snow load requirements for the Denver suburb. Most of the roof is a relatively low-slope 3:12 pitch, while a couple segments are 6:12.

NO MESS. NO LEAKS.
VERSATILE.

VERSAGARD®



VersaGuard provides compatibility with most trapezoidal, exposed-fastened profiles with six points of attachment for greater holding strength. S-5!® patented reservoir conceals the sealant from UV exposure, preventing drying and cracks, giving this product an extended roof life.

VersaGuard can be used to support photovoltaic panels or snow retention purposes.

For details and installation instructions, visit www.s-5.com.

www.s-5.com | 888-825-3432 | A2LA Cert No. 0018.04

S-5!
The Right Way!

LOCATION:
Golden, CO

ARCHITECT:
*Eidos Architects,
Greenwood Village, CO*

GENERAL CONTRACTOR:
*RN Civil Construction,
Centennial, CO*

SNOW RETENTION SYSTEM:
*DualGuard from s-5!,
Colorado Springs, CO*

ROOFING, SNOW RETENTION INSTALLER:
*MB Sheet Metal, Commerce
City, Colorado; roofing
coil from Sheffield Metals
formed on site. Flush metal
soffit panels*

Circle Reader Service #450

Dynamic Color



Sharsburg Library, Sharsburg, PA

Architect: Front Studio Architects

General Contractor: Franjo Construction

Distributor: Brock Associates LLC

Profiles: PAC-CLAD 7/8" Corrugated in .032 aluminum

Colors: Silver, Copper Penny, Cardinal Red, Award Blue, Patina Green

Photography: ©2015 Ed Massery

"As soon as we knew we wanted it to be colorful, metal became the obvious choice for the exterior. PAC-CLAD corrugated metal would be the most economical, long-lasting material."

-Art Lubetz, principal, Front Studio Architects

**PAC-CLAD
Corrugated**

45 Colors - 31 ENERGYSTAR®

CASE STUDY



PAC-CLAD.COM | IL: 1 800 PAC CLAD | MD: 1 800 344 1400 | TX: 1 800 441 8661 | GA: 1 800 272 4482 | MN: 1 877 571 2025

Circle Reader Service #485



GARAGE/PERSONAL STORAGE

Becker Specialty Coatings

www.beckers-group.com



The customer's demands were simple and direct: he wanted a great looking building. The objective was achieved with Beckers BeckryTex paint system and Hixwood Metal.

► For more product information from **BECKERS** circle 250.

LOCATION:

Danbury, WI

BUILDING SYSTEM:

Hixwood Metal Inc., Thorp, WI

SIZE:

40' x 60' x 14' with 16' lean-to

CONTRACTOR:

Mast Brothers Construction

METAL PANELS:

Roofing and wainscoting (Beckers SR100 BeckryTech Earth Brown); Exterior wall (Beckers BeckryTex Rust Textured SR100), supplied by Hixwood Metal Inc.

OTHER:

Ventilation (Marco Industries); Cupolas (MWI Components); Doors (C.H.I. Sandstone 5634 overhead door and Plyco Hickory Moss 20 Series service door); Windows (Silverline 2802 Sandstone); Fasteners (East Coast Fasteners)

"Still Making a WORLD OF DIFFERENCE"

- Colors to match any Rollformed Steel
- Hundreds of Closure Styles & Angle Cuts
- Dozens of Sales Professionals
- Factory Delivery Fleet & Fast Delivery
- High Quality Products for any Application



PLY-FAST SEALER



PLY-LO LOW PROFILE FASTENER



PLY-LO FASTENER



METAL FAST SEALER


East Coast
 FASTENERS & CLOSURES, INC.
A Plyco Company. Build Plyco Strong.

800.558.5895 • Fax: 800.257.5926 • www.plyco.com • Elkhart Lake, Wisconsin

Circle Reader Service #498



OFFICE BUILDING

Wick Buildings

www.wickbuildings.com



Located in the heart of Wisconsin vacationland this office building was designed to blend with the local landscape. Built with low-maintenance metal, the thin-cut field stone on the front of the building, cedar-wrapped entryway columns, and shingled roofs on the entry way and walk door foyer further helps to set an earthy tone. The inside does not disappoint, with a cedar ceiling in the entry way and foyer, hickory cabinets and panel pine doors. But rustic also goes modern with carpeted floors and a whole-house sound system.

► For more product information from **WICK BUILDINGS** circle 251.

LOCATION:

Minocqua, WI

ARCHITECT:

*Van Strydonk Construction,
Tomahawk, WI*

SIZE:

*60' x 74' x 10' (inside ceiling height);
6/12 roof pitch*

CONTRACTOR:

Willie Kimmons, Merrill, WI

BUILDING SYSTEM:

Wick Buildings Post Frame

OTHER:

*10' x 9' overhead doors; SFS intec
fasteners; LP Smart Side window trim*

Quality, Value & Service on Every Project

Your customer expects the best from you, and you should expect the same from your building partner.

Choose Wick Buildings to make sure you get all the quality, value and service you and your customers deserve. Join our team!



Learn more at:
WickBuildings.com
800-356-9682



Circle Reader Service #511

from Rural Builder - 2017 SOURCE BOOK

PRIVATE RESIDENCE

Valspar Corporation

www.valsparcoilextrusion.com



The decision to deploy a metal roof on his dwelling was a simple choice for Merle Auker, steel purchaser for A.B. Martin Roofing Supply. Auker implemented the A.B. Martin ABSeam Panel system on the residence. The structure has a clean and uniform exterior, free from visible screws, thanks to the hidden clip system of the standing seam. Pushing the benefits further is the WeatherXL Crinkle Finish coating from Valspar, in a sleek black shade that provides a uniform and regal look to the roof along with a tough, durable finish.

► For more product information from VALSPAR circle 252.



LOCATION:

Newmanstown, PA

ARCHITECT:

Goody's Home Design, Elm, PA

COIL COATING:

WeatherXL Crinkle Finish from Valspar Corporation, Minneapolis

PANEL:

ABSeam Panel system from A.B. Martin Roofing Supply, LLC, Ephrata, PA

Protection Against the Elements

Lite Commercial 5100 & 7100 Steel Walk Doors



9-Lite Crossback

9-Lite

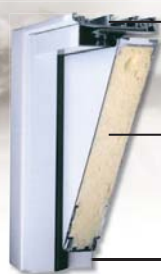


Vue Lite

6-Panel

Vent-Lite

Standard



Full perimeter dual seal bulb and leaf of extruded Santoprene® flexible at -40°F

Polyurethane foam core with R-12 insulating value that is guaranteed not to swell, delaminate or warp

16-gauge painted galvanized steel frame in the 5100 Series



Weather stripped snap-in header parting stop for maximum weatherseal

Commercial 5100 & 7100

Steel walk doors with steel jambs prehung and 4-way universal. A thermal barrier is added to the 7100 Series.



A. J. Manufacturing, Inc.
1217 Oak Street
Bloomer, WI 54724
1-800-328-9448 • 715-568-2204
www.ajdoor.com

Building Ideas



A Rainbow of Custom Colors!

Available

Circle Reader Service #334



White, bronze, brown, and clay are standard, custom colors are available. Contact Customer Service for availability by model and size.



VETERINARY CLINIC

North Star Metals

www.northstarmetals.com



For the past 40 years the Soehrlen Veterinary Clinic has been providing veterinary services to the Navarre, Ohio, area. The opening of a new clinic will allow for even more comprehensive service. The building system features roof and wall panel from North Star Metals' Five Star Panel Series, a 3/4 inch tall, 9 inch on-center, through-fastened panel in classic barn colors. The theme continues inside the building with 1 inch x 8 inch x 12 inch barn siding.

► For more product information from **NORTH STAR METALS** circle 253.



BUILDING LOCATION:

Navarre, Ohio

BUILDING SIZE:

*Greater than 10,000 sq. ft.
(with many extensions)*

ARCHITECT:

Illes Architects

CONTRACTOR:

K & M Builders

WALL AND ROOF PANEL:

*29-gauge Five Star Panel Series from
North Star Metals*

INSULATION:

*R19 fiberglass insulation in
walls and ceiling; single bubble
insulation under 29-gauge
painted steel roof*

VENTILATION:

Vented soffit



EQUIPMENT STORAGE

Schweiss Doors

www.schweisdoors.com



Farmer and trucking company owner Brian Ryberg has a lot of equipment to store. His post-frame storage buildings, all erected by Country Wide Lumber of Hector, Minnesota, were constructed with Schweiss bifold doors. The newest bifold liftstrap/autolatch doors include a 40 x 18 foot door on an 80 x 150 foot cold storage machine shed and a 36 x 18 foot door on a 60 x 135 foot shop with in-floor heating. Two of his older Quonset buildings have 30 x 14 foot and 24 x 14 foot bifold cable doors on them. Well satisfied with the system, he subsequently planned to replace the sliding doors on another building with Schweiss bifolds.

LOCATION:

Buffalo Lake, MN

DOORS:

Bifolds from Schweiss Doors (40' x 18'; 36' x 18'; 30' x 14' and 24' x 14'.)

BUILDING CONTRACTOR:

Country Wide Lumber, Hector, MN

► For more product information from **SCHWEISS DOORS** circle 254.

SCHWEISS THE DOOR LEADER

DOORS

HYDRAULIC - OR - BIFOLD
 ONE-PIECE DOORS STRAP LIFT DOORS

507-426-8273

SCHWEISSDOORS.COM

Circle Reader Service #414



Your guide to post-frame and metal building supplies

From the ground up to the roof, the following product profiles will help you build the best post frame or metal building your customers demand. Use the following index to quickly find what you're looking for.

Adhesives, Sealants, Caulks	27	Fall Protection	37	Metal Roofing Products
Building Packages		Fasteners, Connectors		Cupolas/Retrofit & Recoatings/
Post Frame/Steel Frame)	27	Nails/Screws/Roof Clamps	38	Underlayment/Snow Management....
Building Panels		Foundation Products	44	Moisture/Vapor Barriers.....
Roof & Wall	30	Insulation.....	46	Software
Doors	32	Metal Construction Components		Trusses/Truss Assembly
Door Hardware	35	Coil/Paint Coatings/Metal Forming...	48	Ventilation.....
Equipment	36			Windows/Skylights/Daylighting.....

ADHESIVES, SEALANTS, CAULKS

Aztec Washers | Circle 102

Aztec's tooling capabilities coupled with numerous elastomers, metal, and alloy options enable it to offer customers a variety of choices to fill virtually every need in roof flashings, pipe, sealing washer and plugs. Its Master Flash is a universal flash piping system specially designed to accommodate roof penetrations for everything from pipe, cable, conduit and wire, from 1/4-inch up to 28-1/2 inches in diameter.

Dynamic Fastener | Circle 103



Titebond Weather-Master Metal Roof Sealant is specifically formulated to outperform all other sealant technologies, including silicones, tri-polymers and polyure-

thanes. This superior polymer provides a waterproof seal against water, wind, dust and dirt. It offers exceptional adhesion to

Kynar-coated metal materials, along with standard metal, aluminum, steel galvanized bonderized surfaces, plastics and glass. Titebond is available in more than 50 colors to match today's popular metal roof and metal siding colors.

Novagard Solutions | Circle 104

Novaflex metal roof sealant is one of the premier silicone sealants, with its excellent adhesion to all metal types including Kynar, and its permanent flexibility. Novaflex extrudes down to -20°F and up to 120°F, and is tack free in 10-15 minutes. The seal stays flexible for years with minimal shrinkage, so there is no sagging, slumping or cracking.



Topps Products, Inc. | Circle 105

Topps Polyprene is the high-performance leak repair cement voted #1 by contractors. It is new and improved with special

wet surface adhesives for emergency all-weather repair to metal. Use for general reinforcement and repairs to flashings around equipment. It's excellent for crack repair and in gaps.

BUILDING PACKAGES



Graber Post Buildings | Circle 106

Graber Post Buildings continues to be a phone call away for all post-frame building materials and do-it-yourself packages. GPB manufactures metal panels for any residential, commercial, industrial, agricultural or roofing application. It also produces custom trusses, metal trims, laminated poles and also features a steel coil division.

products

BUILDING PACKAGES (POST FRAME, STEEL FRAME)



Lester Building Systems LLC | Circle 107

Celebrating 70 years in business, Lester Building Systems is a proud supplier of custom engineered post-frame buildings. Lester offers a lifetime structural warranty unmatched by others. Lester Buildings' dealers are empowered with Improv, an exclusive software that promptly designs, engineers, prices and draws buildings. Download specs at ARCAT.com.



Wick Buildings | Circle 108

Wick Buildings is a leader in the post-frame industry. Founded in 1954, with more than 73,000 buildings completed, Wick builds everything from industrial and light manufacturing facilities to bank and aviation buildings, as well as gas stations, churches, equine and livestock facilities.

STEEL-FRAME SYSTEMS

Central Storage Works | Circle 109

Central Storage Works, a division of Central States Manufacturing, specializes in private labeling for its distributor's

self-storage systems. This is self-storage made simple with fast and easy-to-use construction designs, in-house detailing, quick and intuitive quote results, and an experienced team to support both sales and construction questions. With seven manufacturing facilities, you receive quick turn-around while benefiting from lower freight costs.



Erect-A-Tube | Circle 110

Erect-A-Tube designs, engineers and manufactures aircraft T-hangars and



ONE CALL-ONE LOCATION FOR ALL THINGS POST FRAME!

COMMERCIAL



Metal Roofing

Trims

Lumber

Pre-Engineered Trusses

FARM & AG



RESIDENTIAL



Laminated Posts

Insulation

Timely Delivers

All Accessories

EQUINE



Graber Post Buildings, Inc. - 7716 N 900 E Montgomery, IN 47558
Phone: 800:264.5013 - Fax: 812.636.4936 - www.graberpost.com

Circle Reader Service #433



clear-span hangars for the general aviation and business jet markets along with electric bifold doors and bottom rolling doors. Utilizing the structural qualities of HSS tubing, a bridge-truss design was developed, providing minimal deflection, smooth operation of the door system and flexibility in hangar design. With 54 years of manufacturing experience, Erect-A-Tube provides a single-source product line with a fully-integrated system for ease of construction and years of reliable service.



Heritage Building Systems | Circle 111

Heritage Building Systems is a leading full-service manufacturer of custom-designed steel buildings. In the agricultural market, its rigid-frame, all-steel construction is sturdier than traditional buildings, withstands harsh conditions and provides farmers and ranchers with durable buildings to protect their farm equipment and livestock. With 40,000 building solutions across the United States and 15 other countries Heritage assures that a team of project consultants and customer service representatives is with you from start to finish.

Star Building Systems | Circle 112

Star Building Systems is a leading manufacturer of custom designed metal building systems for commercial, industrial, institutional and agricultural use. Star also leads the field in technological advances and ideas to provide customers with an efficient, cost saving product. Star Building Systems has more than 1,100 authorized Star Builders and a reputation for quality in products, construction and relationships.

Sukup Steel Buildings | Circle 113

Sukup Manufacturing Co.'s pre-engineered steel buildings feature clear-span construction and standing seam or screw-down roofs. The clear-span design allows for flexibility in customizing interior space to meet customer needs. Purlins



INNOVATION and GROWTH



At Morton, we're dedicated to elevating the perception of our industry. We believe that post-frame construction is one of the most durable, versatile, and cost-effective solutions available. We continuously work to improve the way we're viewed through innovation and expansion into new market segments to continue our growth.

Our latest innovation, the Morton Foundation System[®], demonstrates our commitment to advancement. This system utilizes concrete lower columns and removes wood from the ground while improving on the strength and durability of the structure. By offering this as standard on all Morton buildings, we have eliminated one of the common concerns customers have regarding the integrity of post-frame construction.

We are dedicated to ongoing innovation and growth to expand the opportunity for all.

If you would like to join our team of employee-owners who are focused on innovation, growth, and opportunity, visit mortonbuildings.com.



800-447-7436 • mortonbuildings.com

©2017 Morton Buildings, Inc. A listing of GC licenses available at mortonbuildings.com/licenses. Ref Code 284

and girts are galvanized for long-life and pre-punched to ensure proper fit and faster installation. A variety of sidewall and trim colors and options are available.



Varco Pruden Buildings | Circle 114

Varco Pruden Buildings, a division of Blue-Scope Buildings North America Inc., is an industry-leading provider of innovative steel building solutions. Through advanced engineering and a network of 1,000 authorized builders throughout North America, Varco Pruden offers framing, roof and wall systems for low-rise commercial and industrial projects. Varco Pruden combines high-quality materials with virtually any exterior finish to create buildings that are energy efficient, aesthetically appealing and provide years of low-maintenance performance.



Web Steel Buildings Northwest, LLC | Circle 115

Strategically located to serve all western states, including Alaska and Hawaii, Web Steel Buildings Northwest is a regional pre-engineered metal building manufacturer committed to delivering a quality product to each and every customer. WSBNW offers packages from truss-only to complete building kits featuring four different truss styles for the simple or complex projects, including all-steel rigid frame systems and the open-web system utilizing wood girts and purlins.

BUILDING PANELS

ROOF & WALL PANEL



A. B. Martin Roofing | Circle 116

The ABSeam panel is the ultimate choice for a long-lasting standing seam metal roof, with heavy-duty 24 gauge steel in more than 16 energy-efficient colors. For more than 50 years, panels using Valspar's Fluoropon coatings (70 percent Kynar 500/Hylar 5000 PVDF resins) with their extraordinary capability to retain color and gloss, have kept coated metal panels looking vibrant and appealing for decades. In wall panel, A.B. Martin offers the ABM panel in heavy-duty 28 gauge steel in more than 30 energy-efficient colors. They are heat-formed and rolled to custom lengths in hours—not days. It's available in both AZ-50 Galvalume and G-100 galvanized coatings with 36 inch wide coverage. Both the ABM wall panel, and the ABSeam roofing panel, come with 40 year paint warranties and are excellent for residential, commercial, and agricultural applications.

American Building Components | Circle 117

ABC offers a variety of metal roofing panels and accessories backed by industry-leading warranties to ensure successful projects that stand the test of time. Its commitment to exceeding customer expectations and creating lasting partnerships is demonstrated through delivery of innovative service, technology and products, including ABC's new complete, steel building kits and roll-up doors.

BORAL | Circle 118

Boral Versetta Stone is a mortarless, cement-based manufactured stone veneer with a unique, panelized design that is installed with mechanical fasteners, allowing carpenters and contractors to recreate the beauty and craftsmanship of authentic stone masonry using screws or nails. Mortarless panels are designed for a quick and easy installation. Each panel covers 2 square feet and features an integrated moisture management system.



Central States Manufacturing | Circle 119

Central States Manufacturing Inc. produces high-quality metal roofing and building components for more than 5,000 post frame, commercial, residential and architectural customers in the United States and is renowned for service and accuracy.



Classic Metal Roofing | Circle 120

Rustic Shingle is an aluminum roofing system which protects from rain, snow, hail, and winds up to 120 mph with a four-way interlocking design. With its realistic and classic design, and advanced finish, Rustic Shingle adds beauty and value for a lifetime. Reflective pigments in the finish combine with the product's integral airspace and thermal break to maximize building energy performance.

(Photo credit: Schroer & Sons, Sidney, Ohio).

EDCO Products | Circle 121

EDCO Products' Infiniti roofing line represents several technology breakthroughs. This includes enhanced "Cool Roof" eco-performance; "Whisper Quiet" technology to mute outside noise; and permanent, thermal-fused textures for fade-free curb appeal. Infiniti also features proprietary four-way lock technology for exceptional wind resistance (up to 160 mph).



Everlast Roofing | Circle 122

Everlast Roofing's metal and siding products are uniquely made with a one-of-a-kind heat forming process that prevents

microscopic paint cracks. This enables the use of harder, more scratch-resistant paints. Offering a variety of gauges, colors and custom trims to suit every customer's application makes Everlast Roofing the perfect choice for the agricultural, commercial and residential markets.



Fabral | Circle 123

Fabral's product offering includes a wide selection of vertical panels for both standing seam and exposed-fastener roofing applications. Some of its many products include: Grandrib 3, the original 9-inch-on-center profile and one of the most versatile steel panels on the mar-

ket; and 1-1/2 inch SSR, a 24-gauge classic design featuring beauty and durability. Fabral offers industry-leading warranties and an unbeatable paint system—Enduracote—that takes performance to the next level.



Lester Building Systems LLC | Circle 124

The patented Eclipse Roof is a sleek metal roof system with leak-free performance. The 36-inch wide Eclipse panel installs quicker than the typical standing seam panel, requiring one-third to one-half the number of panels and fewer

HERITAGE
BUILDING SYSTEMS®
Established 1979

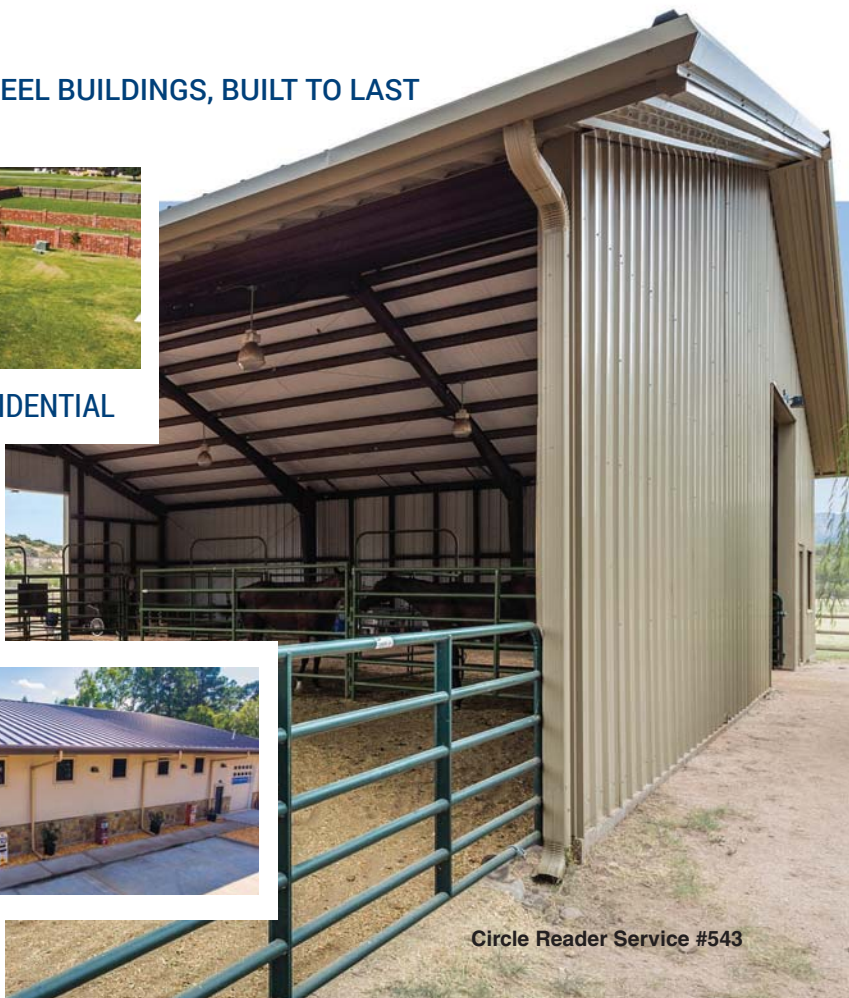
STEEL BUILDINGS, BUILT TO LAST



AGRICULTURAL : COMMERCIAL : EQUINE : RESIDENTIAL

Partner with Heritage for your custom metal building, whether for **livestock, machinery, garage or shop**, or if you're in need of a commercial building.

Call today for a free quote on your building project.



products

BUILDING PANELS (ROOF, WALL & INTERIOR); DOORS

screws than the typical standing seam roof panel. Importantly, the 26 gauge Eclipse panel can be installed over open purlins; no roof deck is required.



McElroy Metal | Circle 125

Designed for post-frame and residential applications, the Mesa panel is a patent- and copyright-protected panel with a nearly invisible lap. The Mesa panel is sure to add beauty to any project, measuring 36 inches wide with ribs 3/4-inch high. McElroy Metal, a leading supplier of metal wall and roofing products to the post-frame industry, is a participating supporter of the National Frame Building Association, and a 35-time winner of the *Rural Builder* Gold Key of Excellence, as selected by readers.



Metal Panels Inc. | Circle 126

Metal Panels Inc offers more than 15 profiles of quality metal roof and wall panels, all available in durable finishes and energy-saving cool colors. MPI panels are produced with one of the quickest turnaround times in the industry. Exposed and hidden fastener panels, custom trim, accessories and flat sheets are available. MPI serves a seven state area in the Midwest through manufacturing centers in Oklahoma and Kansas.



North Star Metals | Circle 127

North Star utilizes state-of-the-art roll forming and folding equipment to produce consistently top-quality panels and trims exactly to order. A large selection of roll-formed panel and trim is available and CNC folding capabilities allow North Star to satisfy any custom-panel or trim requirements, including matching discontinued and hard-to-find panels. North Star also offers on-site delivery with crane-equipped tractor-trailer units and roll-off-capable gooseneck trailers.

Petersen Aluminum | Circle 128

Petersen's PAC-CLAD metal roof panels are corrective-leveled for superior flatness. Multiple seam heights offer a variety of aesthetics. Panels provide structural performance including mechanically-seamed panels that provide superior wind and uplift resistance. Pac-Clad panels feature a 70 percent PVDF finish, covered by a non-prorated 30-year warranty, available in 45 colors on steel and aluminum. Petersen's Pac-Clad metal wall panels offer design flexibility by combining bold visual effects with easy, cost-effective installation. Profiles are available in a variety of rib patterns, as well as corrugated and composite systems, with hidden or exposed fasteners. Wall panels also can be installed vertically for design creativity.

Replications Unlimited | Circle 129

Replications Unlimited provides stone, wood and brick architectural panels pre-engineered for the post-frame building industry. The URESTONE Professional Faux Stone series is the latest technology in interlocking stone/brick panels. Panels



are realistic, extremely durable and lightweight. They allow quick and easy installation at a portion of the cost of other systems. The Urestone system is available in large 4 x 8 panels, a unique wainscot series (typically a 42-inch-high panel capped with a built-in top ledge), column kits, pilasters and many trim elements.

INTERIOR WALL PANEL



Extrutech Plastics | Circle 130

The Extrutech Plastics' "stay-in-place" concrete form for poured walls is pre-cut to project specifications and snaps together with a double-spline E-locking system. The Extrutech FORM offers an easy-to-clean sanitary surface on both sides. The product creates a structural wall system that is builder- and customer-friendly for use in dairy, car washes or food facilities. Initially designed for 6-inch poured walls, it is also now available for 8-inch walls.

DOORS

A.J. Manufacturing | Circle 131

A.J. Manufacturing builds high quality steel walk doors with flush, 6-panel, crossback, 2-panel and textured skin panels along with several lite options. AJ



doors are built with G60 galvanized steel, pre-hung in steel or aluminum frames with 4 inch x 4.5 inch fixed pin or ball bearing hinges. The 1-3/4 inch doors are polyurethane foam

injected for an R12 insulating value. AJ doors have been independently tested and meet Florida coastal and Texas wind load requirements.

CannonBall:HNP | Circle 132

CannonBall entry doors set the standard for quality, variety, functionality and installation ease. Steel entry doors, like popular 1900-Series provide high aesthetics and commercial-grade longevity, while ag builders choose the updated

1700-Series for classic styling, design efficiency and budget pricing. Specialty features and a wide range of accessories are found in the 1800 and 2000 Series models. Additional door varieties like sliding barn doors, Dutch doors, bale/loft doors and roll-up doors are also available, complete with optional hardware and accessories.



Delden Garage Doors | Circle 133

Delden wholesales garage doors, operators, parts and accessories for residen-

tial, commercial, industrial and agricultural projects. Doors are made with high quality components in all doors. Delden also is a distributor of multiple brands. Custom doors are made in-house.

Entrematic/Amarr | Circle 134

Established in 1951, Amarr is one of the world's leading brands in design, manufacturing and distribution of sectional doors for residential and commercial applications. Made in the USA, Amarr products have a legacy of innovation and high quality design. Amarr is part of Entrematic, a company comprised of well-established entrance automation brands with nearly 200 years of cumulative experience, Entrematic provides the most complete ranges of entrance automation products and warehouse solutions.



BUILT FOR POST FRAME

THE INDUSTRY'S LEADING MANUFACTURER OF SLIDING DOOR TRACK AND HARDWARE



THE SABRE LATCH™

Offering Security For Your Sliding Doors

- Exterior Lockable Polished Stainless Steel Handle
- Zinc plated Center Case with Inside Handle
- Quick Mount Bracket design installs within minutes to MWI 3300 & 4400 Series Vertical Rail
- Interior Latch functions even when the Exterior Handle is locked
- BC87 Center Door Guide acts as receiver for Sabre Latch™ and provides drive over protection

The Sabre Slim®

- Offers the security of the Sabre Latch™, but utilizes standard 1.5" Quick Frame
- Installs within minutes to MWI 2200 Series Vertical Rail



1015 32nd Ave West • Spencer, Iowa 51301
 ph: 800-360-6467 • FAX: 800-361-3452
 www.mwicomponents.com





Erect-A-Tube Inc. | Circle 135

Erect-A-Tube Inc. designs, engineers and manufactures electric bifold doors, bottom rolling doors, aircraft T-hangars and clear span hangars for the general aviation and business jet markets. Utilizing the structural qualities of HSS tubing, a bridge-truss design was developed, providing minimal deflection, smooth operation of the door system and flexibility in hangar design. With 54 years of manufacturing experience, Erect-A-Tube's single-source product line with a fully integrated system, results in ease of construction and years of reliable service.

Hi-Fold Door Corporation | Circle 136

Hi-Fold, with more than 35 years of manufacturing experience, offers high-clearance bifold and single-panel hydraulic doors. There is a three-year warranty on all doors and a life-time warranty on the lifting cables. All doors are manufactured custom to size and specifications.

Janus International Group | Circle 137

Janus International is the leading manufacturer of roll-up doors for the commercial and self-storage markets. Headquartered in Temple, Georgia, Janus has four domestic manufacturing facilities and two distribution centers stretching coast to coast, plus two international facilities. Ease of use, quick delivery, unparalleled warranty and strong customer support has made Janus a favorite with door dealers nationwide since 2002.

Midland Door Solutions | Circle 138

Midland Door Solutions is the unparalleled leader in the design, manufacturing and installation of custom bifold and

hydraulic doors. Since 1995 Midland has been providing solutions to customers' big door needs. It guarantees the best customer service and lowest total cost of ownership within the industry.



MWI Components | Circle 139

MWI Components is an industry-leading manufacturer of Dutch doors, bale doors and sliding doors. Powder-coated parts are offered in more than 28 colors and more than 100 options for 29-gauge inserts. Track packages are available to finish slider installation or you can choose your own components from MWI's track and hardware catalog. Add the final touch using MWI's expansive line of Arcadian doors.

Plyco Corporation | Circle 140

If you're looking for a commercial, residential or agricultural door, Plyco has the right door for your construction projects. Contractors rely on Plyco for a comprehensive line of durable walk doors that meet today's building codes. Plyco offers pre-hung service doors individually packaged, pre-drilled for lockset, and insulated with injected polyurethane foam. Plyco's extensive line of walk doors include factory-installed window lites, locksets, panic bars, pulls, plates and other accessories to fit your project needs. Plyco walk doors are perfect for



post frame, metal frame and commercial buildings. In addition to walk doors, Plyco's EQUUS Dutch Door System is built tough to last and is ideal for use as an exterior or interior door for tack rooms and offices. The Champion slide door is designed to match the EQUUS Dutch door in appearance to give your building project that professional touch.

PowerLift Hydraulic Doors | Circle 141

PowerLift Hydraulic Doors is North America's largest hydraulic door supplier. It has been designing, manufacturing and installing every door to the exact project requirements for more than 20 years. PowerLift has supplied thousands of doors for the agricultural, aviation, commercial and residential markets. PowerLift Doors are renown for their safety, strength, operating speed, energy efficiency and reliability. Engineered for strength and completely welded together in a single panel requiring no bolting, PowerLift provides the industry's only lifetime structural warranty.



Safe-Way Garage Doors | Circle 142

Safe-Way Door is a leading manufacturer of quality residential, commercial, and industrial overhead garage doors in steel, wood and aluminum. Headquartered in Warsaw, Indiana, Safe-Way Door also operates facilities in Tennessee and Missouri with distribution throughout North America and Canada. Doors are available in multiple configurations including polyurethane and polystyrene insulated, un-insulated and up to nine colors in steel and multiple powder-coat colors in aluminum. Commercial door sizes are available in all of the panel designs.



Schweiss Doors | Circle 143

Schweiss Doors has been a leading manufacturer of hydraulic one-piece doors and patented lift strap/auto-latch bifold doors for more than 35 years. Renowned for quality craftsmanship, Schweiss' custom-made engineered doors are specially designed for many applications including commercial, industrial, agricultural, residential, hangars and designer doors. Ask about the lift strap conversion kit for outdated cable-lift doors and new automatic latch system.

Silvercraft | Circle 144

Silvercraft is the home of pre-assembled aluminum Dutch and sliding doors. These premium doors are available for any equine facility or hobby building. Silvercraft also manufactures bifold doors, walk doors and other products for the poultry and agriculture building industry.

DOOR HARDWARE

CannonBall:HNP | Circle 145

For more than a century, builders have relied on CannonBall, the original producer of round track and trolley sliding door systems. High quality Delrin wheel components, sturdy steel construction, the industry's widest selection of accessories and specialty hardware connect with a century of engineering know-how

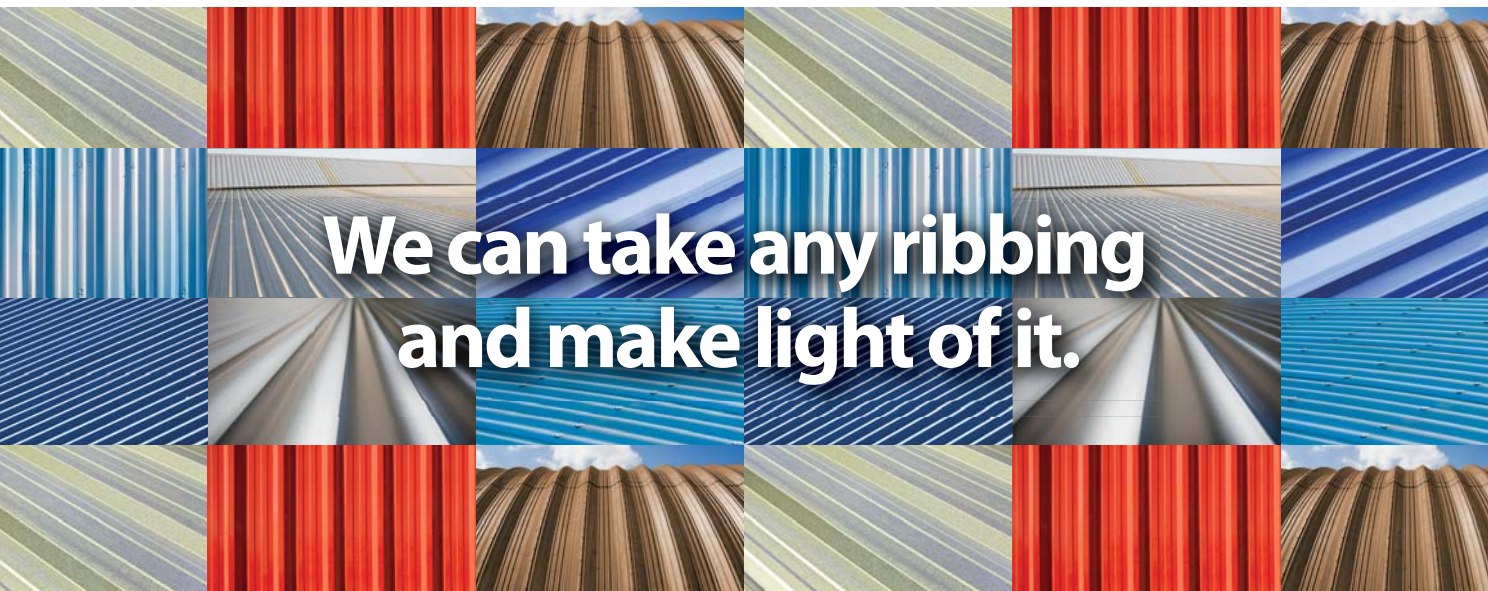
to provide dependable design and long lasting performance. Kwik Frame and Bigg Frame sliding door systems also remove the guesswork and labor associated with field-fabricated models through easy standard assemblies.

National Hardware | Circle 146

National Hardware's interior sliding door hardware can transform any opening or doorway. The unique, innovative design saves space and creates a decorative enclosure for any room. Interior sliding door hardware kits are ideal for creating a versatile sliding door system that only takes up a few inches of floor space.

Western Products | Circle 147

Whether you use box track or round track, you'll find the strength, shape and size you desire in door tracks, hangers, trolleys,



We can take any ribbing and make light of it.

Match virtually any custom profile with SunSky in days.

Get the leading corrugated polycarbonate delivered fast to fit most any metal profile with SunSky® MetalMatch™ technology. So you can add value and more daylight to projects in as little as two weeks. And MetalMatch is available at an extremely attractive price.



More daylighting options. More easily.

SunSky's first-in-class durability, high performance and superior light transmission are ideal for roof, side and skylight applications. So you can expand unique design possibilities, reduce energy costs, and enhance environments with more natural light. Available in several opacities,



including Soft White, SunSky is backed by a 10-year warranty. To learn more, contact your local distributor or call 800-999-9459. Or visit us at www.PalramAmericas.com/MyProfile. We'll take the perfect ribbing and make it even better.



Circle Reader Service #350

brackets, sliding door accessories, door-frames and more from Western Products. Choose from Western's box track options of 400- to 1,000-pound capacity, or its round track at 600-pound capacity. Most track orders are shipped from inventory within three to five business days.

EQUIPMENT

Acu-Form | Circle 148

Acu-Form 12,000# Heavy Duty Coil Upender features a soft stop-and-start for a safer and easier way to tip your coils. Riding on four track rollers rated at 10,000 pounds each, gives it a smooth, even ride every time. Using a coil upender saves you from having wasted materials with bent coil edges. It also promotes profit by less handling time. Machines are available in electric, hydraulic or mechanical form.



ASC Machine Tools Inc. | Circle 149

With more than 65 years of experience ASC has developed a reputation for innovation, quality and responsiveness in the design of rollforming machinery. ASC manufactures the industry's most innovative rollforming equipment to produce roof and wall panels, trim profiles, C/Z purlins, grain bin components, decking and much more.



The Bradbury Company | Circle 150

The Bradbury Co. Inc. manufactures a wide range of equipment for the metal building, roofing, and post-frame industries includ-

ing in-plant and portable roll formers, integrated felt wicking applicators, trim folders, CTL/slitter lines, fully automated trim lines, and related coil-processing equipment. All Bradbury machines are engineered for easy operation and durability.



Hayes International | Circle 151

The Challenger Series, manufactured by Hayes International, is a rollforming production line that is built for lasting performance and ease of operation. These lines are equipped with a Beck Automation SII control system that is capable of office-to-shop download. Speed packages are available up to 200 FPM with sheet accuracy of plus or minus 1/16 inch (1.5mm).



Hershey's the Metal Meister | Circle 152

Hershey's the Metal Meister LLC is a family-owned and operated company based in the prairies of central Illinois. Hershey's owns the North American patent rights to build the world's leading long folding machines: the Variobend USA. Between Hershey's and its sister company, ASCO GmbH from Germany, there are now more Variobend long folders manufactured worldwide per year than any other brand.

Marion Manufacturing | Circle 153

Marion Manufacturing adds the value to the metal by designing, fabricating and installing custom manufacturing and pro-



duction machinery. Marion specializes in metal-forming equipment such as roll formers, uncoilers, shears, stackers, etc. Marion Manufacturing also offers a full-service machine shop and re-tooling and service on other brands of equipment.



Metal Rollforming Systems | Circle 154

Metal Rollforming Systems designs and manufactures industry-leading roll forming equipment and accessories. MRS' product lines consist of single- and double-deck roll formers, single- and multi-trim roll formers, slitters and more. MRS takes great pride in customer support both before and after the sale.

Roll Former Corporation | Circle 155

Roll Former Corporation now offers the Ag Panel Perforator for ventilation needed on your 3/4-inch x 5 rib wide ag panels. It comes complete with four sets of perf dies for this 38 inch wide popular panel.



It can also perforate "flat stock" so you can post-process the rest of your ventilated trim products, 26- to 29-gauge ag panels or 24 gauge max flat stock.

Rustgo USA | Circle 156

Rustgo USA manufactures Rustgo All-Terrain Mobile Work Platforms, truly 100 percent American made. Rustgo is the economical way to increase profit margins, increase production and be OSHA Compliant on job sites.



Semmler Systems | Circle 157

Semmler's Big Red 111 for fabricating wood laminating columns features

a design that contains 10,000 nails in one loading. Special design of in-line equipment best saves plant layout space and requires only one operator for the total system. Total system equipment includes the Big Red fabricator, conveyor system, gusset press, planer with chip collector, bunk-stacking cart with flanged wheels and track. Also available is the finger-joint system that features unique finger-joint detail. It's available with jib crane, with vacuum lift and scissor lift.

FALL PROTECTION

Fall Protection Distributors LLC | Circle 158

The Standing Seam Roof Anchor provides a 5,000 pounds anchor point for



roofers, solar installers, and anyone working on standing seam roof systems. It requires only a two-minute installation and only weighs 4.5 pounds. This device fits 95 percent of today's seam profiles. The one-piece body is extruded 6061-T6 aluminum with 12 stainless steel set screws. It can be used as a single user anchor or for attaching adapter plates for walkboards and cable retractors. It can also be used for anchoring horizontal lifelines to standing seam roofs.



**From a simple beam to a complex truss system,
Glu-Lam Timbers
support your plan.**

**701 E. Linden Street, Richland PA 17087
717.866.6581
1283 Joni Miller Road, Oakland MD 21550
301.334.3977
www.rigidply.com**

FASTENERS/CONNECTORS

NAILS, SCREWS

Atlas Bolt & Screw | Circle 159

Atlas Bolt & Screw metal and wood fastener selections include #10 WoodTite,

#14 WoodTite, #12 Ultimate, #10 Ultimate, Endurafast, Low Pro and #12 WoodFast, 304 and 410 Stainless, FlatTop and Ultra-Z fasteners. Headquarters and manufacturing is located in Ashland, Ohio with secondary manufacturing and fully-staffed service facilities strategically located in


Ashland, Ohio, Houston, Texas, Salem, Oregon and Flat Rock, North Carolina.

DB Building Fasteners, Inc. | Circle 160

DB specializes in domestic and imported self-drilling fasteners and sheet-to-wood fasteners for the metal building and metal roofing industries. Two in-house paint booths can custom paint any color, including metallics. DB also manufactures closure on two in-house closure presses and can handle special needs.

Direct Metals Inc. | Circle 161

DMI is a fastener manufacturer and master distributor of a wide range of building fasteners engineered for the metal roofing and post-frame building markets. DMI has a full line of post-frame fasteners, panel clips, clip fasteners, pipe flashings, ventilation and a full line of metal roofing accessories.



WINDOW WRAP®
SELF-ADHERING WATERPROOFING MEMBRANE

Self-Adhering Weather Barriers for Windows and Doors

- **Eliminate Leaks**
- **Easy to Apply**
- **Seal Out Moisture**
- **Extended Warranties**
- **Self-Sealing**
- **Save Time and Money!**

A Family of Professional Solutions!

WindowWrap® PSX-20

- Patented Design
- Aluminized Polymer Surface
- Resists UV Degradation for 180 Days

WindowWrap® PowerBond™

- Aggressive Patented PowerBond Adhesive
- Aluminized Polymer Surface
- Adheres in Cold Temperatures to 25°F

WindowWrap® Flex

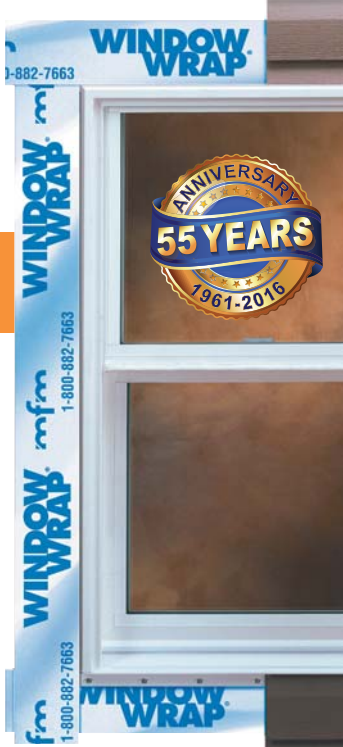
- Designed for Curved Surfaces
- Polyethylene Crepe Film
- Excellent Flexibility

WindowWrap® Flex PowerBond™


- Aggressive Patented PowerBond Adhesive
- Polyethylene Crepe Film
- Adheres in Cold Temperatures to 25°F

WindowWrap® White


- Multi-Purpose Tape
- White Polymer Film




All WindowWrap® products are self-adhering and self-sealing around nails, screws and staples.



WindowWrap® PSX-20, WindowWrap® PowerBond™ and WindowWrap® White comply with AAMA 711-07 standards and ICC-ES AC148, Report ICC-ES ESR-2783.



Patent Nos. 6,479,119 / 6,627,017 / 8,603,629



525 Orange St. • Coshocton, OH 43812
800-882-7663 • www.mfmbp.com



Getting you up to speed.





RoofLoc®
for high-speed metal roof installation

BECK Fastener Group®, FASCO America®, SCRAIL® and RoofLoc® are registered trademarks of the BECK Fastener Group.

Master Distributor **FASCO America®** www.fascoamerica.com

Circle Reader Service #359

Circle Reader Service #412

Dynamic Fastener | Circle 162

Dynamic offers D.F. brand self-drilling screws for stitching and sheet-to-structural applications; pole barn fasteners for attaching up to 18 gauge sheet metal to wood; and clip screws when a low clearance head is required for fastening to steel or wood. Fasteners are available in stainless steel and with the Dyna-Coat 1,000 hour salt spray premium coating.



East Coast Fasteners | Circle 163

East Coast Fasteners produces durable, long-lasting fasteners for all combinations of building materials. For fastening wood, aluminum, steel or any variety of applications, East Coast's fastener line is manufactured to superior quality standards to guarantee optimal performance. With a variety of coatings to assure the builder has the best product on the market and the fastest cutting tips, East Coast fasteners are manufactured to standards that assure fast and reliable installation every time. East Coast Fasteners provides the strongest and most effective fasteners for your construction needs. For assistance in finding the best fastener, contact a Plyco/East Coast Fasteners building component professional.

FASCO America | Circle 164

To conquer your *big* timber framing jobs, FASCO America offers a full range of Jumbo Nails and two well-designed tool models. Both the F91 A RHN20-130 and F91AC RHN20-160 tools have

a side handle for extra support while driving the Jumbo Nails. Jumbo Nails are available in 4-inch to 6-3/8 inch lengths and can be ordered in many different finishes, shank deformations, points and collations to meet your exact needs.

Fasteners Direct LLC | Circle 165

Fasteners Direct LLC is a manufacturer of screws and a distributor of accessories for metal companies. The company's manufactured parts are distinguished for their unequalled resistance to corrosion, for the anti-



Your Total Source for Fastening and Sealing Systems



www.stfasteningsystems.com
Call Today! 800.352.4864
 for our new catalog or download at

©2017 Hargis Industries Inc. dba ST Fastening Systems. All rights reserved. Steelbinder, Woodbinder, Maxx Self Drill, ST, Kwik-Seal and Duraseal are registered trademarks of Hargis Industries Inc. dba ST Fastening Systems. Eniseal is a registered trademark of Eniseal Joint Systems LTD. Novaflex is a registered trademark of Foam Seal, Inc. Tacky Tape is a registered trademark of Illinois Tool Works, Inc.

25 Celebrating years manufacturing great fastening systems

products

FASTENERS, CONNECTORS (NAILS & SCREWS)

back-out feature of Sureloc metal-to-wood screw, and for the Torpedo point on metal-to-metal screws. The Torpedo point delivers fast installation rates for self-drilling screws.

Lakeside Construction Fasteners | Circle 166

Lakeside Construction Fasteners, a full service manufacturing and distribution company offers vast fastener solutions for the standing seam metal

PANEL-TITE® METAL-TO-WOOD SCREWS

The choice is yours!

Designed for fast installation and corrosion resistant performance.

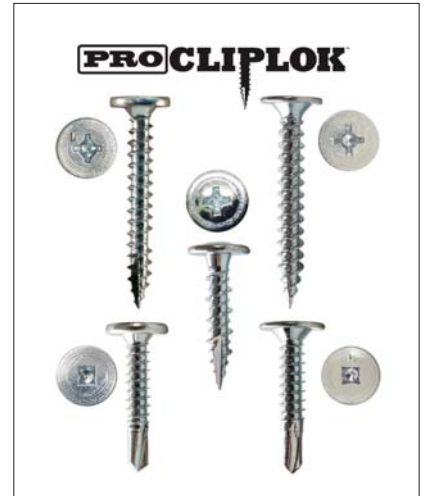
- Available in #9, #10, #12, or #14 Diameter.
- Carbon Steel, Stainless Steel, or Stainless Steel Cap Heads.
- All fasteners can be painted with our Kalida Kote™ paint finish to your exact color match.
- Available with TRI-SEAL® coating formulated for treated lumber applications.

CALL NOW!



TRIANGLE FASTENER CORPORATION
www.trianglefastener.com | 800.486.1832

Circle Reader Service #425



roof industry. The Pro ClipLock fastener line is available in a pancake, wafer, or button-head design. The #10 by 1 inch to 2 inches is specifically designed for decking substrate materials including hardwoods with standing seam clips in mind. The Pro ClipLock family is available in self-drillers or self-tappers and offered with #2 square drive; #2 square combo drive; and #2 Phillips internal drive systems. It can be bagged in 100 or 250 piece bags. Drivers are included in each fastener carton.

Leland Industries | Circle 167

Leland Industries offers the longest line of innovative post-frame fasteners in the industry, from #10- #14 diameter, in lengths to 8 inches, with high-hex or pancake heads. All are available powder coated in more than 100 colors to match panels. Powder-coated Master Grippers are warranted for the life of your panels. For heavy-gauge panels, Mini Drill Points are capable of handling up to 16 gauge total thickness. To complete the package, One-Steppers 12-11 diameter, drill an expansion hole allowing fiberglass or PVC panels to “float”, preventing cracking caused by expansion and contraction.

products

FASTENERS (NAILS & SCREWS)

Levi's Building Components I

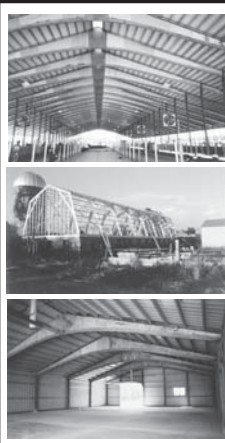
Circle 168

Levi's ProZ SD ensures a weather-tight seal for metal-to-metal installations and is compatible with all metal finishes. The design of the ProZ SD washer head reduces over-driving, and the zinc aluminum alloy cap will never red rust. It features a 25-year warranty and is available in self-drilling #3, #5 and stitch drill points. Also from Levi's is Zinc Plated Low Profile Pancake Head Screws. This ultra-thin fastener is designed to fasten flush and lay flat without dimpling or showing through the panel. Zinc Plated fastens metal to wood. It comes with a #2 square-head style, low profile with SP drill point and is available in three #10 sizes: 1, 1-1/2 and 2 inches.



Maze Nails | Circle 169

Maze Nails is the exclusive manufacturer of StormGuard double hot-dipped galvanized nails with a lifetime warranty against rust. All Maze StormGuard double hot dipped galvanized meet and exceed the ASTM A-153 specification. In business since 1848, Maze offers a full line of specialty nails in bulk for hand driving and in collated sticks and coils for popular pneumatic nailers. Maze has been serving the post-frame industry for many years, providing painted rubber washer nails for corrugated roofing and siding. Maze post-frame nails meet the all important ASTM F 1667 specification. In addition, Maze manufactures nails for fiber cement siding products, cedar and redwood sidings, fencing, decking and roofing. Customers have come to identify Maze Nails with top-quality products, excellent customer service and quick dependable shipments. And Maze Nails are proudly made in the USA in Peru, Illinois.



LAM-PLY TRUSS

The Truss That Will Carry The Load

- Spans up to 72 ft.
- Spacings up to 12 ft. on center, depending on the load you desire
- Bird Nesting Control
- Better Ventilation & Visibility
- No Feed Alley Post Obstruction
- Additional Ceiling Height

Starwood Rafter Uses

- Pole Sheds
- Free Stalls
- Pavilion Shelters
- Machinery Storage
- Riding Arenas
- Solar Barns



Starwood Rafters, Inc.
W24141 Starwood Lane
Independence, WI 54747
(715) 985-3117 • 888-525-5878

www.starwoodrafters.com

Circle Reader Service #375

BUILDING SOLUTIONS... For builders and contractors

Our interest is always your best interest. We provide decades of experience and expertise. We also take pride in our loyalty. You can depend on us to work for you. Because we're not just reliable, we're dedicated. And we don't compete against our builder partners. Varco Pruden offers superior products and service, including:

- Custom engineered and conventional steel designs
- Regional manufacturing proximity
- Cutting-edge technology and innovation
- Unequaled marketing tools and resources
- Experienced project management and field support



Let Varco Pruden show you how, together, we can add value to your business and your reputation with the latest in construction technology.



VP BUILDING SOLUTIONS
...one relationship at a time

Visit www.VP.com/ad/RB to get this free brochure "Building Success Through Commitment."

Looking for more information from companies featured in this issue?

Use the Reader Service card facing this page to get **FREE** information from our advertisers!

Free online info at www.bit.ly/info-rbfn

ADVERTISERS

RS #	Company	Page #	RS #	Company	Page #	RS #	Company	Page #
334	A J Manufacturing, Inc.	24	433	Graber Post Buildings	28	450	S-5!	20
291	AB Martin	45	543	Heritage Building Systems	31	429	ST Fastening Systems	39,57
421	Ace Clamp	47	392	Levi's Building Components	14	414	Schweiss Doors	26,56
459	AkzoNobel	11	412	MFM Building Products Corp.	38		Semmler Systems, Inc.	56
321	Amerilux International, LLC	45	339	Morton Buildings, Inc.	29	567	Silvercraft, LLC	57
303	Applicad-USA, Inc.	57	308	MWI Components	33,57	375	Starwood Rafters, Inc.	41
328	Atlas Bolt & Screw	57		Marion Manufacturing	56	462	Steel Dynamics, Inc.	60
	Bradbury Group, The	56	306	Maze Nails Company	13	345	Sukup Manufacturing	2
	Clark Industries	56	584	Metal Rollforming Systems	47	411	Thermal Building Concepts	57
581	DuraCoat	15	378	National Frame Building Assn.	19,51	425	Triangle Fastener Corp.	40
316	Dynamic Fastener	59		Paint Valley Parts, LTD	56	468	VAP Construction	57
498	East Coast Fasteners	22	350	Palram Americas	35	301	VP Buildings, Inc.	41
407	Everlast Roofing, Inc.	5	485	Petersen Aluminum Corp.	21	464	Ventco, Inc.	17
	Extrutech Plastics	56	313	Plyco Corporation	7	374	Western Products of Indiana	49
393	Fabral	8,9	503	Replications Unlimited	18	511	Wick Buildings	23
359	Fasco America	38	382	Rigidply Rafters	37			

The index is provided as a reader service. Occasional last-minute changes may result in ads or editorial copy appearing on pages other than those listed here. The publisher assumes no liability for omission or errors.

STORY RESOURCES

A listing of the products and services available from companies featured in this issue. To receive more info from these companies, circle the corresponding RS# (reader service number) on the card facing this page. **For even faster service, fax your completed card to 888-847-6035.**

RS #	Company	Page #	RS #	Company	Page #	RS #	Company	Page #
FEATURES			BUILDING PACKAGES			121	EDCO Products	31
241	McElroy Metal	4	POST-FRAME SYSTEMS			122	Everlast Roofing	31
242	Graber Post	6	106	Graber Post Buildings	27	123	Fabral	31
243	Astro Buildings	8	107	Lester Building Systems LLC	28	124	Lester Building Systems LLC	31
244	Varco Pruden	10	108	Wick Buildings	28	125	McElroy Metal	32
245	Morton Buildings	12	METAL-FRAME SYSTEMS			126	Metal Panels Inc.	32
246	Levi's Building Components	14	109	Central Storage Works	28	127	North Star Metals	32
247	Sukup Steel Buildings	16	110	Erect-A-Tube	28	128	Petersen Aluminum	32
248	Replications Unlimited	18	111	Heritage Building Systems	29	129	Replications Unlimited	32
249	S-5!	20	112	Star Building Systems	29	INTERIOR PANEL		
250	Beckers	22	113	Sukup Steel Buildings	29	130	Extrutech Plastics	32
251	Wick Buildings	23	114	Varco Pruden Buildings	30	DOORS		
252	Valspar	24	115	Web Steel Buildings Northwest, LLC	30	131	A.J. Manufacturing	32
253	North Star Metals	25	BUILDING PANELS			132	CannonBall:HNP	33
254	Schweiss Doors	26	ROOF & WALL PANEL			133	Delden Garage Doors	33
PRODUCT PROFILES:			116	A. B. Martin Roofing	30	134	Entrematic/Amarr	33
ADHESIVES, SEALANTS, CAULKS			117	American Building Components	30	135	Erect-A-Tube Inc.	34
102	Aztec Washers	27	118	BORAL	30	136	Hi-Fold Door Corporation	34
103	Dynamic Fastener	27	119	Central States Manufacturing	30	137	Janus International Group	34
104	Novagard Solutions	27	120	Classic Metal Roofing	30	138	Midland Door Solutions	34
105	Topps Products, Inc.	27						

RS #	Company	Page #
139	MWI Components.....	34
140	Plyco Corporation.....	34
141	PowerLift Hydraulic Doors.....	34
142	Safe-Way Garage Doors.....	34
143	Schweiss Doors.....	35
144	Silvercraft.....	35

DOOR HARDWARE

145	CannonBall:HNP.....	35
146	National Hardware.....	35
147	Western Products.....	35

EQUIPMENT

148	Acu-Form.....	36
149	ASC Machine Tools Inc.....	36
150	The Bradbury Company.....	36
151	Hayes International.....	36
152	Hershey's the Metal Meister.....	36
153	Marion Manufacturing.....	36
154	Metal Rollforming Systems.....	36
155	Roll Former Corporation.....	36
156	Rustgo USA.....	37
157	Semmler Systems.....	37

FALL PROTECTION

158	Fall Protection Distributors LLC.....	37
-----	---------------------------------------	----

FASTENERS/CONNECTORS

NAILS, SCREWS

159	Atlas Bolt & Screw.....	38
160	DB Building Fasteners Inc.....	38
161	Direct Metals Inc.....	38
162	Dynamic Fastener.....	39
163	East Coast Fasteners.....	39
164	FASCO America.....	39
165	Fasteners Direct LLC.....	39
166	Lakeside Construction Fasteners.....	40
167	Leland Industries.....	40
168	Levi's Building Components.....	41
169	Maze Nails.....	41
170	SFS intec.....	44
171	ST Building Fasteners.....	44
172	Triangle Fastener.....	44

ROOF CLAMPS

173	S-5!.....	44
174	SnoBlox-Snojax.....	44

FOUNDATION POSTS/PRODUCTS

175	AG-CO.....	44
176	Brut Post Grabber, The.....	44
177	Midwest Perma-Column Inc.....	45
178	Levi's Building Components.....	45
179	Planet Saver Industries.....	45
180	Plasti-Sleeve Post Protection.....	45
181	Post Protector Inc.....	46
182	Richland Laminated Columns LLC.....	46

RS #	Company	Page #
------	---------	--------

INSULATION

183	Covertech/rFoil.....	46
184	Hershey's/Hitz Halter.....	46
185	Martin Building Products.....	46
186	MWI Components.....	46
187	Plyco Corporation.....	47
188	Tape Products Company.....	47

METAL CONSTRUCTION COMPONENTS

COIL

189	Steel Dynamics.....	48
-----	---------------------	----

PAINT, COATINGS

190	AkzoNobel.....	48
191	Becker Specialty Coatings.....	48
192	Dura Coat Products.....	48
193	Valspar.....	48

METAL FORMING PRODUCTS

194	Johnson Brothers Roll Forming Co.....	48
-----	---------------------------------------	----

METAL ROOFING PRODUCTS

CUPOLAS

195	A.B. Martin Roofing.....	49
196	CannonBall:HNP.....	49
197	MWI Components.....	49
198	Plyco Corporation.....	49

RETROFIT/RECOATINGS

199	Dynamic Fastener.....	49
200	EPDM Coatings LLC.....	50
201	Nationwide Protective Coating.....	50

UNDERLAYMENT

202	MFM Building Products.....	50
-----	----------------------------	----

SNOW MANAGEMENT

203	AceClamp.....	50
204	Alpine SnowGuards.....	50
205	Dynamic Fasteners.....	50
206	Levi's Building Components.....	50
207	S-5!.....	52
208	ST Building Fasteners.....	52
209	SNOBAR.....	52
210	SnoBlox-Snojax.....	52
211	Sno Gem Inc.....	52

MOISTURE /VAPOR BARRIERS

212	FILC USA LLC.....	52
213	MFM Building Products.....	52

GUTTER PRODUCTS

214	SpoutOff Rain Gutter Company.....	53
-----	-----------------------------------	----

SOFTWARE

215	PostFrame Manager.....	53
-----	------------------------	----

TRUSSES/ TRUSS ASSEMBLY

216	Rigidply Rafters.....	53
217	Starwood Rafters.....	53

RS #	Company	Page #
------	---------	--------

VENTILATION

218	DCI Products.....	53
219	Direct Metals Inc.....	53
220	Levi's Building Components.....	53
221	Marco Industries.....	54
222	MWI Components.....	54
223	Plyco Corporation.....	54
224	Roof Saver.....	54
225	Ventco Inc.....	54

WINDOWS

226	AJ Manufacturing.....	54
227	CannonBall:HNP.....	54
228	MWI Components.....	55
229	Plyco Corporation.....	55

SKYLIGHTS, DAYLIGHTING

230	AmeriLux International.....	55
231	DayStar Systems LLC.....	55
232	Direct Metals Inc.....	58
233	Major Industries.....	58
234	MWI Components.....	58
235	Palram Americas.....	58

**REPRINT
YOUR ARTICLE
OR PROJECT**



- Brochures, mailers, show promo
- Show you are nationally recognized
- Build prestige in your brand

**FOR REPRINTS, BROCHURES
OR CATALOG PRINTING
OPTIONS, CALL OR EMAIL:**

Gary Reichert
gary.reichert@fwmedia.com
715-350-7080



SFS intec | Circle 170

SFS intec's new ConnexTite structural wood screw line is ideal for single- and multi-ply truss, column header and joist applications, providing quicker installation and lower installed costs versus carriage bolts or ring shanked nails. Featuring a large flange head and aggressive thread design ensures quick, tight connections. The ribbed point cuts through the densest lumber without splitting. They install with an impact gun and TORX bit and carry IBC 1603 approval for structural connections.

ST Building Fasteners | Circle 171

Sealtite Building Fasteners is now ST FASTENING SYSTEMS. The company supplies steel-frame and post-frame screws for agricultural, commercial, industrial, and residential metal roof applications. Product strengths are drill quality and corrosion resistance, as showcased on the Maxx Steelbinder, and the KwickSeal Wood-Binder with Micro-Bit drill point for metal-to-wood applications. This point is more consistent than the sharp point Type 17 design and will drill multiple thickness of steel, while eliminating the metal "pigtailed" that can embed themselves in the rubber washer. The ZXL WoodBinder zinc-aluminum alloy molded head and the ST-XL Wood-Binder 304 SS cap, both of which carry 40-year warranties against red rust are now standard with this new point. Solid



and vented foam closure strips, rubber pipe flashings, pancake- and wafer-head screws for standing seam roofs round out the product line.



Triangle Fastener | Circle 172

Triangle Fastener Corporation is a leading supplier of standard and specialty fasteners, tools, sealants, and accessories for the post-frame industry. Panel-Tite metal-to-wood screws are available in #9, #10, #12 and #14 diameters. Choose from carbon steel with Tri-Seal long life coating, stainless steel, or zinc or stainless steel cap head for superior corrosion protection. A large array of painted screws and rivets are stocked, or can be color matched to your exact requirements. TFC has 23 stocking locations.

ROOF CLAMPS



S-5! | Circle 173

S-5! clamps and brackets are extraordinarily versatile and allow you to attach almost anything to standing seam, exposed-fastened and corrugated metal roof profiles. Attach solar panels, snow retention, signs, light fixtures, gas piping, antennas, roof walkways, HVAC equipment, lightning protection systems, conduit, condensate lines and more—all without violating the integrity of the roof or the roof's warranties.

SnoBlox-Snojax | Circle 174

The Roof Clamp RC and RCT are universal-fit standing seam clamps featuring a single-piece aluminum body with three set screws and a top bolt. Secure snow retention bars, solar panels, satellite dishes, roof walks, signs, awnings, conduit or HVAC lines. Installation is fast and simple and will last the life of the roof. Roof Clamp RC and RCT fit nearly every standing seam in the field.

FOUNDATION PRODUCTS



AG-CO | Circle 175

FootingPad by AG-CO has been designed and engineered to replace concrete footings of equal diameter and is ICC code compliant. This lightweight product is designed to help raise decks and post-frame buildings, while reducing project time and labor costs. FootingPad, made from recycled composite material is strong and durable, easy to carry and won't crack like concrete. FootingPad comes in three sizes: 10 inches and 12 inches which can support 4 x 4 and 6 x 6 posts, and 16 inches which can support 6 x 6 posts and larger.

The Brut Post Grabber | Circle 176

Never manhandle heavy posts again. The Brut Post Grabber skid steer attachment makes easy work of post placement. This innovative attachment was designed and developed by a post-frame building contractor. The Brut solves problems of safety, physical strain and hole sloughing. And, it's made in the USA.

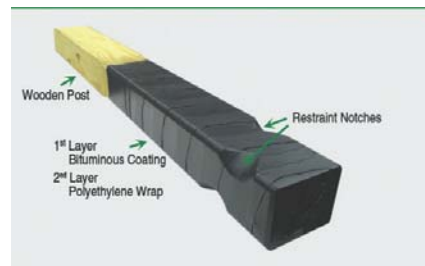


Midwest Perma-Column Inc. |

Circle 177

The Perma-Column offers the solution to wood degradation and failure in all applications where wood is used as a foundation. They come precast with the metal integrated into the concrete post and take the place of treated wood in the ground. Additional product lines are Sturdi-Wall brackets that are used on concrete stem walls and floors and come in dry- or wet-set models along with the Best Products laminated wood column with the patent pending "MEGA Spacer" for easy truss installation.

ceed the post uplift requirements for concreted posts. These inexpensive plates can be field applied with just a framing hammer, eliminating the need for extra tools and time associated with rebar and other uplift technology. They're lightweight, easy to handle and easy to install. They are low cost and stronger than rebar and protect the center of the post by eliminating exposure to the elements, thereby resisting decay.



Post double-layer wrap is factory heat-sealed to the lumber, and delivered ready to install with uplift restraint notches. When used with cement, this technique provides maximum anchorage characteristics, resisting post withdrawal generated by wind load. Green Post is non-toxic, environmentally friendly and termite tested.

Levi's Building Components |

Circle 178

Uplift Plates from Levi's Building Components are designed to help the post-frame builder save time, money and meet or ex-

Planet Saver Industries | Circle 179

Green Post is the affordable, all-in-one solution for in-ground post decay, treatment retention and uplift restraint. Green

Plasti-Sleeve Post Protection |

Circle 180

First on the market by many years, Plasti-Sleeve literally created the foundation



A. B. MARTIN
ROOFING SUPPLY, LLC

Roofing & Siding • Hardware • Lumber



Steel Soffit

Vented or Solid

- Heavy-duty 29 gauge steel.
- Available in all 25 of our standard colors.
- 12" wide coverage by 11.5" in-stock.
- Custom overhang lengths available from 1.5" to 48'.



**In-stock for
Fast Shipment Nationwide**

82 Garden Spot Rd. | Ephrata, PA 17522 | 717-445-6885
35 Ridge Rd. | Newville, PA 17241 | 717-776-5951 www.abmartin.net



Ask About
Our Fabrication
Capabilities!

"We Invest in Creating Win-Win Partnerships"



www.AmeriLuxInternational.com

AGRILITE™

- Corrugated PVC Liner Panel
- Strong, High Impact, Chemical Resistant

TRUSSCORE™

- PVC Interlocking Liner Panel
- Hygienic, Durable, Easy-to-Clean

COVERLITE®

- Corrugated Polycarbonate Sheet
- High Light Transmission, Virtually Unbreakable

THERMOCLICK™

- Interlocking Polycarbonate Sheet
- Profile Free Facades, Energy Efficient





Projects Made Easy!
Learn More. Call 888.602.4441 Order Panels Cut-to-Size

Circle Reader Service #291

Circle Reader Service #321



alternative category for post-frame construction. The clean fitting, easy-to-use, slide-on Post Protection sleeves provide the economical protection that many post-frame customers now expect. Quality black polyethylene plastic, over 20 specialized sizes, and great pricing make Plasti-Sleeve a smart choice for post protection. Market leadership has continued with Short-Sleeve, for economical grade-level post protection, and Plasti-Skirt, an easy-to-use plastic skirt board protector.



Post Protector Inc. | Circle 181

People love post-frame for speed, affordability and design flexibility. But there is one issue that gives many consumers, builders and design professionals pause when deciding if post frame is the right choice: a soil-to-wood contact foundation. It is fact that wood in soil contact is not the optimum environment for its longevity. A simple solution is Post Protector and Skirt-Board Protector “barrier” protection from Post Protector Inc. Together they effectively and affordably eliminate all soil-to-wood contact while retaining typical post-frame construction technique. Moreover, it eliminates this unfavorable

impression of wood that impairs consumer confidence and industry growth.



Richland Laminated Columns LLC | Circle 182

Richland Laminated is the manufacturer of Quality Laminated Columns and Perma Columns. Select from 3-ply 2 x 6 to 4-ply 2 x 8, treated bottom or all treated. Richland is the “One Stop Post Shop,” also selling Sturdi Wall Brackets, Post Protectors and Concrete Post Pads. Recently added is Green Posts from Planet Saver Industries. Richland Laminated has partnered with Planet Saver to be the official manufacturer and distributor for a five-state area.

INSULATION

Covertch/rFoil | Circle 183

rFoil patented technology is an effective energy barrier that can greatly reduce the transfer of radiant heat through siding or roofing. While most insulation materials rely on retarding the flow of heat through walls and ceilings, rFoil insulation works by reflecting as much as 96 percent of the radiant energy back away from its surface. This can dramatically cut energy cost in air-conditioned and non air-conditioned buildings.

Hershey’s Metal Meister/Hitz Halter Division | Circle 184

After facing much frustration in finding a below-grade insulation that is actually proven to work, the Hershberger family finally spent thousands of dollars and many hours testing in real-world applications to



discover the truth. The discovery led to inventing the most user-friendly, below-grade insulation that really does its job. Hitz Halter insulation products are made of only the highest quality virgin material, are designed with ultimate ease of use in mind, and are tested and proven in realistic applications.

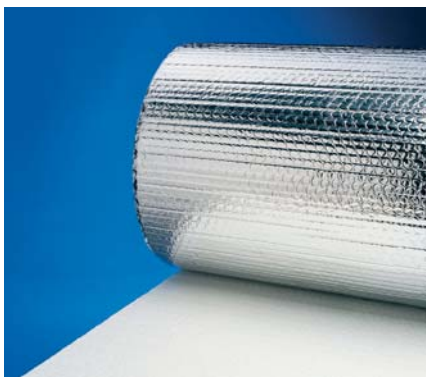


Martin Building Products | Circle 185

Martin Building Products is rolling out VerSola. This new brand of reflective insulation is produced right here in the USA at Martin’s Midwest facility and is now the company’s primary product. Industry experts were consulted to ensure the highest levels of preventative additives were included to safeguard against deterioration and degradation. Martin’s facility boasts a dedicated state-of-the-art machine to produce both 4-foot and 6-foot seamless rolls.

MWI Components | Circle 186

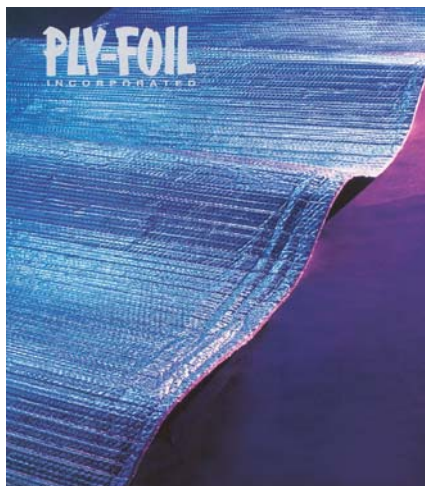
TempShield is a technologically advanced insulation material ideal for new construction or retrofit installation in residential, commercial, industrial, metal buildings and post-frame buildings. It consists of one or two layers of Barrier Bubble air cellular material laminated between layers of aluminum foil to provide



excellent thermal resistance. Offered is a Class A/Class 1 fire rating on white poly/foil insulation. It's available in standard widths of 48 inches and special order widths up to 120 inches.

Plyco Corporation | Circle 187

Ply-Foil is a multi layer, reflective insulation from Plyco, which comes in rolls consisting of a variety of widths and lengths



for use in both specialty and standard construction projects. Two outer layers of aluminum foil reflect 97 percent of the radiant heat. Each layer of foil is bonded to a tough layer of polyethylene for strength. The inner layers of bubble pack resist conductive-heat flow while a center layer

of polyethylene gives Ply-Foil additional strength. Ply-Foil provides nominal 3/16-inch thick single bubble, nominal 5/16-inch thick double bubble, standard edge and staple-tab product lines for both metal- and post-frame construction. Perfect for new construction or retrofit.

Tape Products Company | Circle 188

Tape Products Company is a national distributor for rFOIL reflective insulation. rFOIL is designed to control heat gain or loss and prevent interior condensation in all types of metal and metal-clad buildings, walls, ceilings, crawl spaces, basements, attics, duct work, between joists, under roofing substrates and under concrete. Reflective insulation reflects 97 percent radiant heat. Emseal expandable foam tape sealant and RidgeVent polyurethane foam are also available for added insulation and protection.

COLOR Snap
patent pending

Match Your Roof Color in a Snap!

ACE CLAMP

Fully assembled and ready to install. Ice clips "snap" into place - no screws. Push pins help safeguard panel finish.

www.AceClamp.com

Circle Reader Service #421

MRS
METAL ROLLFORMING SYSTEMS

The Affordable Rollforming Equipment Manufacturer

Metal Rollforming Systems designs and manufactures reliable and affordable rollforming equipment and accessories, making us a leader in rollforming equipment manufacturing. Our unsurpassed technical support is unlike any other in the industry, we work until the job is done. Our customer's success is our success. For more information, please contact us at 1.888.284.6794 or visit us online.

- Single & Double Deck Rollformers
- Trim Rollformers
- *NEW* Patriot Rollforming Line
- Coil Reels
- Precision Cut Slitting Lines
- Sheet Stackers
- Coil Upenders
- Ridge-Cap Press

1.888.284.6794 www.mrsrollform.com

Circle Reader Service #584

METAL CONSTRUCTION COMPONENTS

COIL

Steel Dynamics | Circle 189

Steel Dynamics is the only domestic steel company to have contiguous paint lines at steel production locations, offering painted steels directly to the customer. As a result of its supply chain efficiency, SDI's customers benefit from significantly reduced costs related to logistics, administrative management, coil yield, inventory, warranty claims and working capital. It offers the extraordinary peace of mind of one-stop shopping. Paint lines have been added at the facilities in Butler, Indiana, Jeffersonville, Indiana and Columbus, Mississippi.

PAINT, COATINGS



AkzoNobel | Circle 190

AkzoNobel manufactures high performance coil coatings for use in commercial, agricultural, architectural and residential markets. Products include Trinar, a 70 percent PVDF coating, and Ceram-A-Star 1050, industry-leading silicone-modified polyester. Both are available in a variety of standard colors, or can be specialized with a variety of innovative colors, prints and finishes. In addition, each has a large selection of Cool Chemistry formulations which help make projects more energy efficient and sustainable.

Becker Specialty Coatings | Circle 191

BeckryTex technology allows you to design unique and distinctive exterior textured finishes. BeckryTex is a warrantied,



highly durable, polyester, architectural coating system, most often used on roofing for a well-defined wrinkled look that creates the appearance of materials other than metal. A wide range of popular colors are available in this weather-resistant product.



Dura Coat Products | Circle 192

Dura Coat Products offers two high-performance coil coatings. Durapon 70 is a PVDF formulation with exceptional durability and fade resistance that is also available with thick film primer for tougher environments. Ceranamel XT40 SMP is a polymer that is harder, yet more flexible than ordinary coatings. Both are Energy Star compliant.

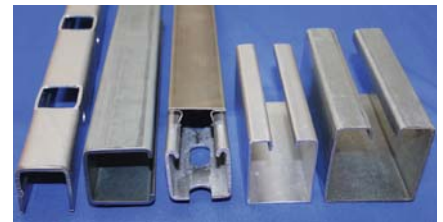
Valspar | Circle 193

Valspar, a brand of Sherwin-Williams Coil Coatings, offers a full range of high-performance architectural metal coatings in PVDF, SMP and polyester formulas. They are available in a full palette of colors and



surface textures. Fluropon is Valspar's flagship coating, containing 70 percent PVDF resins, and offering premium protection against harmful UV rays, chalk, fade and chemical degradation. WeatherXL, the next generation enhanced silicone polyester coating, offers protection against weathering to ensure that your design lasts for years to come. Valspar's WeatherXL Crinkle Finish coating offers a unique textured appearance. Each coating is extremely durable and have excellent film integrity and adhesion properties.

METAL FORMING PRODUCTS



Johnson Brothers Roll Forming Co. | Circle 194

Products for many different industries include: U-channels, C-channels, J-channels, hat channels, box channels, strut channels, profiles, mouldings, shapes, zees, angle: equal and unequal legs, railings, rails, framing, frames, tracks, stiffeners, sill track caps, flashings, slides, slats, louvers, strips, trim, tubing; open seam, loc seam, split seam, hemmed seam, finned seam and flanged steam in standard and special shapes.

METAL ROOFING PRODUCTS

CUPOLAS



A.B. Martin Roofing | Circle 195

Pre-assembled custom cupolas from A.B. Martin save you time and hassle. They come in four standard sizes made-to-order for any roof slope or color combination. Best of all, you'll save hours on the job because ABMartin Cupolas come pre-assembled. The 48 inch cupolas come fully assembled while the 16 inch, 24 inch, and 36 inch cupolas come pre-assembled in two pieces (cupola and base) that only need to be fastened with four screws on each side.

CannonBall:HNP | Circle 196

The elegant, traditional finishing touch on your post-frame building, Cannon-

Ball's cupolas provide ventilation as well. CannonBall cupolas are built to last, assembling easily with a unique interlocking system and a formed, stamped roof spine rounded for safety. Available in many colors, the 24-inch and 36-inch models are shipped assembled, or knocked down—while the 48-inch model ships assembled in a crate, ready for installation.



MWI Components | Circle 197

Top 10 award-winning MWI manufactured cupolas offer the perfect decoration for any post-frame project. MWI offers 24-, 36-, 48- and 66-inch choices in its four-sided design. The company also offers an eight-sided octagon design that stands 7- or 12-feet tall. In addition to the vast color selection, customers have the option of specifying their cupolas with louvers or windows.



Plyco Corporation | Circle 198

Curved roof, straight roof, window kit options, premium base and more, Plyco has the cupola to add that finishing touch to your building projects. Available in 24-, 36- and 48-inch sizes, they assemble on the job site in minutes with slide-on metal connectors. Plyco cupolas can be color matched to most roll-formed steel colors. Top it off with one of several available weather vane options.

RETROFIT/RECOATINGS

Dynamic Fastener | Circle 199

Drop-Stop sealer from Dynamic FASTER was specifically designed for application to metal roofs and problem areas such as gutters, expansion joints, etc. Drop-Stop can easily be applied over sloped contoured surfaces and will give long lasting, colorful protection. Made from select synthetic rubbers, Drop-Stop is applied effortlessly as heavy-bodied paints. This unique material actually stretches and recovers to bridge roof joints in which thermal movement can be expected. With

BOX TRACK YOU'RE ON THE RIGHT TRACK WITH **WESTERN**

CALL US WITH YOUR REQUIREMENTS TODAY. WE'LL HELP YOU BUILD THE FUTURE.

(800) 553-5142 www.westernproductsinc.com

WESTERN PRODUCTS OF INDIANA

ALSO FROM WESTERN: 1 1/2" + 3 1/2" SLIDING ALUMINUM DOOR FRAMES

Circle Reader Service #374

1600 PSI tensile and 600 percent elongation capabilities, Drop-Stop can single-handedly tackle most metal repairs.

EPDM Coatings LLC | Circle 200

Fix roof leaks once with the only liquid version of EPDM rubber in the world. It's made in the USA with a 25 year history of proven success. This one coat application extends your roof another 18 to 20 years. It withstands ponding water 365 days a year and waterproofs immediately upon application.

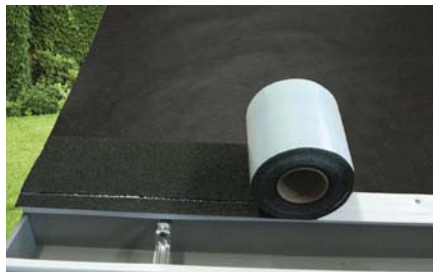
Nationwide Protective Coating | Circle 201

PermaGard is a bright white, elastomeric waterproofing acrylic, insulating ceramic, Protective Energy Star roof coating. It is designed as an energy-saving high-reflectivity roof



coating that protects and extends the life of most any metal or other sloped roofing surface. It has a high-build formula that possesses waterproofing, insulating and soundproofing properties that beautifies and protects. Most any color is available. PermaGard offers a 15 year warranty and is one of more than 100 quality products manufactured by Nationwide Protective Coating Mfrs. Inc. of Sarasota, Florida.

UNDERLAYMENT



MFM Building Products | Circle 202

Founded in 1961, MFM Building Products has been a leading manufacturer in exterior, self-adhering waterproofing

membranes for the construction industry. For the metal roofing contractor, it offers three high-temperature-rated underlayments: Ultra HT Wind & Water Seal, MFM Wind & Water Seal and StormStopper FSU. Each is designed to withstand the high heat generated by metal roofing systems to ensure a complete waterproofing barrier against the elements. Contact MFM to see which underlayment best suits your project requirements.

SNOW MANAGEMENT



AceClamp | Circle 203

AceClamp has made installing snow retention systems on standing seam metal roofs quick and easy with Color Snap. It begins with installation of AceClamp's fully assembled, non-penetrating fasteners on the SSMR ribs. The extruded Color Snap bar is then set below the fasteners and snapped into place. Bolts on the clips that hold the bar in place are tightened to complete the install. Finally, a color-matching, 2-inch-wide metal strip is inserted into the bar's front-facing groove, blending the entire rail system into the color scheme of the roof. Unique to this system is the ice clips that also accepts a 2-inch wide color strip, snapping into the rail without screws or hardware.

Alpine SnowGuards | Circle 204

Alpine SnowGuards designs, engineers, and manufactures snow management systems from facilities in Morrisville, Vermont. It works closely with leading roofing contractors, architects, engineering firms, developers, and roofing manufacturers to ensure delivery of quality prod-

ucts that do what the company says they will do. Alpine SnowGuards can help a building qualify for LEED credits.

Dynamic Fasteners | Circle 205

Dynamic Fastener's Dyna-Guard snow retention system for standing seam roof systems is an 8 foot long extruded aluminum stick with a T-shape profile. Dyna-Guard is installed by attaching clamps or brackets to a metal roof and bolting the system to the clamps or brackets. Seven Dyna-Clamps with round point set screws and two models of Sno-Dams are offered. Sno-Dams attach to the back of Dyna-Guard and inhibit snow and ice from sliding under it. A 2-inch-wide painted strip of metal roof material is inserted in Dyna-Guard for aesthetics.



Levi's Building Components | Circle 206

Levi's Snow Defender 4500 answers your snow retention needs with high quality and good looks. Made of 16 gauge 304 Stainless Steel, it is designed for performance and long-life. Utilizing the highest quality powder coating process, the 4500 is available in more than 40 colors, matching most metal roofing manufacturer's colors. Backed by the product-specific Snow Defender Calculator, to ensure proper placement for best performance, the 4500 is your best choice for snow retention.



KNOW A CREW FOREMAN WHO DESERVES RECOGNITION?

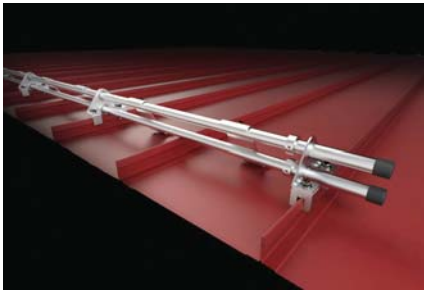
NFBA members can nominate their most loyal and hard-working project leaders for the **Crew Foreman of the Month award**, which includes a cash prize and a *Frame Building News* article featuring the winner.

All monthly winners are automatically nominated for the prestigious Crew Foreman of the Year award, which is presented at the annual Frame Building Expo Awards Luncheon and comes with an even larger cash prize!

Learn more at nfba.org/awards

The Crew Foreman of the Month and Crew Foreman of the Year awards are sponsored by American Building Components.





S-5! | Circle 207

Lab testing and heavy-duty applications prove that S-5! snow retention innovations are top-of-the-class. ColorGard has been outperforming all other systems for two decades and ensures a perfect color-match for the life of the roof, while the X-Gard provides unprecedented holding strength and versatility, enabling a reliable solution in even extreme circumstances. The new DualGard snow retention system from S-5! uses two 1-inch pipes to keep snow and ice in place while it melts safely. Designed to preserve the coveted look of the metal roof, DualGard can be painted, powder coated or anodized to match virtually any metal roofing system. Mounted with S-5! mini clamps, this versatile system comes with two sizes of snow clips for every roof type and can fit virtually any seam profile.



ST Building Fasteners | Circle 208

ST Building Fasteners offers Snow Trax snow retention guards for exposed fastener roofs and the MRC Snow Trax roof clamp for standing seam roofs. The Snow Trax is 16 gauge 304 stainless steel available in more than 20 powder coated colors. Its adhered rubber gasket eliminates the need for additional sealant. The MRC is extruded aluminum, and a colored rail slides through the clamp grooves to provide maximum protection from snow and ice.



SNOBAR | Circle 209

SnoBar and ColorBar systems allow for snow retention on standing seam roofs without having to penetrate the panels. The bars are made in the USA from galvanized, aluminum, or stainless steel. The standard clamp is also made of stainless steel, the only one in the industry. It is easy to install with basic tools and backed by a lifetime manufacturer's warranty.



SnoBlox-Snojax | Circle 210

SnoBlox-Snojax offers a variety of snow retention systems for most metal roof applications. Every product is professionally tested, American made, and most ship the same day. Choose from a variety of mounting options including adhesive attachment, mechanical fastening and non-penetrating clamp attachment. Products are backed with lifetime warranties and free system design services are available.

Sno Gem Inc. | Circle 211

The 1-inch bar Sno Blockade is one of the flagship snow retention systems in Sno Gem's line of products. The Sno Blockade system is available in standard mill finish aluminum or painted in either a powder coating or Kynar finish. It is easy to install with few required components, regardless of whether installed on a new or existing standing seam metal roof system. The Sno



Blockade is derived from the unique design of the patent-pending WaveLock Technology which is designed to maximize strength, but not to pierce or penetrate the roof panel. Additional details, engineered layouts (if desired), technical questions and estimates are available online.

MOISTURE /VAPOR BARRIERS

FILC USA LLC | Circle 212

Dripstop from FILC USA helps fight condensation without insulation. Dripstop has specially-designed pockets that store condensation as it forms and holds it until conditions change and it evaporates back into humidity. It arrives at the job site already on the steel, so there are no costs for installing insulation. Dripstop also saves time by removing one step of the building process and helps prolong the life of your building by adding another layer of protection from the corrosive elements found in animal confinement.



MFM Building Products | Circle 213

Founded in 1961, MFM Building Products has been a leading manufacturer in ex-

terior, self-adhering waterproofing membranes for the construction industry. An important consideration in any building project is the selection of effective waterproofing and weather barriers. MFM offers a complete “envelope” of waterproofing solutions from the rooftop to the foundation that include low-slope roofing membranes, roofing underlaments, window flashing tapes, above- and below-grade waterproofing membranes and specialized construction/roofing tapes.

GUTTER PRODUCTS



Rain Gutter Company | Circle 214

The SpoutOff Rain Gutter System is comprised of a group of four powder-coated 0.040 aluminum parts that increase the size of all rain gutter outlets four times so they will not clog. It has downspout supports designed to enable any homeowner or building owner to remove a 1, 2 or 3-story downspout to easily, quickly, safely and inexpensively check the outlet and downspout while standing safely on the ground.

SOFTWARE

PostFrame Manager | Circle 215

PFM is the most powerful takeoff and estimating system for post-frame and stud-wall buildings ever created. It is also a sales tool, allowing users to create any building and give customers a 3D tour in minutes. PFM produces customer quotes, supplier PO's, construction drawings and layouts, things engineers need to stamp prints. A free trial download is available.

TRUSSES/ TRUSS ASSEMBLY



Rigidply Rafters | Circle 216

Rigidply Rafters has improved the quality of post-frame buildings by manufacturing and distributing the original 100 percent glue-laminated post. Not only are Rigidply GluLam posts lighter, straighter and stronger than solid sawn posts, but they minimize cracking and splitting.



Starwood Rafters | Circle 217

Starwood Rafters manufactures the LamPly truss which is made with a center plywood webbing and laminated to dimension lumber and glu-lams. It is made in a gable style truss and also a mono slope and gambrel style. Starwood also manufactures gothic style rafters.

VENTILATION

DCI Products | Circle 218

CedarVent/CedarVent Plus by DCI Products are the products of choice for builders and contractors looking to create ventilation behind any wall/siding/roofing material. CedarVent performs great venting and allows drainage behind cedar shakes/shingles, but these rigid, non-compressive strip vents can be used for



fiber-cement siding, asphalt shingles, as well as cedar. CedarVent Plus has a bug-screen for use around the perimeter and provides a quality and easy-to-install solution for preventing premature deterioration, condensation, moisture and mold.

Direct Metals Inc. | Circle 219

The home of Razorback RidgeVent, Direct Metals Inc. offers choices in ventilation systems for metal roofing panels and post-frame buildings. Universal foam products such as Razorback RidgeVent and Razorback Prime complement DMI's profiled product offerings such as ProfileVent.



Levi's Building Components | Circle 220

Levi's offers simple solutions to prevent weather element damage for varying roof profiles with FastVent Plus and FloVent—two contractor-friendly metal roofing ridge vent closure systems. Both are easy to install with a pre-applied adhesive strip and are fire retardant and UV stable. Each fit many profiles: FloVent can be installed on the ridge cap and FastVent Plus on the eave.



Marco Industries | Circle 221

Marco Weather-Tite System solutions, including roof ventilation and accessory products, are tailored to fit your specific performance requirements and budget. Marco ventilation products are made with superior material that outlasts and outperforms competing polyurethane-material products. An exclusive non-woven polyester material means Marco ventilation products deliver long-lasting resiliency and they breathe, which helps prevent moisture absorption.



MWI Components | Circle 222

Not only does MWI supply Uni-Vent II and Uni-Vent III to ventilate with a ridge cap, but it also manufactures five profiles of Ridg-Vents. Ridg-Vents exhaust air out of an attic or whole building. When used in conjunction with vented soffit, Ridg-Vents provide superior ventilation. Customers also have the option of choosing a fiberglass diverter on some models to allow natural light into a structure. With more than 100 colors to choose from, MWI can match most manufacturers' steel colors.

Plyco Corporation | Circle 223

Plyco manufactures and distributes a variety of ventilation products designed to meet most airflow requirements. The MWE-100 is a low profile unit, 10 feet in length with 12 square inches of free air



space per linear foot. The MW100-25 has a higher profile than the MWE and is open at the top. The ventilator has an internal diverter to direct rain off to the side and out onto the roof. The free air space per linear foot is 30 square inches and it is 10 feet long. The MW100-35 has the same design as the 25 series with increased free air space of 36 square inches per linear foot. The ventilator rises 4 inches above the ridge and comes 10 feet in length. The FMW100-35 is of the same design as the 35 series but the diverter is made from translucent fiberglass. Having the translucent fiberglass diverter allows light into the building ridge while keeping the rain out.

Roof Saver | Circle 224

Roof Saver ridge vent is cost-effective attic ventilation that provides a superior appearance for any home. It is independently tested and evaluated to exceed the attic ventilation requirements of all nationally-recognized building codes, holds a Miami-Dade County NOA, a Class A Fire Rating and provides uniform ventilation to relieve excess heat and moisture as part of an attic ventilation system. It's available in four widths with coil or hand nails, all with a 40 year warranty.

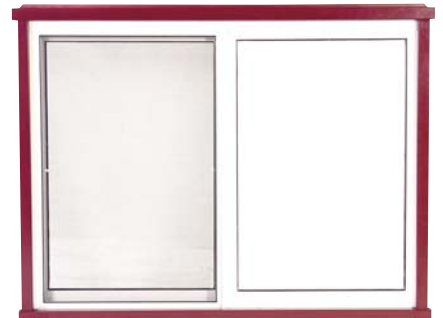
Ventco Inc. | Circle 225

ProfileVent is custom cut to fit the individual panel profile. ProfileVent's compatibility with a steep roof pitch makes it uniquely suitable for these applications, without sacrificing ventilation performance. It is Class A fire rated and has



proven performance for more than 20 years. It is available in cut-to-fit for standing seam and screw-down panels and in more than 40 profiles for commercial, agricultural and residential metal roofs. ProfileVent is available through SFS Intec Inc.

WINDOWS



AJ Manufacturing | Circle 226

AJ Manufacturing offers a complete line of durable high quality aluminum and vinyl windows. Options include horizontal sliding, fixed lite, casement, single hung, double hung, thermal, non-thermal, grids and low-E glass. Transom windows and mullion kits to combine multiple windows create attractive architectural features. White, brown, bronze, clay or custom colored shutters, windows and trim will enhance the appearance of your next building.

CannonBall:HNP | Circle 227

CannonBall offers a variety of window applications for agriculture, commercial and metal building markets. The premium Impervia window from Pella Corporation offers pultruded fiberglass composite construction, powder-coat color finishes and options like Energy Star/foam-insulated frames. Thermally-

broken 2200-Series aluminum windows hold off winter's cold and are available in slider, hung, fixed and architectural shapes. Value models can be found in the 1200-Series welded vinyl construction and wide assortment of horizontal sliding, single hung, 3-lite slider, fixed and architectural shape configurations.



MWI Components | Circle 228

MWI Components is now offering a simple and strategic line of vinyl windows for the post-frame industry. It includes single hung and horizontal sliders with 1/2-inch insulated glass, removable insect screens, durable, completely-welded construction, UV-stable white vinyl, cast/zinc painted window locks, continuous spacer primary seal, interior weeping system and deluxe wool-pile seals. The single-hung option offers choice of with or without grids; the horizontal slider offers the option of with or without a built-in J-channel.

Plyco Corporation | Circle 229

The CTB (Commercial Thermal Break) window is Plyco's top-of-the-line commercial quality window. It is constructed of 100 percent thermalized aluminum extrusions with 5/8-inch thermo pane glazing. Plyco also offers AATL (All Aluminum Trimline) windows, an aluminum frame

window specifically designed for the metal-clad building industry. The Andersen 100 Series energy efficient window is made of "Fibrex," a revolutionary composite material with strength, aesthetic appeal and energy efficiency (Energy Star). The Andersen 100 Series window is recommended for post-frame residential and high-moisture building applications. Unlike vinyl, the Andersen 100 Series window can be painted and holds its form without warping or twisting.

SKYLIGHTS, DAYLIGHTING



AmeriLux International | Circle 230

Available in clear, bronze, opal and soft-lite, Lexan Greca polycarbonate sheet is perfect for skylight or sidelite applications. This corrugated sheet features a square-wave profile and has a high resistance to the harmful effects of weath-

er: both in impact strength to resist hail damage and UV protection. Lexan Greca polycarbonate corrugated sheet is a cost-effective way of incorporating daylighting into low-rise commercial buildings and agricultural structures, allowing natural lighting in while keeping nature's elements out.



DayStar Systems LLC | Circle 231

Utilizing unique technology, DayStar developed a completely natural lighting system for commercial applications, such as clinics, municipal buildings, schools, hangars, big box retail stores, manufacturing plants and warehouses. Directed through an ultra-reflective shaft, natural light is amplified and dispersed evenly, regardless of the size of the building, even on cloudy days. With more uniform diffusion, no glare and hot spots, DayStar's system also extends the amount of hours electric lights can be turned off, up to 9-1/2 hours per day, maximizing energy savings. Aesthetically appealing in open environments, the super-insulated light shaft requires no attic support walls and is available in custom lengths. DayStar's complete system includes: dome, light shaft, insulated steel or aluminum roof curb to match your roof pitch and rib design, and ceiling lens. All units are powder coated to match your roof color.


classified ads

CALL 800-726-9966

160 DOORS & WINDOWS

SCHWEISS THE DOOR LEADER

DOORS



HYDRAULIC -OR- BIFOLD
ONE-PIECE DOORS STRAP LIFT DOORS

507-426-8273

• AVIATION • SHOP DOORS

SCHWEISSDOORS.COM 507-426-8273

250 MISCELLANEOUS

Wall and Ceiling Panels and FORMS

Call TODAY for Details!

- Sanitary - Smooth
- Non-Porous
- Easy to Clean
- Perfect for Non-Food Contact Surfaces
- For Corrosive or High-Moisture Areas
- Made in the USA

HOLY COW!
These panels are bright!

View our New FORM Panel video on our website

888-818-0118

www.eplastics.com
email: info@eplastics.com

EXTRUTECH PLASTICS, INC.

400 ROLL FORMERS

Acu-Form

ROLL FORMING EQUIPMENT

- Ag Panel
- Post Cut Shear
- Pre Cut Shear
- Uncoiler
- Slitter
- Hemmer
- Trim Rollformer
- Wrapper
- Upender
- Perforator

We use D2 tool steel as a standard.

Phone (330) 674-4003 Fax (330) 674-4035



BRADBURY
THE BRADBURY CO., INC.

We Build Machines... We Sell Solutions

Panel Lines	Ridge Cap Benders
Standing Seam Lines	Insulated Panel Lines
Control Retrofits	Portable Roll Formers
Trim Roll Formers	Hemming Roll Formers
Hydraulic Folders	Slit & Recoil Lines
Garage Door Lines	Purlin Lines

620.345.6394 www.bradburygroup.com

600 TOOLS/EQUIP DISTRIBUTOR

MARION MANUFACTURING

- Automation Systems
- Metal Construction Rollformers
- Coil Processing
- Forming & Fabrication
- Recondition Existing Machines

WE ADD THE VALUE TO METAL

1-888-865-8740 www.marionmanufacturing.com

600 TOOLS/EQUIP DISTRIBUTOR

Make Your Own Nail-Lam Column



BIG RED III
Total Fabricating System **Your One Stop Shop**

Ph: 605-787-4765
jimsemmler1@msn.com
www.semmlerinc.com

See In Motion
www.semmlerinc.com/vid.php

Clark Industries, Inc.
Since 1967 - Monett, Missouri



Considering equipment?
Consider Clark.

- Roof & Floor Truss Presses
- Multi-Head Truss Presses
- Modular Truss Presses
- Shuttle Presses
- Jack Presses
- H.D. Chord Splicers
- Post & Column Machines
- Floor Truss Machines
- Electric Horizontal Stackers
- Electric Peak-up Stackers
- Conveyor Systems
- Custom Machinery

Call us toll free at: 800.743.9727
or visit us on the web at: www.clark-ind.com

600 TOOLS/EQUIP DISTRIBUTOR

MISS AN ISSUE?



Back issues of *Rural Builder* are now available for **free download**.
Go to: www.ConstructionMagNet.com/download-free-back-issues.

ADVERTISE HERE!

CONTACT GARY REICHERT
P: 715.350.7080 E: GARY.REICHERT@FWMEDIA.COM



Find all your building products today!



SILVERCRAFT LLC

- Dutch Doors
- Sliding Doors
- All Aluminum
- Fully Welded
- Powder Coated
- Pre-Assembled

Phone: (574) 825-8757
glsilvercraft@safecommail.com

CRS #567

Estimation Software for Roofing and Cladding
The most advanced estimating software in the world today!

Now with direct output to your rollformer



www.applicad-usa.com

AppliCad

More quotes = More sales
100% accuracy = More income
Professional 3D graphical proposals

Full take-off and material cut-lists
Metal, Tile, Shingles, Trim and Gutters
Software that Works!

FREE software trial, visit www.applicad.com

CRS #303




ATLAS
FASTENERS FOR CONSTRUCTION

"We protect value by securing metal to wood"

800.321.6977 • www.atlasfasteners.com

CRS #328



BUILT FOR POST FRAME

1015 32nd Ave West • Spencer, IA 51301
800-360-6467 • FAX 800-361-3452
www.mwicomponents.com

CRS #308



VAP CONSTRUCTION Inc.
Steel Frame & Post Frame Buildings

Vap Construction inc.
The Strongest Name in Steel Frame and Post Frame Buildings

866.492.1978
www.vapconstruction.com

Also follow us on:   

CRS #468



Thermal Building Concepts

Thermal 3Ht's unique combination of components creates a high-performance insulation. To properly insulate any building structure, you must use an insulation that controls all three forms of heat transfer and can perform in any climate zone. Thermal Building Concepts provides education and training.

"Real World Results"

102 1st Ave. W, Cresco, IA 52136
563.203.8056
www.insulation3ht.com

CRS #411

FEATURE YOUR BUSINESS HERE! CONTACT GARY REICHERT
p: 715.350.7080 e: Gary.Reichert@fwmedia.com



SteelBinder
MOLDED STRONG

IN THE USA


www.fastening-systems.com

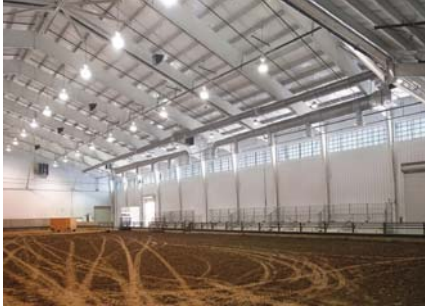
CRS #429

products

WINDOWS (SKYLIGHTS & DAYLIGHTING)

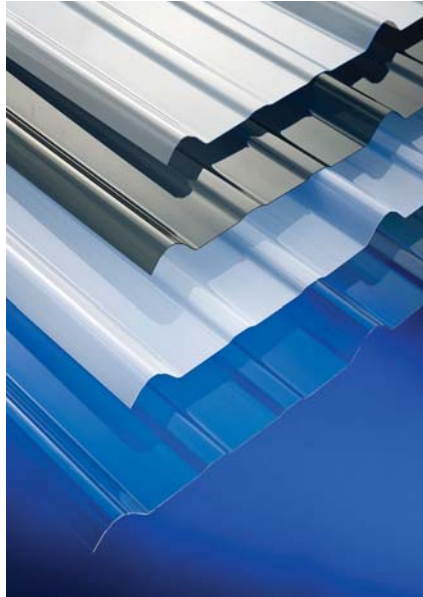
Direct Metals Inc. | Circle 232

DMI offers a full line of daylighting/metal building skylights. Its line of 1.0mm and 1.5mm thick translucent polycarbonate panels are built for strength and longevity. DMI also offers a full line of vinyl windows that are approved for use in all 50 states.



Major Industries | Circle 233

Major manufactures a wide range of skylights, canopies and wall systems, from complex custom designs to pre-assembled options for all types of budgets. Choose from lightweight translucent panel and multi-wall polycarbonate systems that diffuse light, to more traditional glass skylights and mixed glazed systems.



MWI Components | Circle 234

MWI Components stocks high-quality corrugated polycarbonate sheets, characterized by their high impact resistance, available in many profiles and lengths. MWI Components is now offering polycarbonate in two new colors: natural white and solar gray in addition to clear and opal. The natural white has 85 percent light transmission vs. 90 percent for

clear and offers soft/diffused light that creates a more comfortable work environment. Polycarbonate is available in 9-inch o.c. profiles. Opal and clear are offered in an R-panel profile.



Palram Americas | Circle 235

Palram Americas, a leading manufacturer of PVC and polycarbonate panels, offers clear or white diffused Sunsky polycarbonate panels for daylighting applications in the barn, lowering the artificial lighting needs while providing light transmission without harmful UV rays for the horses. Palram's proprietary MetalMatch technology allows for the exact matching of most through-fastened metal panels on the market.

NFBA Post-Frame Weekly

The e-Newsletter exclusively about post-frame construction

- Project features
- Technical articles
- Industry news
- How-to's and best practices
- Marketing ideas, and more

Sign up today for **FREE!**



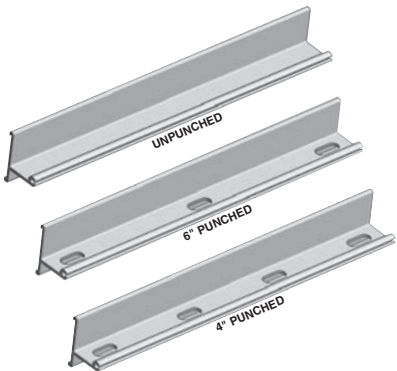
www.constructionmagnet.com/sign-nfba-newsletter

DYNA-GUARD®



IT IS TIME FOR A **CHANGING OF THE GUARD**

DYNA-GUARD® snow retention system is designed to be installed on metal roofs. We are discontinuing the line of S-5!®/COLORGARD® and related products. Please call for our close-out prices on S-5!®



DYNA-GUARD is an 8' long extruded aluminum stick with a T-shaped profile stocked in: unpunched, 4" and 6" center punched. . . **AN EXCLUSIVE DYNA-GUARD ADVANTAGE!**



SNO-DAMS® inhibit the ability of snow and ice to slide under the installed DYNA-GUARD.



DYNA-GUARD® Snow Retention System installed on a metal roof.



DYNA-CLAMPS® are non-ferrous non-piercing clamps for various attachments to standing seam metal roofs.

- 1) DYNA-CLAMPS have undergone extensive testing by the esteemed Encon Technology, Tulsa, OK.
- 2) All DYNA-GUARD, DYNA-CLAMP and SNO-DAM items are extruded from aircraft quality, high tensile aluminum "6005A T61 Aluminum".
- 3) All of these components are proudly manufactured in the U.S.A.
- 4) Over the last 15 years, our factory has produced over **5 million pounds** of aluminum snow retention components for metal roofs.

Therefore, when you buy from us, you know that you are purchasing the highest quality parts manufactured by a proven veteran at supplying high quality snow retention components to our metal roof industry. Since we have a mutually exclusive relationship with our factory, you must purchase DYNA-GUARD and DYNA-CLAMPS to know that you're receiving the *true* time-tested results/benefits of dealing with our high quality factory.

We are factory-direct on all of these components. Therefore, our valuable contractor customers benefit by paying substantially lower prices. Our valuable O.E.M. customers benefit by eliminating minimum order quantities and by eliminating any lead-time – which can stretch out to unacceptable lengths of 4 or even up to 6 weeks with some of our competitors. O.E.M.'s; our huge inventory levels will translate into less of your cash tied up in your inventory and typically completely eliminate the frustration of dealing with needed items that are on backorder.

DYNAMIC FASTENER • 800-821-5448

S-5! and ColorGard are registered trademarks of Metal Roof Innovations Ltd. DYNA-GUARD, DYNA-CLAMP and SNO-DAM are registered trademarks of Dynamic Fastener Service Inc.

WHO HAS THE THREE NEWEST PAINT LINES IN NORTH AMERICA?

STEEL DYNAMICS.

With the newest addition to the family, in the heart of the South, in Columbus, Mississippi, our reach even extends into Mexico. We now offer the widest, 72+ inches, painted steel sheet available in North America. With an already highly experienced team and this new state-of-the-art facility, you can improve *and* simplify your supply chain.

Find out how Steel Dynamics can help you achieve a best-in-show finish for your painted steel needs.

Call us today to see us earn our colors at Columbus.



Columbus Division

1945 Airport Road
Columbus, Mississippi 39703
(866) 369-3047

Butler Division

4500 County Road 59
Butler, Indiana 46721
(800) 799-8942

5134 Loop Road
Jeffersonville, Indiana 47130
(812) 218-1490

 **Steel Dynamics, Inc.**[®]
Flat Roll Group

steeldynamics.com